



How many V does a 5000w solar inverter start





Overview

Four 12 V batteries in series give 48 V. Info: Check the inverter's manual first—some 5000 W units accept 24 V or 48 V, but never both at once. Lead-acid costs less up-front, weighs a ton, and dislikes deep discharge. Large inverters are used as emergency power backup, so determine how many hours the system will run. The. A 5000w inverter is an electrical device that converts direct current (DC) from a battery or solar system into alternating current (AC), which is what most household appliances use. Whether it's. For 240V split-phase you need a second inverter or a step up transformer or an autotransformer. There have been discussions of safety concerns with the use of auto-transformers on US split-phase systems. The watts requirement of each household appliance should be calculated before you connect them to the battery. You can run Microwave, Coffee maker, refrigerator, toaster, computer, TV, Stereo, and Heater, etc. 3-in-1 Integrated Design: By combining an inverter, MPPT solar charge controller, and AC. A simple rule of thumb says you'll want around 400–500 Ah at 48 V (\approx 20–24 kWh) to deliver one full hour of continuous output from a 5000 watt inverter —then scale up from there based on how long you need the power to flow. In the next few minutes we'll break down battery math, demystify volts and.



How many V does a 5000w solar inverter start



[How Many 12v Batteries for 5000 Watt Inverter - MWXNE POWER](#)

Obviously, a 12V battery is not enough to continuously power a 5000W inverter. Therefore, you need multiple batteries in parallel or series to meet the power requirements of the ...

[How Many Batteries Do I Need for a 5000W Inverter](#)

A 5000W inverter requires at least one 450-500ah 12V battery or two 210ah 12V batteries to run for 30-45 minutes. A 750ah 12V battery is needed to run the inverter for 1 hour.



[5000W Inverter Batteries Requirements and Capacity](#)

This guide will walk you through the calculations to build a reliable battery bank, explain what a 5000W inverter will run, and determine number of solar panels you can connect to.

[What Size Battery Is Required for a 5000 Watt Inverter?](#)

Four 12 V batteries in series give 48 V. Easy math, safer setup. Info: Check the inverter's manual first--some 5000 W units accept 24 V or 48 V, but never both at once.



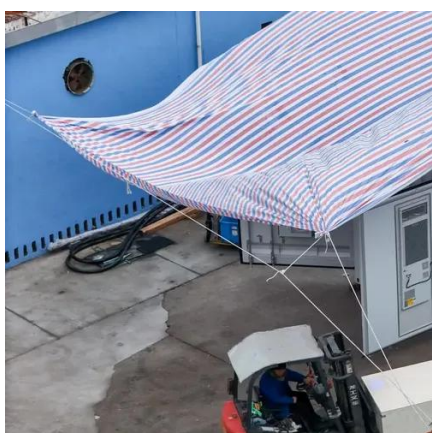
The Ultimate Guide to Choosing and Using a 5000W Inverter for Your ...

A solar and power inverter like a 5000W model typically works best with higher-voltage systems (48V), as they reduce current and improve overall efficiency. Your solar panel array should ...



Eco-worthy 5000w 48v inverter

ECO-WORTHY 5000W Solar Hybrid Inverter Charger supports up to 6 units (30kw Max.) in parallel. It's capable of single-phase or split-phase parallel. that means, it can output 110V and ...



[What will a 5000W Inverter Run? Heavy Load](#)

The 5000 watts of inverters would produce 5kW per hour voltage to power the equipment. The energy is sufficient to power several high-end household appliances at the same time.

[Vatrer 5000W Pure Sine Wave Inverter , 48V Solar Power](#)



With a wide MPPT tracking range from 60V to 150V DC and a maximum solar input power of 5000W, the inverter is able to capture solar energy efficiently throughout the day.



[How Many Batteries for 5000 Watt Inverter?](#)

To power a 5000 watts inverter independently and get the appropriate number of batteries, you need to calculate the battery capacity needed, how long you use the inverter and know ...

Best 5000W Solar Power Inverters for Reliable Off-Grid and Vehicle Use

The PowMr 5000W Solar Inverter is a sophisticated pure sine wave inverter that converts 48V DC to 120V AC with a maximum output of 5000W and peak power of 5500W.





Contact Us

For catalog requests, pricing, or partnerships, please visit:

<https://www.iwap.com.pl>

Phone: +34 919 456 782

Email: info@iwap.com.pl

Scan the QR code to access our WhatsApp.

