



How many panels are installed on the solar roof





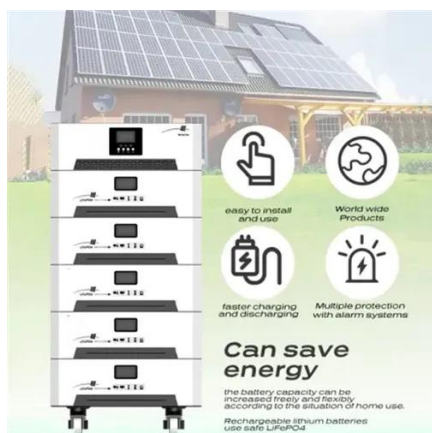
Overview

Available roof space for solar panels determines the maximum number of panels your home can accommodate. What Does a Roof Solar Calculator Do?

This type of calculator estimates how many. The physical limit of how many solar panels can be installed on a roof is a fundamental question for homeowners considering a photovoltaic system. It calculates the maximum number of panels that fit on the available roof surface, taking into account important factors such as orientation, inclination. Determine optimal solar panel size for your energy needs and available roof space. Enter your monthly electricity consumption and location details to calculate required solar panel system size. A professional site assessment.



How many panels are installed on the solar roof



Solar Panels for Roofs

Solar Panels for Roofs Our solar panel calculator helps you determine how many solar panels can be installed on your roof and how much electricity they can generate.

[How Many Solar Panels Can I Fit on My Roof: A Practical Guide](#)

Deciding how many solar panels can fit on a roof depends on roof size, usable area, panel efficiency, orientation, and local rules. This guide walks through measurements, calculations, ...

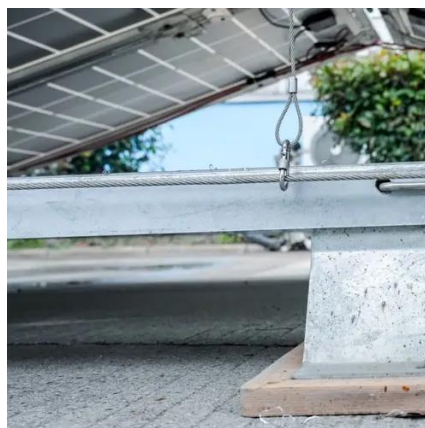


[How Much Roof Space Do I Need for Solar Panels?](#)

Solar panels can work on far more properties than most people expect, but roof space is still one of the first questions to answer. Whether you own a home, manage a commercial building, or ...

Solar Panel Calculator

Determine optimal solar panel size for your energy needs and available roof space.



[How Many Solar Panels Can I Fit on My Roof?](#)

Calculate your roof's maximum physical solar capacity by accounting for dimensions, panel size, and required safety setbacks.



[How Many Solar Panels Will Fit on My Roof?](#)

To estimate how many panels you can install, you must first determine how much of your roof is usable. Professional solar installers typically evaluate: Only south-, west-, or east-facing ...



[How Many Solar Panels Can I Fit on My Roof: Calculate It Easily](#)

Before you begin thinking about generating 100% power for your home, which according to many residents is 20 to 24 panels, there are some things you need to consider. This will help you ...



[How Many Solar Panels Will Fit on My Roof \(Easy Guide\)](#)

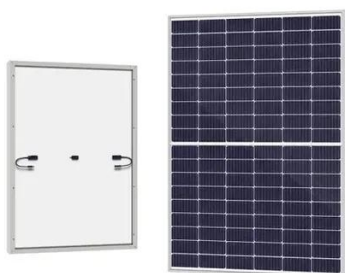


Learn how a "How Many Solar Panels Will Fit on My Roof" calculator works. Simple examples, clear steps, and no confusing math. Perfect for beginners.



[How Many Solar Panels Should You Put on a Roof?](#)

A typical residential solar panel needs approximately 17 square feet, and most homes need between 15 to 22 panels to achieve energy independence. However, factors like chimneys, ...



[Determining How Many Solar Panels Can You Fit on a Roof](#)

To estimate how many solar panels can fit on your roof, you can use a simple calculation. First, measure the total usable area of your roof (subtracting any areas that cannot be ...





Contact Us

For catalog requests, pricing, or partnerships, please visit:

<https://www.iwap.com.pl>

Phone: +34 919 456 782

Email: info@iwap.com.pl

Scan the QR code to access our WhatsApp.

