



How many solar panels can the inverter support





How many solar panels can the inverter support



[How Many Solar Panels Can I Connect to an Inverter?](#)

Your inverter's wattage sets the upper limit on how many panels it can support. Matching panel output closely to this capacity helps prevent energy loss. For optimal efficiency, load your ...

[How Many Solar Panels Can One Inverter Handle?](#)

How to Calculate Solar Panel String Size Manually
Step 1: Determine Inverter Specifications- Identify the voltage input range of the inverter and any safety margins required for ...

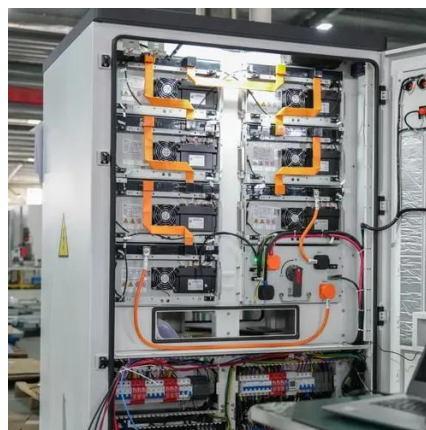


Complete Solar Inverter Sizing Guide

Solar inverter sizing made simple with clear steps for calculating load demand and matching inverter capacity to solar panels.

[How Many Solar Panels Can I Connect to an Inverter? A...](#)

Learn how to optimize your solar power system by understanding how many solar panels can be connected to an inverter. Explore inverter specifications, wiring configurations, and the role of ...



[How do I know how many solar panels I can connect to my inverter?](#)

If you're building or upgrading your solar system, it's important to know how many panels you can safely connect to your inverter. Your inverter's MPPT (Maximum Power Point Tracking) input ...



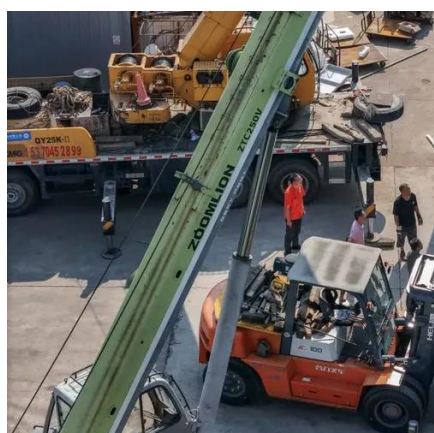
[How Many Solar Panels Can Go On One Inverter?](#)

The maximum number of solar panels that can be connected to a single string inverter is $13 * 1000 = 13 \text{ kW}$ per MPPT. If the inverter is from a reliable model, it will limit the power to your set ...



[How many solar panels can a micro inverter support?](#)

When it comes to solar power systems, micro inverters have emerged as a game - changer. As a micro inverter supplier, I often get asked the question: "How many solar panels can a ...



[How many panels can I connect to one inverter?](#)



Find out how many solar panels you can safely and efficiently connect to one inverter. Read our tips on optimal sizing for maximum yield.

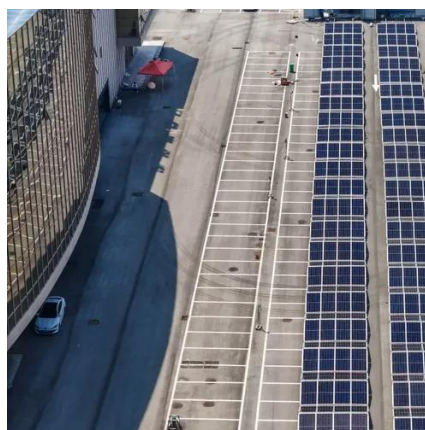


[How many solar panels can an inverter handle](#)

A: Connecting too many solar panels to a single inverter can lead to overloading, which can damage the inverter and result in decreased efficiency. Overloading occurs when the total output ...

[How Many Solar Panels Can I Connect To My Inver...](#)

In the quest for harnessing sustainable and renewable energy sources, solar power stands out as a promising solution to meet our growing energy needs. As individuals and businesses ...





Contact Us

For catalog requests, pricing, or partnerships, please visit:

<https://www.iwap.com.pl>

Phone: +34 919 456 782

Email: info@iwap.com.pl

Scan the QR code to access our WhatsApp.

