



How many watts does a 12v20a solar container battery have



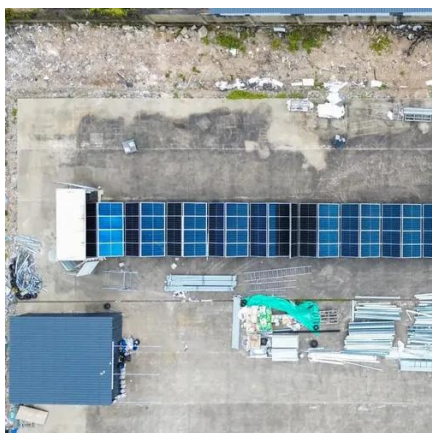


Overview

The power output can be found by multiplying voltage by current, which in this case is 2. To determine the wattage of a solar panel rated at 12 volts and 20 amps, the calculation is straightforward. A 300-watt panel or three 100-watt panels will work. This setup ensures efficient charging within about five hours. To calculate the needed wattage more precisely, consider the. For most real-world setups, a good rule is: use 100–200W of solar to reliably charge a 12V battery (like a 12V 100Ah) if you want daily recharging, not just maintenance. For simple battery maintenance only, 10–30W is often enough. Solar panels typically range from 50 to 400 watts, and the quantity needed correlates directly with your total energy demand and individual panel output. 20A Charge controllers are designed to run 12V or 24V solar.



How many watts does a 12v20a solar container battery have



[What Size Solar Panel Do I Need to Charge A 12V Battery?](#)

For example, a 12V 100Ah lithium battery stores roughly 1,280Wh of energy, while a 12V 200Ah lithium battery stores about 2,560Wh. The larger the battery, the more solar input is required ...

[What Size Solar Panel to Charge 12V Battery?](#)

Here let us take the example of a 12V battery with 50 amp, it requires $50 \times 12 = 600W$. Step 2: Then we need to ascertain the output per hour by the solar panel on an average.



[How to Charge a 12V 20Ah Battery with Solar](#)

For effectively charging a 12V 20Ah battery, it is generally recommended to use a solar panel rated between 20-40 watts; this range allows for adequate charging within a reasonable timeframe under ...

[What Size Solar Panel to Charge a 12V Battery \(Wattage Guide\)](#)

For most real-world setups, a good rule is: use 100-200W of solar to reliably charge a 12V battery (like a 12V 100Ah) if you want daily recharging, not just maintenance.



[How many watts does a 12v20a solar panel have . NenPower](#)

In summary, determining the wattage of a 12V solar panel rated at 20A is straightforward--it computes to 240 watts under ideal circumstances. However, real-world conditions ...



[How Many Watts Solar Panel to Charge a 12V Battery: A Complete ...](#)

To charge a 12V battery with a capacity of 100 amp-hours at 20 amps, you need a solar panel rated at least 240 watts. A 300-watt panel or three 100-watt panels will work. This setup ...



[How Many Watts Can a 20A Charge Controller Handle?](#)

A 20A charge controller can handle 240 watts on a 12V solar system and 480 watts if the system is 24V. More advanced charge controllers support 12V and 24V solar panels and can adjust its settings to ...

[What Size Solar Panel Do I Need to Charge a 12v Battery?](#)



Yes, a 300-watt solar panel can charge a 12-volt battery effectively. A 300-watt panel can generate approximately 25 amps of power per hour under ideal sunlight conditions, making it suitable for ...

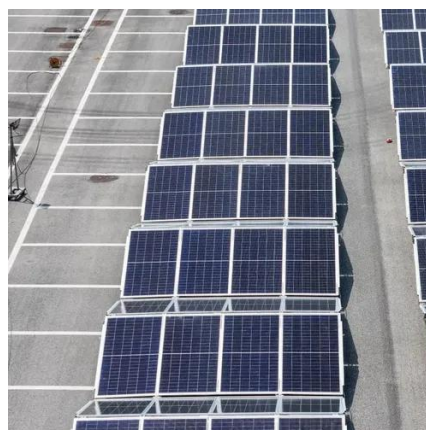


[How Many Watt Solar Panel To Charge 12 Volt Battery: Calculate ...](#)

Calculating Wattage Requirements: Determine the wattage needed by multiplying the battery's amp-hour rating by its voltage, then dividing that number by available sunlight hours to find ...

[Solar Panel Size Calculator for 12V Battery Charging](#)

Use our Solar Panel Size Calculator to determine the perfect panel for charging your 12V battery. Input capacity, voltage, and sun hours for results.





Contact Us

For catalog requests, pricing, or partnerships, please visit:

<https://www.iwap.com.pl>

Phone: +34 919 456 782

Email: info@iwap.com.pl

Scan the QR code to access our WhatsApp.

