



How many watts does a mobile power box usually have





Overview

The short answer: 300–700Wh Portable Power Stations suit most campers. But wait—are you a weekend warrior or an off-grid glamper?

Keep reading to find your perfect power match (and avoid becoming the “no signal” ghost of the campsite). Planning a camping trip?

Keeping your essentials. With capacities ranging from 200Wh to over 5000Wh and power outputs from 300W to 4000W, the choices can be overwhelming. This guide will help you cut through the confusion and find the perfect size for your needs. Most people need a 500-1000 watt-hour unit for camping and small emergencies, while home backup typically requires 1500-3000 watt-hours or more. You can usually find a label or the manual that says something like “Power: 60W” or “120V ~ 1.2A” (if you have amps, multiply by 120 to get watts, so 1.



How many watts does a mobile power box usually have



How to Size a Portable Power Station

A portable power station with a 2,048 Wh capacity will cost around \$1,500 and weigh around 60 pounds, while a power station with a 4,100 Wh capacity may cost around \$3,500 and ...

[What Size Portable Power Station Do I Need? W/Wh Calculator & Guide](#)

Use our free calculator to determine the exact Watts (W) and Battery Capacity (Wh) you need for your portable power station or solar generator. Perfect for camping, RVs, and home backup.

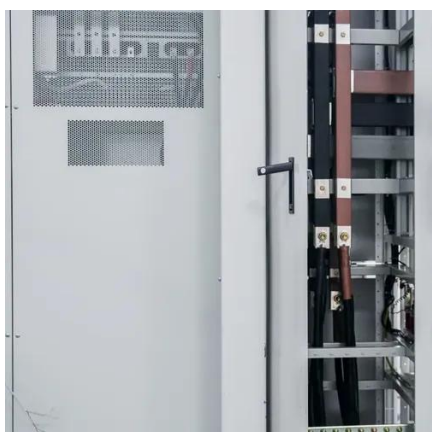


[How Big Of A Portable Power Station Do I Need?](#)

Small portable power stations typically range between 150Wh to 300Wh and are ideal for lightweight applications. These units are designed to charge small devices like smartphones, tablets, ...

[What Size Portable Power Station Do I Need? \(2026 Guide\)](#)

Confused by Watts and Watt-hours? Learn how to calculate the perfect portable power station size for camping, home backup, or off-grid life.



[What Size Portable Power Station Do I Need for Camping?](#)

Tired of your phone dying before your marshmallows roast? The short answer: 300-700Wh Portable Power Stations suit most campers. But wait--are you a weekend warrior or an ...

How To Choose a Portable Power Station

Key Features & Considerations: When choosing a portable power station, consider battery capacity (measured in watt-hours), power output (watts), charging options, and weight/size balance. ...



[How Many Watts Do I Need for a Portable Power Station?](#)

Depending on your device combination, you can choose a suitable portable power station. For users who only need to charge mobile phones and small electronic devices, a 300-500 watt ...



[Calculating What Size Power Station You Need for Emergency Power](#)



So you're sold on getting a portable power station for backup; but how big does it need to be? It's an important question, because these power stations come in all sizes from small 300Wh ...



[What Size Portable Power Station Do I Need? February 2026 Guide](#)

Most people need a 500-1000 watt-hour unit for camping and small emergencies, while home backup typically requires 1500-3000 watt-hours or more. Let me walk you through exactly how ...

[Beginner's Guide to Portable Power for Camping \(2025\)](#)

Power stations come in all shapes and sizes, from palm-sized 150Wh packs to 2000Wh+ beasts meant for RVs. Here's a quick cheat sheet based on your trip style: Keep in mind: A 500Wh ...





Contact Us

For catalog requests, pricing, or partnerships, please visit:

<https://www.iwap.com.pl>

Phone: +34 919 456 782

Email: info@iwap.com.pl

Scan the QR code to access our WhatsApp.

