



How many watts does a polycrystalline silicon photovoltaic panel have





Overview

When asking "how many watts does a polycrystalline solar panel have?

", the answer varies between 250W to 400W for standard models. Several factors influence the power output of a polycrystalline silicon PV panel, including the panel's efficiency, temperature, shading, and, of course, light. Most monocrystalline panels on the market today will have a power output rating of at least 320 watts, but can go up to around 375 watts or higher! Polycrystalline panel efficiency ratings will typically range from 15% to 17%. The lower efficiency ratings are due to how electrons move through the. Example: 5kW solar system is comprised of 50 100-watt solar panels. Alright, your roof square footage is 1000 sq ft. Can you put a 5kW solar system on your roof?

For that, you will need to know what size is a typical 100-watt solar panel, right?

To bridge that gap of very useful knowledge needed. A typical 60-cell panel measures around 5.6 m x 1 m) and produces 250-300 watts of power. 72-cell panels are slightly larger, around 6. On average, you can expect to pay \$.



How many watts does a polycrystalline silicon photovoltaic panel have



[How Many Solar Cells Are in a Typical Panel?](#)

A typical 60-cell panel measures around 5.4 feet by 3.25 feet (1.6 m x 1 m) and produces 250-300 watts of power. 72-cell panels are slightly larger, around 6.5 feet by 3.25 feet (2 m x 1 m), ...

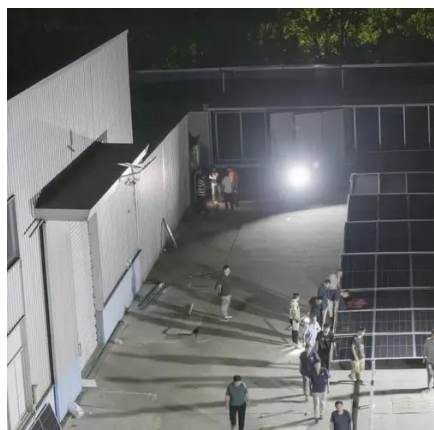
[Monocrystalline vs. Polycrystalline solar panels](#)

Polycrystalline solar cells are also called "multi-crystalline" or many-crystal silicon. Polycrystalline solar panels generally have lower efficiencies than monocrystalline cell options ...



[Standard Solar Panel Sizes And Wattages \(100W-500W Dimensions\)](#)

You can find typical dimensions of 100W, 150W, 170W, 200W, 200W, 220W, 300W, 350W, 400W, and 500W solar panels summarized in the chart below. But, just to emphasize the problem, let's have a ...



[Polycrystalline Solar Panel Specifications](#)

You have a choice of solar panel sizes ranging from 50 to 400 watts, with polycrystalline panels having an efficacy range of 13-17% and monocrystalline panels having a range of 17-19%.



[Polycrystalline Solar Panels: 2026 Costs, Efficiency, Pros & Cons](#)

Before installation, you can expect to pay anywhere from \$0.90 to \$1 per watt for polycrystalline solar panels. However, this price varies based on several factors, such as your ...



[Types of solar panels: monocrystalline, polycrystalline, and thin-film](#)

Find out which of the main types of solar panels are right for your home. We explain the costs, how much power they produce, and how much you'll save.



[How Many Watts Does a Polycrystalline Solar Panel Have A...](#)

When asking "how many watts does a polycrystalline solar panel have?", the answer varies between 250W to 400W for standard models. However, wattage depends on factors like panel size, efficiency ...



[Solar Panels Size & Weight \(Including Commercial Dimensions\)](#)



A typical monocrystalline panel can achieve 20 to 23% efficiency and generate 300 to 550 watts of power, while polycrystalline panels are only 15 to 17% efficient and produce 300 to 400 ...



[What is the power output of a polycrystalline silicon PV panel under](#)

One of the most frequently asked questions by our customers is about the power output of polycrystalline silicon PV panels under different light intensities. In this blog post, I'll delve into this ...

[How many watts does a 3535 polycrystalline solar panel have?](#)

These modules commonly exhibit performance metrics ranging from 250 watts to 300 watts, thereby making them a viable alternative for both residential and commercial installations ...





Contact Us

For catalog requests, pricing, or partnerships, please visit:

<https://www.iwap.com.pl>

Phone: +34 919 456 782

Email: info@iwap.com.pl

Scan the QR code to access our WhatsApp.

