



How much area is needed for 10000w photovoltaic panels





Overview

Most homes need 300-600 square feet of solar panel area. This typically means 15-25 panels depending on efficiency. Check your electric bill for kWh consumption and use our calculator above. Can I install solar panels in a small space?

. The total area needed for solar panel installation is vital for effective PV system design and planning. On average, the amount of required roof space for a set of home solar panels is between 300 sq ft and 500 sq ft total. This guide will walk you through the factors influencing solar panel sizing, including energy consumption. Size a PV system, estimate energy output, or find panel count from your usage, sun-hours, and performance ratio — with steps and units. The mode changes what you provide (e., daily vs monthly load, or target kW vs usage-based sizing).



How much area is needed for 10000w photovoltaic panels



Photovoltaics

Calculator for the power per area or area per power of a photovoltaic system and of solar modules. You can enter the size of the modules and click from top to bottom, or omit some steps and start e.g. with ...

[How to calculate the surface area required by solar panels](#)

By the end of this guide, you'll be able to estimate the necessary surface area for your solar panels and make informed decisions about your solar energy system.



Solar Panel Calculator

The solar panel calculator is a tool that helps users estimate the requirements for a solar panel system based on various input parameters. It takes into account factors such as the daily energy needs of a ...

[? Master Of Solar Panel Area Calculator: ?79% of Guess!](#)

A solar panel area calculator helps you find the exact space needed for your solar power system. This free tool takes your energy needs and shows you the square footage required on your roof or property.



[How much area is needed for solar panel installation](#)

To help you decide if your property is suitable for solar, this guide outlines roof space requirements and breaks down how to calculate the area needed for your home solar panel installation.



Solar Panel Size Calculator

Definition: This calculator estimates the required solar panel area based on power needs, panel efficiency, and solar irradiance. Purpose: It helps homeowners, engineers, and solar installers ...



[Solar Power Roof Area Calculator , Roof Space Needed for a Solar ...](#)

The Solar Power Roof Area Calculator is a valuable tool designed to help users estimate the required roof area for installing solar panels. Its primary use is to determine how much space is ...



Solar Panel Calculator for System Sizing



Calculate your solar panel requirements effortlessly. Our Solar Panel Calculator helps you size your system correctly.



[Total Area Required for Solar Panel Installation Calculator](#)

Calculate the total area needed for your solar panel installation quickly and accurately with our easy-to-use solar panel area calculator.



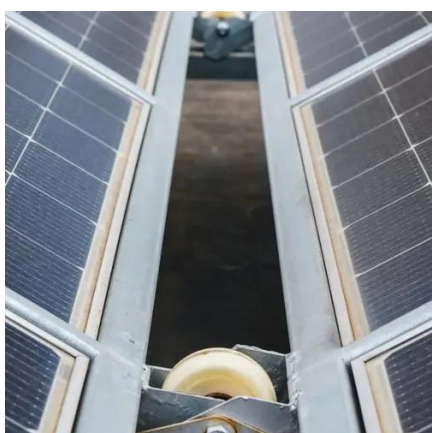
[How to Calculate the Surface Area Required by Solar Panels](#)

You have estimated the size of the solar system that you need and are ready to get the equipment from the market to install it. But wait, are you sure you have enough space in your garden ...



[How To Calculate Solar Panel Needs: Complete 2025 Guide](#)

Peak sun hours represent the equivalent number of hours per day when solar irradiance averages 1,000 watts per square meter. This varies dramatically by geographic location: Peak Sun ...





Contact Us

For catalog requests, pricing, or partnerships, please visit:

<https://www.iwap.com.pl>

Phone: +34 919 456 782

Email: info@iwap.com.pl

Scan the QR code to access our WhatsApp.

