

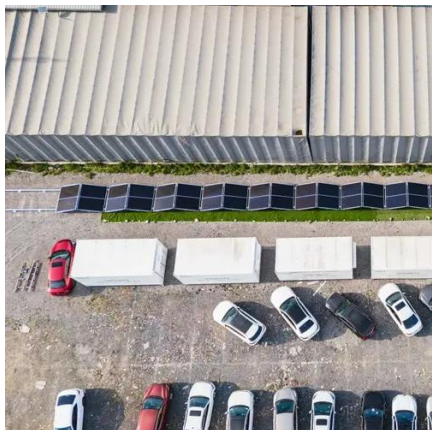


How much current is normal for a base station battery





How much current is normal for a base station battery



Battery Sizing Considerations IEEE 2020

The Battery's Purpose Batteries provide DC power to the switchgear equipment during an outage. Best practice is to have individual batteries for each load/application. Duration of backup is ...

[Understanding Battery Current: How It Works. Measurement ...](#)

Understanding battery current is important to optimize battery performance, ensure safe operation, and prevent damage from improper use. If you want to extend the life of your device, ...



SECTION 6: BATTERY BANK SIZING PROCEDURES

Constant-Current vs. Constant-Power Loads
Typically easiest to deal with constant-current loads Convert constant-power loads to constant current Approximate, because battery ...

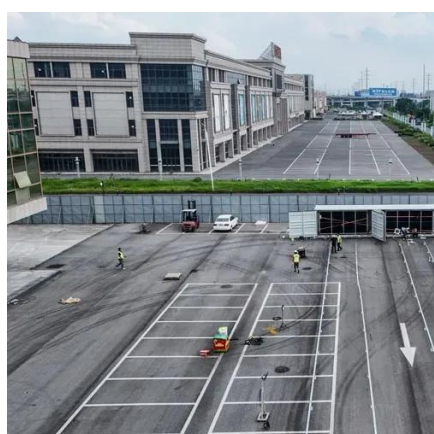
[Optimum sizing and configuration of electrical system for](#)

The rising demand for cost effective, sustainable and reliable energy solutions for telecommunication base stations indicates the importance of integration and exploring the feasibility ...



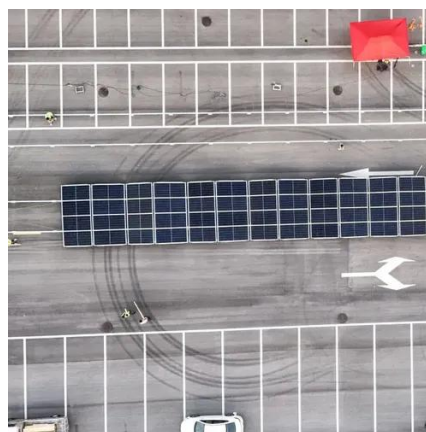
[5G Base Station Lithium Battery: Capacity and Discharge Rate ...](#)

EverExceed's high-rate discharge LiFePO4 batteries are engineered to handle these demanding conditions, ensuring stable and efficient power delivery to 5G infrastructure. Why Choose ...



[How to Determine the Right Battery Capacity for Telecom Base Stations](#)

Example: If a base station consumes 500W and needs 4 hours of backup at 48V, the required capacity is: $500W \times 4h / 48V = 41.67Ah$ Choosing a battery with a slightly higher capacity ...



[Understanding Backup Battery Requirements for Telecom Base Stations](#)

Telecom base stations require reliable backup power to ensure uninterrupted communication services. Selecting the right backup battery is crucial for network stability and efficiency.



[Telecom Base Station Backup Power Solution: Design Guide for ...](#)



Discover the 48V 100Ah LiFePO4 battery pack for telecom base stations: safe, long-lasting, and eco-friendly. Optimize reliability with our design guide.



Base station battery charging current

Lithium-ion batteries are typically recharged at a Constant current-constant voltage mode. Before beginning to charging, check the battery voltage. If the battery is almost depleted, the ...

Battery current of communication base station

Sep 21, 2018 · For the small-current discharge of alkaline batteries in mobile communication base stations, the Mapo base station in Yuzhong area of Lanzhou suburbs is taken ...





Contact Us

For catalog requests, pricing, or partnerships, please visit:

<https://www.iwap.com.pl>

Phone: +34 919 456 782

Email: info@iwap.com.pl

Scan the QR code to access our WhatsApp.

