



# How much slope is required to install photovoltaic panels





## Overview

---

For most residential properties, a roof with a slope between 30° and 40° is considered optimal for solar panel installation. This angle allows solar panels to lie flat against the roof without requiring additional adjustments, making it easier to install standard racking systems. However, very steep. The slope or pitch of a roof plays a significant role in determining the most efficient installation of solar panels. A flat roof has a pitch of 0-5°, while a low-slope roof is often anything under 15°. Roof pitch, measured as rise over 12 inches of horizontal run, influences.



## How much slope is required to install photovoltaic panels



### Roof Pitch for Solar Panels Calculator

For most residential properties, a roof with a slope between 30° and 40° is considered optimal for solar panel installation. This angle allows solar panels to lie flat against the roof without requiring additional ...

### [Minimum Roof Pitch for Solar Panels: What Roof Angles Work Best](#)

For typical framed PV modules, many installers consider 2:12 to 3:12 as the practical minimum for conventional flush-mounted systems. Roofs below 2:12 are treated as low-slope or flat ...



### [Minimum Roof Pitch for Solar Panels: What Builders and ...](#)

Industry guidance commonly supports a minimum roof pitch around 3:12 (approximately 14 degrees) for standard residential solar installations. A 3:12 pitch offers adequate skylight/shading ...



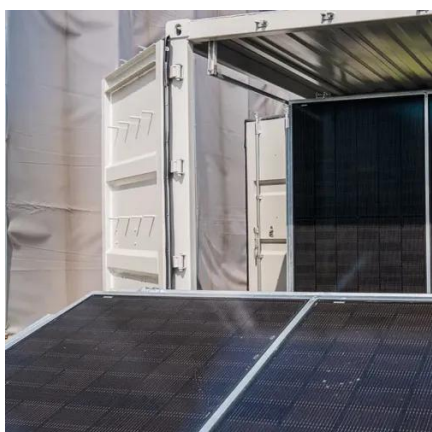
### [What is the appropriate slope for solar panels? . NenPower](#)

The appropriate slope for solar panels is typically between 30 to 45 degrees, but it can vary depending on latitude, desired energy efficiency, and local climate conditions. The angle of ...



### [What Is the Minimum Roof Pitch for Solar Panels?](#)

The minimum roof pitch for solar panels is generally 5°, but panels can be installed on even flatter surfaces with the help of elevated racking systems. What matters most is choosing the ...



### [What's the Best Roof Pitch for Solar Panels?](#)

The best roof pitch for solar panels depends on your home's latitude, roof slope, and weather patterns. Experts recommend setting panel angles equal to your home's latitude.



### **What Roof Pitch is Best for Solar Panels**

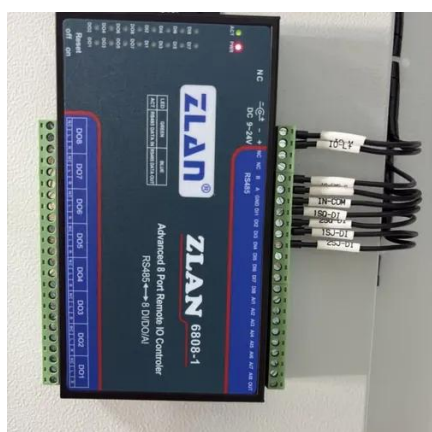
Generally, a pitch between 30 to 45 degrees is often touted as optimal. This range aligns closely with the latitude of many regions, ensuring the panels receive maximum sunlight throughout ...



### [Roof Slope Considerations for Solar Installation: Finding the Perfect](#)



Most modern homes in the U.S. have slopes between 4:12 and 7:12, which are ideal for solar installations without special mounting equipment. Even the perfect roof slope won't help if your ...



### [Solar Panel Roof Requirements: What You Need to Know](#)

The ideal roof pitch for solar panels is between 15 and 40 degrees. This angle ensures the panels get the most sun. Homeowners should check their roof's orientation and pitch. A well ...

### [Minimum Roof Pitch for Solar Panels: A Practical Guide](#)

Key takeaway: For most homes, a minimum slope around 2:12 to 3:12 balances drainage, installer flexibility, and module efficiency. Higher pitches improve snow shedding and maintenance ...





## Contact Us

---

For catalog requests, pricing, or partnerships, please visit:

<https://www.iwap.com.pl>

Phone: +34 919 456 782

Email: [info@iwap.com.pl](mailto:info@iwap.com.pl)

Scan the QR code to access our WhatsApp.

