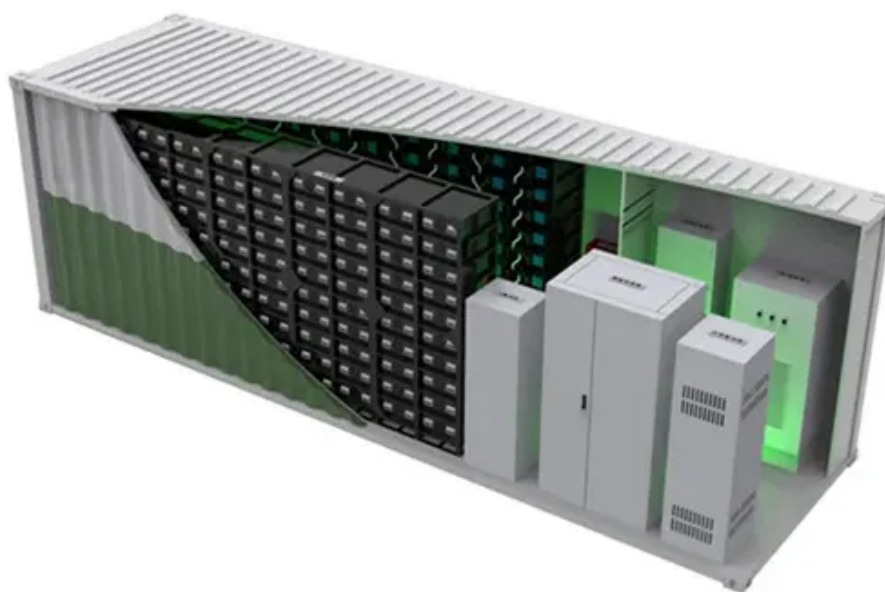




How much weight does a wind turbine blade have





How much weight does a wind turbine blade have



[Wind Turbine Blade Weight: A Comprehensive Guide](#)

What is the average weight of wind turbine blades for offshore installations? Q. How do manufacturers transport wind turbine blades given their weight and size? Q. What is the relationship ...

[How Much Does a Wind Turbine Blade Weigh?](#)

The average weight of a wind turbine blade is around 11,000 pounds, with some blades weighing up to 20 tons. Offshore turbine blades ...



[How Heavy Are The Blades Of A Wind Turbine?](#)

The average weight of a wind turbine blade is around 11,000 pounds, with some blades weighing up to 20 tons. Offshore turbine blades typically weigh around 12 tons, and blade weight ...

[What Does A Large Wind Turbine Blade Weigh](#)

In terms of weight, a single wind turbine blade can weigh between 1.5 to 2 tons (3,000 to 4,000 pounds). As of 2020, numerous large turbines have been installed worldwide, generating ...



[Wind Turbine Blade Weight: The Surprising Truth You Must Know](#)

Each individual wind turbine blade, even those of moderate size, can weigh tens of thousands of pounds. For the largest, state-of-the-art blades currently deployed, this figure can soar ...



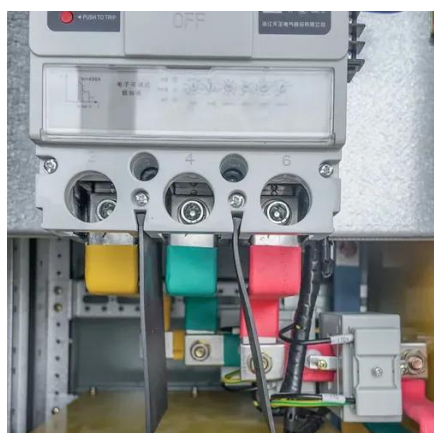
[How Much Does a Wind Turbine Blade Weigh?](#)

The weight of a wind turbine blade can vary based on its size and design, with a typical blade weighing around 5 tons. However, larger blades, especially those used in offshore or high ...



[How Much Does a Wind Turbine Blade Weigh?](#)

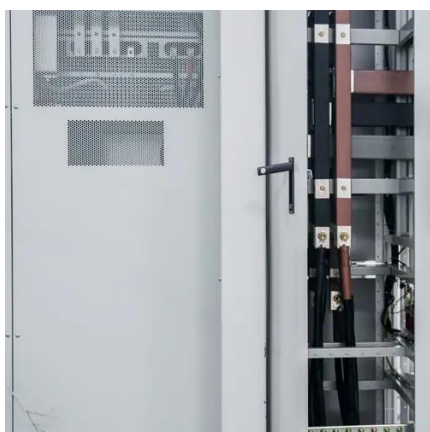
The weight of a wind turbine blade varies considerably with its size, but typically, a single modern onshore wind turbine blade can weigh between 12,000 and 17,000 kilograms (26,455 to ...



How Much Does A Wind Turbine Blade Weigh



The largest wind turbine blades in use today can be over 350 feet (107 meters) long, with each blade weighing as much as 30,000 pounds (13,607 kg). Heavier blades capture more energy: ...



[How Much Does a Wind Turbine Weigh? Full Breakdown](#)

Weighing between 5,000 and 30,000 pounds each, these blades vary in length and design depending on the turbine size and intended wind conditions. This variation illustrates how the ...

[National Wind Watch . Size of Industrial Wind Turbines](#)

How much do wind turbines weigh? In the GE 1.5-megawatt model, the nacelle alone weighs more than 56 tons, the blade assembly weighs more than 36 tons, and the tower itself weighs about 71 tons -- ...



[How Much Does a Wind Turbine Blade Weigh?](#)

Ever wondered how much a wind turbine blade weighs, how thick it is, and how much it costs to buy or replace? The answers might surprise you



Contact Us

For catalog requests, pricing, or partnerships, please visit:

<https://www.iwap.com.pl>

Phone: +34 919 456 782

Email: info@iwap.com.pl

Scan the QR code to access our WhatsApp.

