

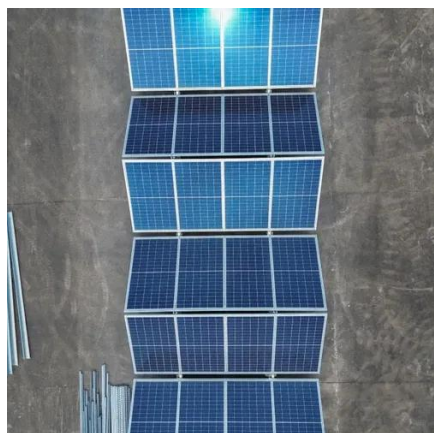


How thick are photovoltaic solar panels





How thick are photovoltaic solar panels



[Solar Panel Size & Dimensions Guide 2025 . Complete Specs](#)

In this comprehensive guide, you'll learn everything you need to know about solar panel sizing, from standard dimensions to weight considerations, helping you determine the perfect solar ...

[How Thick Are Solar Panels? Solar Panel Size Explained](#)

Most traditional solar panels measure between 30mm and 40mm (1.18 to 1.57 inches) thick. This thickness is typical for models that use crystalline silicon cells. New technologies have ...

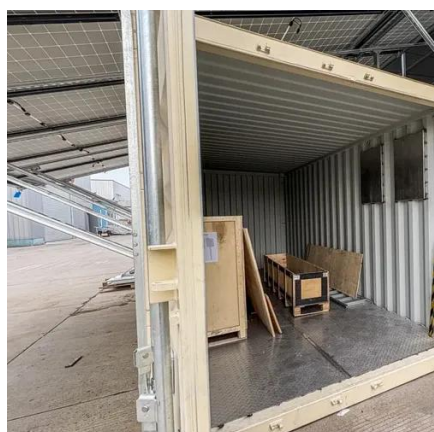


Solar Panel Thickness

Solar panels are a key component in solar power systems, and the thickness of the panels is an important factor in determining the overall efficiency of the system. The thickness of ...

[Solar Panel Thickness: What You Need to Know Before ...](#)

Learn how solar panel thickness impacts performance, durability, and cost. This article offers insights to help you make the best purchase decision.



[How Solar Panel Thickness Affects Durability: What You Need to Know](#)

Solar panel thickness plays a vital role in both durability and long-term performance. It combines multiple layers optimized for energy production and structural integrity. What Determines Solar Panel ...

[How Thick Are Solar Panels? Standard & Thin-Film](#)

Standard residential and commercial solar modules, which use framed monocrystalline or polycrystalline silicon cells, maintain a consistent depth determined by industry conventions. The ...



How Thick Are Solar Panels?

The typical thickness of a solar panel ranges from 30 to 50 millimeters (approximately 1.18 to 1.97 inches), though variations exist depending on the specific design, materials, and ...

[Photovoltaic Solar Panel Glass Thickness Standards: Industry Insights](#)



Solar panel glass thickness directly impacts durability, efficiency, and ROI for commercial and residential installations. This guide explores global standards, technical trade-offs, and emerging trends - with ...



thick are solar panels?Complait Guid

A standard residential solar panel typically measures around 65 inches by 39 inches, while a commercial solar panel is often larger at approximately 78 inches by 39 inches to ...

[We Analyzed 100 Solar Panels: Dimensions, Efficiency, & Load](#)

Solar panel depth, or thickness, is relatively consistent, generally ranging from 1.18 to 1.57 inches. Panels with a 1.38-inch (35 mm) depth are quite common. Some models, especially those designed ...





Contact Us

For catalog requests, pricing, or partnerships, please visit:

<https://www.iwap.com.pl>

Phone: +34 919 456 782

Email: info@iwap.com.pl

Scan the QR code to access our WhatsApp.

