



How to calculate the area of a photovoltaic panel





Overview

The formula to calculate the area is simplified to: $\text{Area} = \text{Energy Demand} / (\text{Solar Panel Output} \times \text{Solar Hours})$. Estimating solar panel output begins with individual panel specifications. Tip: $\text{Gross area} = \text{Net module area} \times \text{Layout factor}$ (accounts for row spacing, walkways, setbacks). The total power output of the solar system can be calculated. To help you decide if your property is suitable for solar, this guide outlines roof space requirements and breaks down how to calculate the area needed for your home solar panel installation. A simple calculation can help you figure out the right setup. Read more to understand it step by step so you can plan your solar installation with confidence.



How to calculate the area of a photovoltaic panel

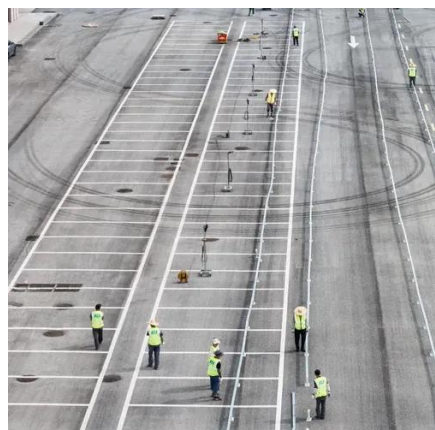


[How to Calculate the Area Required for Solar Panel Installation: A](#)

Here is a step-by-step guide: If you use 900 kWh/month, your daily need = 30 kWh ($900 \div 30$). If you get 5 peak sunlight hours/day, the required output = 6 kW ($30 \div 5$). Considering a 20% ...

Solar Panel Calculator

Enter a few required parameters into the following calculator and estimate the number of panels, solar array dimensions, and area required to install a solar system. Use the solar panel calculator to ...



[Solar Power Roof Area Calculator , Roof Space Needed for a Solar ...](#)

The Solar Power Roof Area Calculator is a valuable tool designed to help users estimate the required roof area for installing solar panels. Its primary use is to determine how much space is ...

Solar Panel Area per kW Calculator

A: Multiply the result by your desired system size in kW (e.g., for a 5 kW system, multiply area/kW by 5).



- LiFePO₄ Battery, safety
- Wide temperature: -20~55°C
- Modular design, easy to expand
- The heating function is optional
- Intelligent BMS
- Cycle Life: > 6000
- Warranty: 10 years



[How to calculate solar energy installed area ,
NenPower](#)

To calculate the installed area necessary for solar energy production, it is critical to first assess the energy demands of the household or facility. Power consumption can vary greatly ...



[Total Area Required for Solar Panel Installation
Calculator](#)

Calculate the total area needed for your solar panel installation quickly and accurately with our easy-to-use solar panel area calculator.



[How to Calculate the Surface Area Required by
Solar Panels](#)

But wait, are you sure you have enough space in your garden or your backyard or your rooftop to install the solar panels? How can you do a rough estimate of the area required by the solar ...



[Calculating Solar Panel Area Requirements , True
Geometry's Blog](#)



Solar Panel Area Calculation This calculator determines the required area of solar panels for a given power plant capacity, irradiance, and panel efficiency.



[How much area is needed for solar panel installation](#)

To help you decide if your property is suitable for solar, this guide outlines roof space requirements and breaks down how to calculate the area needed for your home solar panel installation.

[? Master Of Solar Panel Area Calculator: ?79% of Guess!](#)

Free solar panel area calculator helps you determine exact space needed for your solar system. Calculate solar area per kW, find panel count, and estimate costs instantly.





Contact Us

For catalog requests, pricing, or partnerships, please visit:

<https://www.iwap.com.pl>

Phone: +34 919 456 782

Email: info@iwap.com.pl

Scan the QR code to access our WhatsApp.

