



How to check the male and female connectors of photovoltaic panels





Overview

To identify a solar panel's polarity, check the MC4 connectors (male/female) or use a multimeter (DC voltage mode)—positive terminals show +V (e., +18V for a 20W panel), negative reads -V or zero. In this article, we'll explore how to identify the positive and negative terminals of a solar panel, check solar panel polarity, and effectively connect a solar panel to a battery. Checking Solar Panel Polarity 3. Always verify before connecting. If the polarities are not labeled, two methods can be used to check. With this method, you are looking for the side of the diode with the stripe inside the junction box of the solar panel. Look for “+” and “-” symbols stamped into the panel frame, embossed on wiring insulation, or printed on adhesive labels under.



How to check the male and female connectors of photovoltaic panels



[Which Solar Panel Connector Is Positive? \(Types Listed\)](#)

How Do You Tell The Positive And Negative Terminal Of A Solar Panel? Most solar panels will have the polarities of the terminals labeled. If the polarities are not labeled, two methods ...

[Which Solar Panel Connector Is Positive? \(Types Listed\)](#)

How Do You Tell The Positive and Negative Terminal of A Solar Panel? What Are The Different Solar Panel Connectors? How Do You Install A Solar Panel Connector? What Happens If You Hook Up A Solar Panel backwards? Most solar panels will have the polarities of the terminals labeled. If the polarities are not labeled, two methods can be used to check. The first is by looking at the diode and the second is by testing with a multimeter. See more on [solarportablepanel solar-system \[PDF\]](#)

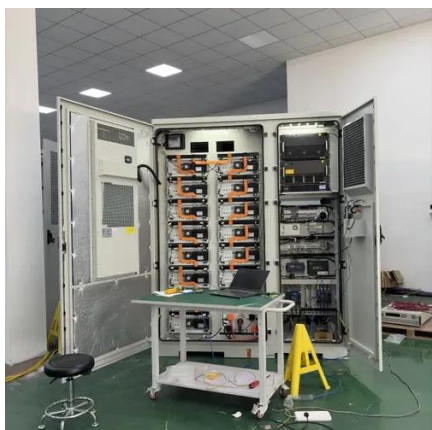


How to distinguish positive and negative poles in photovoltaic panels

Know how to identify positive solar panel connectors with this step-by-step guide. From using markings and coloring to testing connections with a multimeter, we cover all the essential tips to ensure your ...

[The Complete Guide to Solar Panel Connectors: Types, Installation, ...](#)

Male and Female Connectors: Solar panel connectors typically consist of male and female parts that fit together securely. The male



connector usually has a metal pin, while the female ...

[Identifying Positive and Negative Terminals on a Solar Panel](#)

Incorrect wiring can lead to wasted energy and additional costs, undermining the benefits of solar power. In this article, we'll explore how to identify the positive and negative terminals of a ...

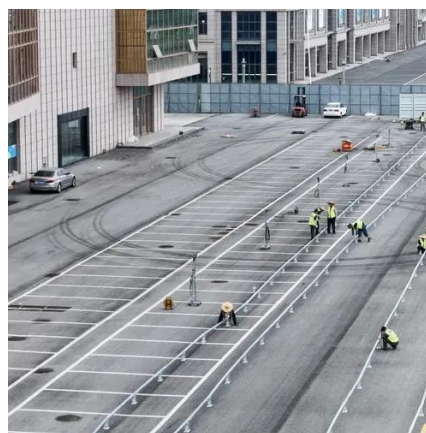


[Identify Positive Solar Panel Connectors , PV Connector , A Step-by](#)

Know how to identify positive solar panel connectors with this step-by-step guide. From using markings and coloring to testing connections with a multimeter, we cover all the essential tips ...

[Solar Panel Positive and Negative \(Diode + Voltmeter\)](#)

Solar panel positive and negative must be determined. Learn how to check solar panel polarity as well as fix reverse polarity with our easy-to-follow guide.



[How to distinguish positive and negative poles in photovoltaic panels](#)



Know how to identify positive solar panel connectors with this step-by-step guide. From using markings and coloring to testing connections with a multimeter, we cover all the essential tips to ensure your ...

[What Are the Different Types of Solar Panel Connectors?](#)

Comparing the different connector types will give you a better understanding of their similarities and differences as you build your solar power system. In the table below, we will look at a ...



[How do you know if a solar panel is positive or negative](#)

To identify a solar panel's polarity, check the MC4 connectors (male/female) or use a multimeter (DC voltage mode)--positive terminals show +V (e.g., +18V for a 20W panel), negative reads -V or zero.

[How to distinguish the male and female connectors of ...](#)

Before we venture into the myriad details of solar panel connectors, it is vital to form a picture of the basic idea behind male and female connectors. These connectors enable different parts of a solar ...



[How to identify positive and negative solar panel polarity](#)



For systems using industry-standard MC4 connectors, polarity is built into the design. Male connectors (with a protruding metal pin) are usually positive, while female connectors (with a recessed socket) ...



Contact Us

For catalog requests, pricing, or partnerships, please visit:

<https://www.iwap.com.pl>

Phone: +34 919 456 782

Email: info@iwap.com.pl

Scan the QR code to access our WhatsApp.

