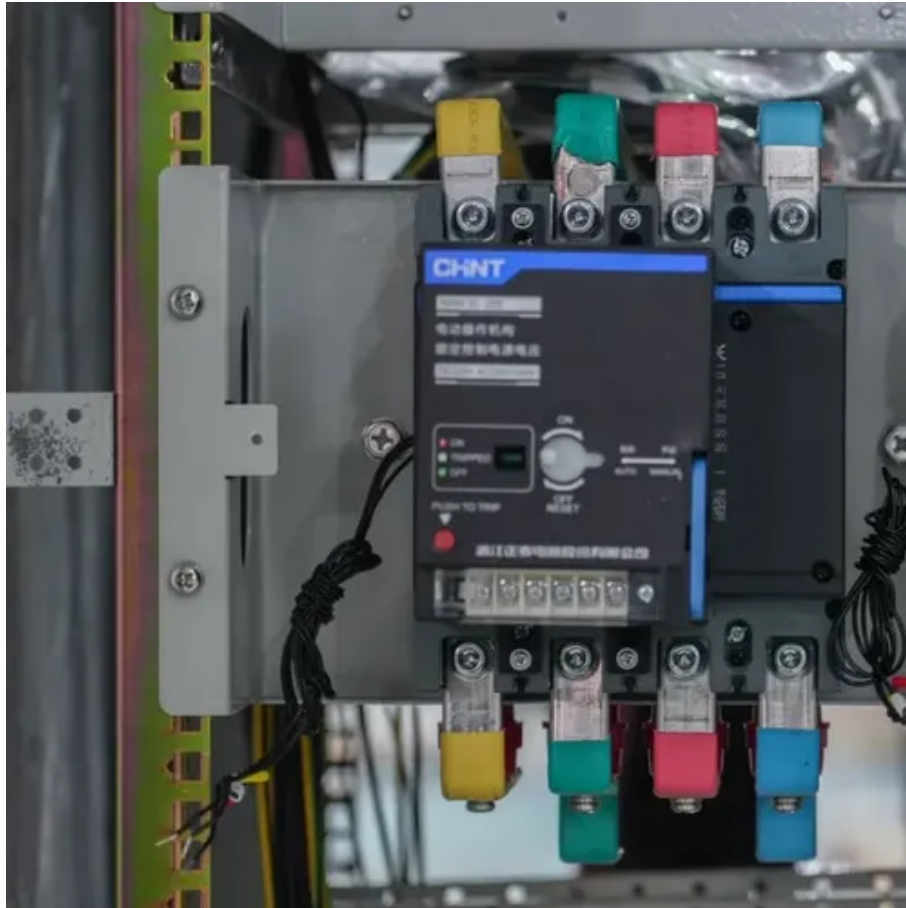




How to connect photovoltaic panels and junction boxes





Overview

This blog covers the basics of series and parallel connections, the use of junction boxes and combiners, and the process of connecting panels to inverters or charge controllers. Step-by-step instructions are provided, emphasizing safety precautions and the use of appropriate. Wiring a solar panel junction box is the critical foundation of any photovoltaic (PV) system's reliability and safety. Whether you're installing a small residential array or a larger commercial system, understanding how to properly wire and connect your solar panels directly impacts system. In this video, we're showing you how to set up the wiring and install the junction box for your roof-mounted solar panels. The PV. One such crucial component is the solar junction box. It plays a key role in ensuring that the electricity your solar panel generates.



How to connect photovoltaic panels and junction boxes



[How To Wire A Solar Combiner Box Or Pass-Through Box?](#)

Learn how to wire a solar combiner box or pass-through box safely and efficiently. Simplify solar panel connections and optimize system performance with this guide.

[Solar Combiner Box Installation and Wiring Diagram](#)

Learn how to safely install and wire a solar combiner box for DC PV systems. Step-by-step guide covers wiring, grounding, surge protection (SPD), and best practices for solar panel arrays.



PV Junction Box: purpose and connection

A photovoltaic (PV) junction box is an important part of the solar panels. The junction box is an enclosure on the module where the PV strings are electrically connected.

[Connecting Solar Panels: Junction Box Wiring](#)

Learn how to wire a solar panel junction box to ensure proper connections and maximize the efficiency of your solar power system.



[Solar Junction Box Guide: Installation and Maintenance](#)

This guide provides all the information you need to install a junction box for solar panels, the best materials to use, the current standards and best practices in the industry, and the ...

PV Junction Box: purpose and connection

How Is The Junction Box Connected to The Solar Panel? How to Connect The Solar Panel Junction Box to The Solar array? How Does The PV Junction Box Protect The Solar Panel? A PV junction box is attached to the back of the solar panel (TPT) with silicon adhesive. It wires the (usually) 4 connectors together and is the output interface of the solar panel. See more on sinovoltaics
Published: Oct 9, 2011 elecdiags



Connecting Solar Panels: Junction Box Wiring

See More

Learn how to wire a solar panel junction box to ensure proper connections and maximize the efficiency of your solar power system.

[How To Use Junction Connectors For Solar Panels?](#)



In this guide, we'll walk you through the essentials of using junction connectors for solar panels, from understanding the basics of junction boxes to properly wiring your panels and extending ...

[DIY Solar , Solar Panel Roof Junction Box](#)

In this video, we're showing you how to set up the wiring and install the junction box for your roof-mounted solar panels.

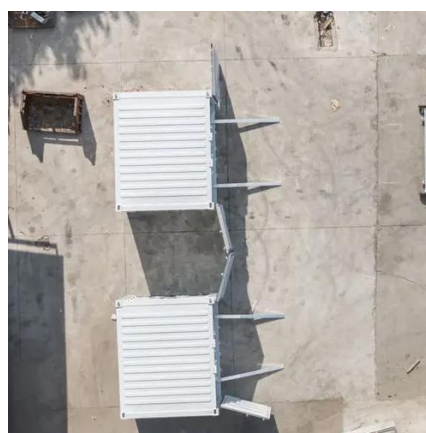


[Step-by-Step Guide: Wiring Your PV Combiner ...](#)

A pv combiner box wiring diagram is a useful tool for understanding how to properly connect multiple photovoltaic panels in a solar power system.

[How to Wire a Solar Panel Junction Box: Professional Guide \[2026\]](#)

Learn how to wire a solar panel junction box safely. This step-by-step guide covers wire preparation, MC4 crimping techniques, terminal torquing, and NEC 690 compliance.



How To Connect Solar Panels?



Proper wiring of solar panels is crucial for optimal performance and safety. This blog covers the basics of series and parallel connections, the use of junction boxes and combiners, and ...





Contact Us

For catalog requests, pricing, or partnerships, please visit:

<https://www.iwap.com.pl>

Phone: +34 919 456 782

Email: info@iwap.com.pl

Scan the QR code to access our WhatsApp.

