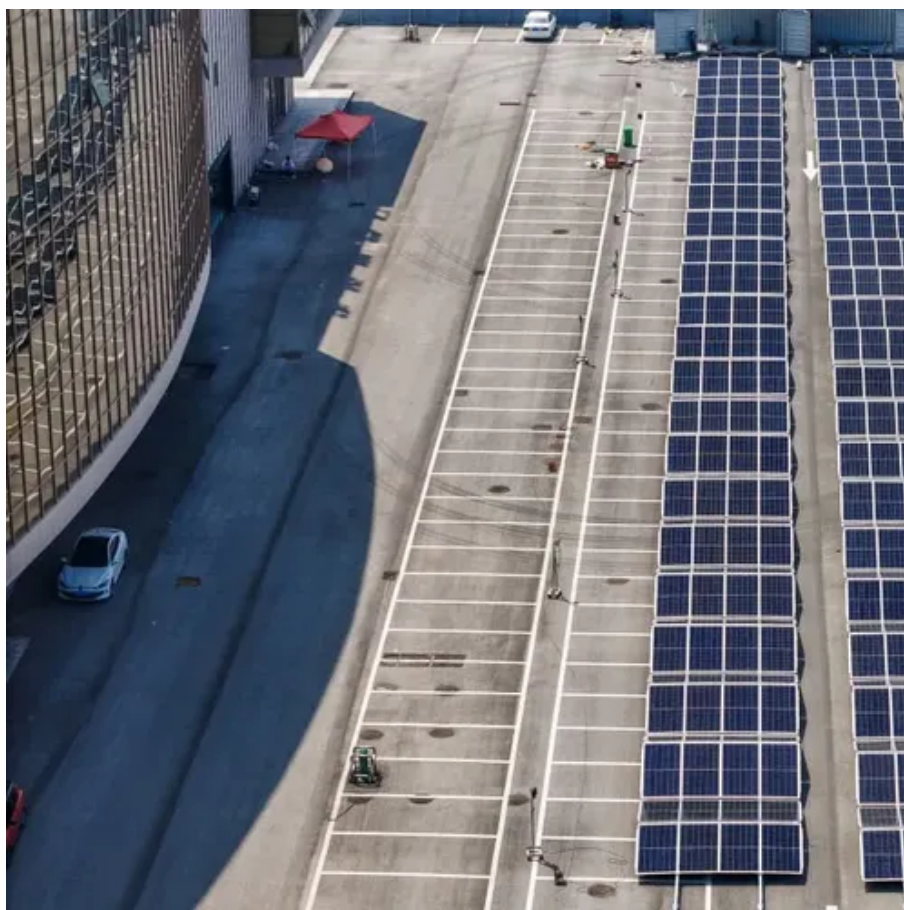




How to replace photovoltaic panels on a slope





How to replace photovoltaic panels on a slope

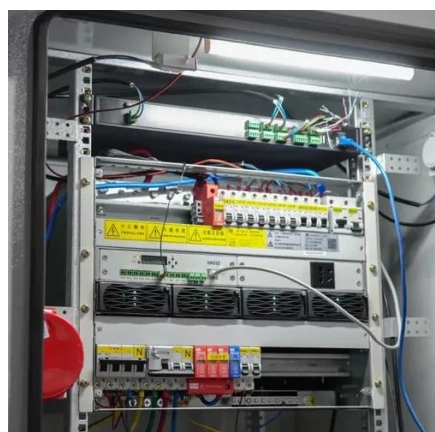


[How to Install Solar Panels on a Sloped Roof: Step-by-Step Guide for](#)

Learn how to effectively install solar panels on a sloped roof with our detailed guide. Discover the benefits, step-by-step installation process, safety tips, and maintenance advice to maximize energy ...

[What To Know About Replacing Your Roof With Solar Panels](#)

Whether you're looking to replace your roof and add solar panels or go through a roof replacement with solar panels already installed, read our guide for more.



[How to install solar energy on a slope , NenPower](#)

Selecting an appropriate mounting solution is pivotal when setting up solar panels on a slope. Various options exist, such as fixed, adjustable, or tracking systems.

Mastering Photovoltaic Panel Installation on Sloped Surfaces: A Step ...

But here's the kicker: installing panels on a 40-degree roof isn't exactly like slapping stickers on a notebook. Let me walk you through the smart way to tackle angled installations without ending up in ...



Slope Solar 101: Key Requirements for Installing Photovoltaic Panels ...

With global solar capacity projected to triple by 2030, engineers are increasingly eyeing slopes for PV installations. But here's the kicker: slopes aren't just angled surfaces - they're dynamic ...



[How to quickly install solar photovoltaic on a slope](#)

Ensuring successful photovoltaic installation on sloped surfaces requires a multifaceted approach that encompasses diligent planning, consideration of environmental factors, adherence to ...



[How to install photovoltaic panels on steep slopes](#)

Optimization of the inclination, orientation and location of photovoltaic solar panels and solar collectors in a solar installation to maximize the use of renewable energy.



[Homeowner's Guide to Solar , Department of Energy](#)



The size, shape, and slope of your roof are also important factors to consider. Typically, solar panels perform best on south-facing roofs with a slope between 15 and 40 degrees, though other roofs may ...



[Best Roof Slope for Solar Panels: Optimal Angles and Practical](#)

Choosing the right roof slope for solar panels affects energy production, installation cost, and long-term performance. This guide explains how roof pitch, geographic location, seasonal sun ...

[Installing photovoltaic panels on steep slopes](#)

Low-slope roofs typically use weatherproof membrane roofing materials like TPO, EPDM, PVC, and modified bitumen, and are installed on slopes of 3:12 (14 degrees) or less.





Contact Us

For catalog requests, pricing, or partnerships, please visit:

<https://www.iwap.com.pl>

Phone: +34 919 456 782

Email: info@iwap.com.pl

Scan the QR code to access our WhatsApp.

