



# How to replace the battery at a communication base station





## Overview

---

To replace the batteries in your Base Station, first unscrew the battery cover on the back of the unit. Finally, screw the cover back on to secure the batteries in place. The base station unit described in this guide emits radio frequency energy through its antenna. Remove the Radio Modem and put the antenna cable (s) carefully through the. This article clarifies what communication batteries truly mean in the context of telecom base stations, why these applications have unique requirements, and which battery technologies are suitable for reliable operations. The phrase “communication batteries” is often applied broadly, sometimes. How do you replace a battery in a base station?

To replace batteries in a SimpliSafe base station, rotate the base counterclockwise (CCW) to remove it, then remove the batteries and replace them while ensuring the (-) and (+) orientation. When disposing of NiMH batteries, they should be recycled.



## How to replace the battery at a communication base station



### [Telecom Base Station Backup Power Solution: Design Guide for 48V ...](#)

Discover the 48V 100Ah LiFePO4 battery pack for telecom base stations: safe, long-lasting, and eco-friendly. Optimize reliability with our design guide.

### [How to replace the battery cell of a mobile base station](#)

Watch the video below for a hands-on experience from our team of experts on how to replace your Base Station. The guided flow below will walk you through the process of transferring your system to a new ...



### [Communication Batteries: Why Telecom Base Stations Have Unique ...](#)

The phrase "communication batteries" is often applied broadly, sometimes including handheld radios, emergency devices, or general-purpose backup batteries. In practice, when ...

### [Communication Base Station Backup Battery](#)

When natural disasters cut off power grids, when extreme weather threatens power supply safety, our communication backup power system with intelligent charge/discharge management and military ...



### [How To Replace Base Station Batteries . SimpliSafe Support Home](#)

You will likely never need to replace your Base Station's batteries as they are rechargeable and meant to last. The Base Station takes four (4) 1.2V, 1300mAh nickel-metal hydride (NiMH) rechargeable ...



### [How to replace the flow battery of a communication base station](#)

What batteries do I need to replace my SimpliSafe base station? To replace the batteries in your SimpliSafe base station, you need QTY (4) AA nickel-metal hydride (NiMH) rechargeable batteries. ...



### [Installation Manual for the BS4 Basestation](#)

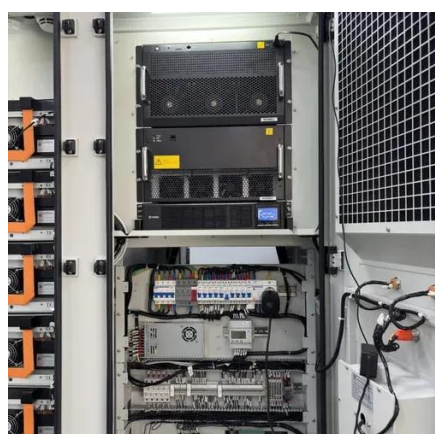
The base station uses a NiMh battery pack to maintain operation during short term power loss. Only replace this pack with the same Telensa type replacement battery pack.



### [How to Replace Your ADT TS Base Station Back Up Battery](#)



With the panel unplugged, unscrew the screw near where it says power on the back of the base station. Once there is no screw you can flip it over and pull the rear cover off. Then unscrew the



### Battery Replacement

Two valve regulated sealed lead acid type rechargeable battery. Shut down the GNSS Base Station. Remove the Radio Modem and put the antenna cable (s) carefully through the cable ...

### [Telecom Backup Battery Upgrade: ONESUN's Zero-Downtime Power ...](#)

In an era where telecom base stations frequently face power outages, equipment failures, and communication interruptions, a reliable backup power solution has become essential.





## Contact Us

---

For catalog requests, pricing, or partnerships, please visit:

<https://www.iwap.com.pl>

Phone: +34 919 456 782

Email: [info@iwap.com.pl](mailto:info@iwap.com.pl)

Scan the QR code to access our WhatsApp.

