



# Huawei solar inverter communication protocol





## Huawei solar inverter communication protocol



### [Huawei Photovoltaic Inverter Communication](#)

What protocol does a Huawei inverter use? As the Huawei inverter business continues to expand, more and more general and customized inverters use the ModBus protocol for communication. This ...

### [PV Plants Connecting to SmartPVMS Quick Guide \(Inverters\)](#)

inverter to implement the communication between the inverter and the app. The Bluetooth module and WLAN module are applicable only to the China region. o Protocol type: MODBUS. o ...

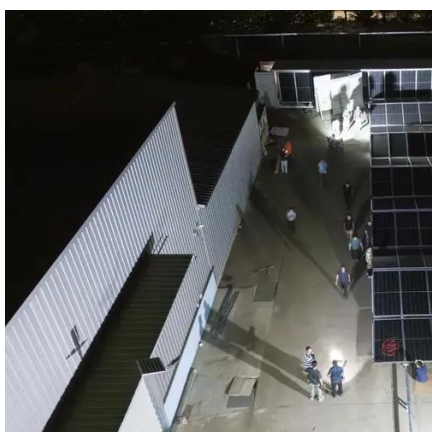


### [Decoding Huawei's Photovoltaic Inverter Communication Interfaces](#)

The Nervous System of Solar Energy Conversion Imagine your solar installation as a symphony orchestra - Huawei's photovoltaic inverters act as both conductor and first violin, with communication ...

### [PV Plants Connecting to SmartPVMS Quick Guide \(Inverters\)](#)

Inverters, SmartLogger3000, MBUS Networking, SmartPVMS Type Description Service Owner PV Plants Connecting to SmartPVMS Quick Guide PV module Purchased by the customer. ...



## User Manual

Purpose This document describes how to connect inverters to the FusionSolar Smart PV Management System through the Smart Dongle (SDongleA and SDongleB, also referred to as Dongle). For details ...

## Modbus Interface Definitions (V3.0)

Huawei solar inverters comply with the standard Modbus protocol, and this document focuses on the information specific to Huawei solar inverters. For other information about Modbus, ...



## SUN2000

FE Communication (Optional) FE communication is mainly used in distributed rooftop scenarios with a small number of inverters. The inverter can directly connect to the PC over the Ethernet to implement ...

## Modbus Interface Definitions (V3.0)



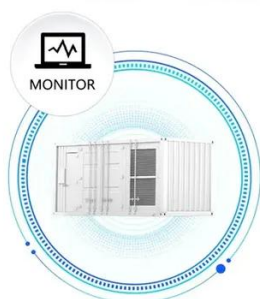
Trademarks and Permissions  
 1 Supported Models  
 2 Overview  
 3 Register Definitions  
 5.2.2 Q-U Characteristic Curve  
 5.3 Grid Codes  
 6.3.2 Exception Code List  
 6.3.6 Reading Device Identifiers (0x2B)  
 Modbus is a widely used protocol for device communications. This document describes the Modbus protocol used by Huawei solar inverters, and can be used to regulate follow-up third-party integrated development. Huawei solar inverters comply with the standard Modbus protocol, and this document focuses on the information specific to Huawei solar inverter. See more on forum.iobroker.de/c/protection



## Decoding Huawei's Photovoltaic Inverter Communication Interfaces

The Nervous System of Solar Energy Conversion  
 Imagine your solar installation as a symphony orchestra - Huawei's photovoltaic inverters act as both conductor and first violin, with communication ...

SUPPORT REAL-TIME ONLINE MONITORING OF SYSTEM STATUS



### RS485 COMMUNICATION CABLES CONNECTION TO

...

-Protocol: the protocol is MODBUS RTU. -Address: the RS485 address ranges from 1 to 247. -Match resistance: this parameter is set to Disable by default. If signals are distorted or the ...

### GitHub

Huawei Solar Tools is a Python library that enables communication with Huawei solar inverters, batteries, power meters, and EMI devices using Modbus TCP. It provides utilities for ...

### LIQUID COOLING ENERGY STORAGE SYSTEM

EMS real-time monitoring  
 No container design  
 flexible site layout



Cycle Life  
**≥ 8000**

Nominal Energy  
**200kwh**

IP Grade  
**IP55**



## Contact Us

---

For catalog requests, pricing, or partnerships, please visit:

<https://www.iwap.com.pl>

Phone: +34 919 456 782

Email: [info@iwap.com.pl](mailto:info@iwap.com.pl)

Scan the QR code to access our WhatsApp.

