



Huawei solar inverter displays red





Overview

If the alarm/maintenance indicator is red, an internal fault on the DC side of the inverter was generated. The inverter is in grid-tied mode. In many cases, it's just your system's way of letting you know it noticed something out of the ordinary. A red light could mean a range of things: a temporary glitch, a false alarm. A red light display on an inverter can be confusing and at the same time raise concerns. But like any piece of technology, Huawei inverter problems can arise – and when they do, Huawei actually provides some of the most advanced built-in. There are two main categories of Huawei error codes: 1. Warning codes These indicate minor issues, such as communication errors or voltage fluctuations, which may resolve on their own or require simple troubleshooting. It could be related to varying weather conditions, seasonal changes, or actual system faults like electrical issues, software glitches, or component malfunctions.



Huawei solar inverter displays red



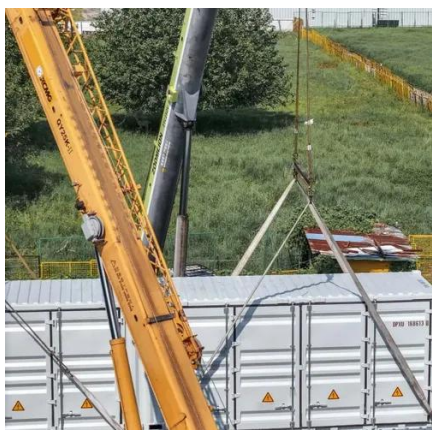
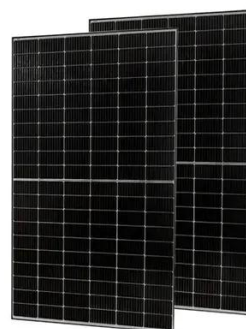
PV Guru

PV Guru - Inverter DC LED Blinks red quickly , PV Guru is back with EP14! ? In this episode, we'll explore the indicators that reflect the running status of your inverter.

[A Homeowner's Troubleshooting Guide For Huawei](#)

...

Understand, reset and solve all Huawei inverter problems quickly. ...



My inverter has a red light - what now?

Don't panic! Here's what to do... Seeing a red light on your solar inverter can be a little alarming--but it's not always a sign of something serious. In many cases, it's just your system's way ...

[Red Light Flashing on Solar Inverter - Why?](#)

A red light on your solar inverter usually means there's a fault or error in the electrical system. This could be because of a variety of issues, such as wiring problems, inverter faults, or issues with the solar ...



Inverter Status Abnormal

This document provides common troubleshooting cases for Huawei residential Smart PV solution and provides reference for engineers and users to handle common issues.



[Why Is My Inverter Showing a Red Light? Common Causes and ...](#)

Why is your inverter showing a red light? This simple guide explains the common reasons behind the red indicator and practical solutions you can try at home. Ideal for users facing ...



[A Homeowner's Troubleshooting Guide For Huawei Inverters](#)

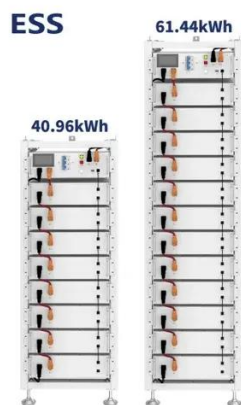
Understand, reset and solve all Huawei inverter problems quickly. Our expert Sydney team explains fault codes and other issues and when to call a professional.



[Huawei Solar Inverter Troubleshooting And Error Codes](#)



Learn how to troubleshoot Huawei solar inverter error codes and issues. Keep your solar power system running efficiently with our Sydney solar repair experts' guide.



SUN2000

If the alarm/maintenance indicator is red, an internal fault on the DC side of the inverter was generated. The inverter is in grid-tied mode. If the alarm/maintenance indicator is red, an environmental fault on ...

[Huawei SUN2000 -- Installation & Fault Codes \(Professional Guide\)](#)

Use the inverter's alarm logs and FusionSolar/SmartLogger records for forensic troubleshooting. Never bypass safety features permanently (RCD/AFCI) without documented ...



Lower cost larger system

Verified Supplier

20Kwh
30Kwh

[Huawei Inverter Problems?: Our Troubleshooting Guide](#)

Are Huawei inverter problems and error codes slowing your solar system? Our troubleshooting guide covers all the common faults - and how to deal with them.



Contact Us

For catalog requests, pricing, or partnerships, please visit:

<https://www.iwap.com.pl>

Phone: +34 919 456 782

Email: info@iwap.com.pl

Scan the QR code to access our WhatsApp.

