



Increase the wattage of solar charging panels





Increase the wattage of solar charging panels



[How to increase solar panel output: 6 actionable tips](#)

Here's an overview of some actionable steps you can take to improve solar panel efficiency: 1. Make sure there's nothing blocking your solar panel (shade or dirt) 2. Set the right tilt ...

[How to Calculate Charging Time of Battery by Solar Panel](#)

Panel wattage, sunlight hours, and battery size directly affect charge time. MPPT charge controllers boost efficiency, especially in low light. Clean panels, proper tilt, and correct cable size =

...



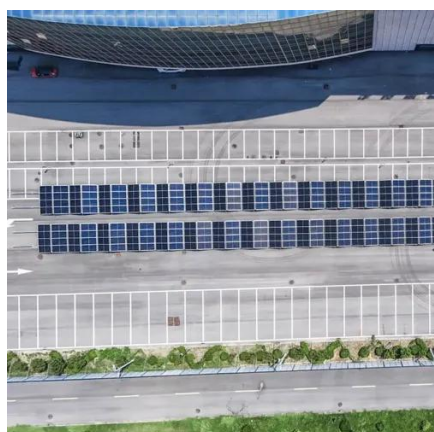
[Everything You Need to Know About Solar Chargers , BatteryStuff](#)

In most cases where a 6-watt or larger solar panel is installed, the use of a charger controller is highly recommended. In a nutshell, a solar charge controller acts like an on and off ...



[Solar Panel Charging Time Calculator , SolarMathLab](#)

Increase panel wattage if charging time exceeds your energy needs. Monitor battery health and temperature; extreme cold or heat can reduce effective charge acceptance. Consider partial charging ...



[9 Proven Ways to Speed Up Portable Solar Charging](#)

Speed up portable solar charging with 9 field-tested tactics. Get faster, more reliable off-grid power using correct angles, MPPT, wiring, and battery care.

I need to add more solar panel charging

There's a concept known as over-paneling where you stay within the max voltage range of your MPPT controller but increase the total current your solar arrays are able to generate by wiring ...



[How To Fast-Charge A Battery With A Solar Panel?](#)

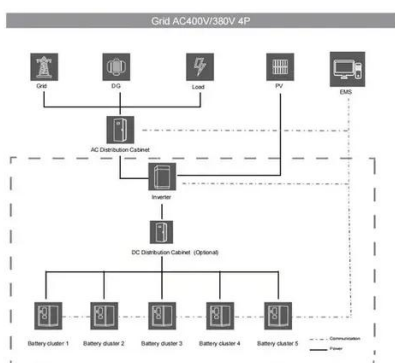
Discover how to fast-charge a battery with solar panels. Learn techniques, factors, and real-world applications for maximum efficiency.



[Can You Boost Charging Performance by Adding More 200W Solar Panels?](#)



Adding more 200W panels can indeed increase your solar charging performance. The combined power output will result in more energy being generated during peak sunlight hours. This ...



[Does Adding More Solar Watts Help Power Battery Charging ...](#)

Increasing solar panels boosts energy output. This results in quicker recharging of the battery. For instance, connecting four extra 100W panels in parallel to your current system enhances ...

Increasing wattage

You connect your additional panels to the additional controller, then connect the controller to either the AIO terminals, bus bar or batteries, whichever is convenient.





Contact Us

For catalog requests, pricing, or partnerships, please visit:

<https://www.iwap.com.pl>

Phone: +34 919 456 782

Email: info@iwap.com.pl

Scan the QR code to access our WhatsApp.

