



Inverter master-slave control power





Overview

The research group explained that using parallel inverters in PV systems is a strategy to optimize power generation while maintaining system efficiency and reliability, noting that master-slave architectures, which is a well-known concept for controlling and regulating. The research group explained that using parallel inverters in PV systems is a strategy to optimize power generation while maintaining system efficiency and reliability, noting that master-slave architectures, which is a well-known concept for controlling and regulating. This document explains how to: Configure multiple slave inverters via a master inverter Copy regional and power control parameters using the LCD panel or with an SD card To configure multiple inverters from a master inverter, the inverter communication board firmware (CPU) version must be 3. 22xx or. Scientists in Czechia have proposed to use parallel inverters in PV systems to not only reduce instability, but also to increase power yield. PV string Inverter with a control system Image:. The simulation is able to treat the Master/Slave operation. 1 slave for one master and one slave, 2 slaves for one master and 2 slaves). In this mode, the. A control method of an off-grid master-slave solar inverter system includes powering on the off-grid master-slave solar inverter system; a controller controlling a first inverter and a second inverter to prepare to output pulses corresponding to a first series number and pulses corresponding to a. "In a solar power system, a master-slave configuration with a gateway switch is used to manage multiple inverters, allowing them to operate as a single, coordinated system.



Inverter master-slave control power



[Maximizing photovoltaic system power output with a master-slave](#)

This study proposes a master-slave control system for controlling parallel inverters connected to a PV system. The master inverter is connected to Energy Storage Devices (ESDs) and ...

[A Master-Slave Control in Grid-Connected Applications](#)

In this chapter, a novel hybrid voltage/current control scheme with low communication burden is introduced for series-type inverters in a decentralized manner. All the inverter units are ...



Master Slave Operation

Many big inverters in the MW range are indeed an assembly of units of 100 to 200 kW, which internally operate in Master/Slave mode. As "seen" from outside, this improves the efficiency curve (which has ...

[Improved master-slave voltage and active power control strategy for](#)

This paper presented an improved master-slave voltage and active power control strategy for multiple photovoltaic inverters. The master inverter operates under maximum power point tracking control ...



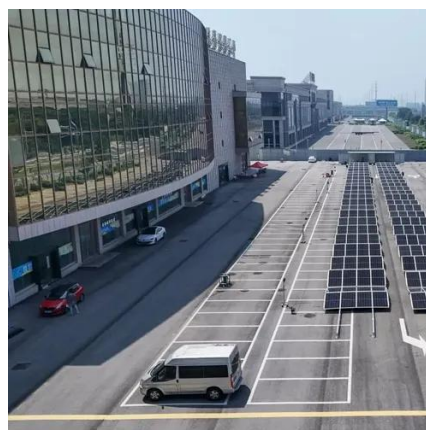
[Maximizing photovoltaic system power output with a master-slave](#)

Real-time analyses of active power curtailment, volt-watt control, frequency-watt control using smart PV inverters and their effects on voltage and frequency are presented in this paper.



[Configuring Multiple Slave Inverters via a Master Inverter](#)

RS485 bus configuration - up to 32 inverters connected on the same RS485 bus in a master/slave configuration. Only the master is physically connected to the internet through the Ethernet port.



[Master-slave technique for deploying parallel inverters in PV systems](#)

A group of scientists from the University of Hradec Kralove in Czechia has developed a master-slave control system for controlling parallel inverters connected to a PV system.



[Off-grid master-slave solar inverter system and method thereof](#)



Another embodiment provides an off-grid master-slave solar inverter system. The off-grid master-slave solar inverter system includes a first inverter, a second inverter, and a



[Master-slave technique for deploying parallel inverters in PV systems](#)

Through a series of simulations, the scientists found that the master inverter connected to the batteries was able to maintain constant system voltage and compensate for deficits in PV ...

[Understanding Master-Slave Inverter Configuration in Solar](#)

"In a solar power system, a master-slave configuration with a gateway switch is used to manage multiple inverters, allowing them to operate as a single, coordinated system.





Contact Us

For catalog requests, pricing, or partnerships, please visit:

<https://www.iwap.com.pl>

Phone: +34 919 456 782

Email: info@iwap.com.pl

Scan the QR code to access our WhatsApp.

