



Inverter voltage upper limit





Overview

NEMA MG 1-2011, Part 31, specifies that insulation systems for definite-purpose, low-voltage (≤ 600 V) inverter-duty motors should be designed to withstand an upper limit of 3.1 times the motor's rated line-to-line voltage. The inverter input electronics assumes the function of choosing the operating point on the I/V curve of the PV array. When attaining one of these limits, the inverter. The inverter uses a feedback voltage regulation, so I measure around 230V AC over all allowed input voltages. If incoming AC is above 132V, you'll get an error and your inverters will disconnect from grid.

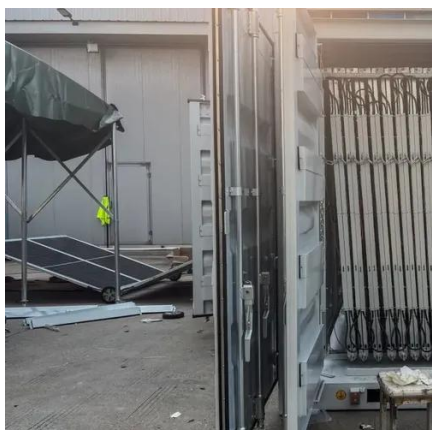


Inverter voltage upper limit



[SIZING THE MAXIMUM DC VOLTAGE OF PV SYSTEMS](#)

All components (modules, inverters, cables, connections, fuses, surge arrestors, .) have a certain maximum voltage they can withstand or handle safely. If this voltage gets exceeded, damage or even ...



[The Most Comprehensive Guide to Grid-Tied Inverter Parameters](#)

Also known as peak power, this is the maximum power value that the inverter can output for a very short period. Since this maximum power can only be maintained briefly, it does not hold significant ...

9. Inverter Settings

To set the voltage at which the inverter restarts after low voltage shut-down. - To prevent rapid fluctuation between shut-down and start up, it is recommended that this value be set at least one volt ...



Exceeding Inverter Limits

The general rule of thumb is that your inverter Max Input voltage must be greater than $V_{oc} \times 1.2$, otherwise the inverter will shut down (if you are very lucky) or fry (more likely).

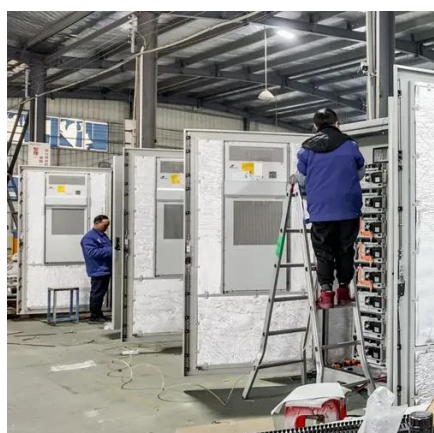


When Should Inverter-Duty Motors Be Specified?

NEMA MG 1-2011, Part 31, specifies that insulation systems for definite-purpose, low-voltage (≤ 600 V) inverter-duty motors should be designed to withstand an upper limit of 3.1 times the motor's rated ...

Inverter Operating Limits

In normal conditions it will choose the maximum power point (MPPT tracking). However there are limits in power, voltage and current. When attaining one of these limits, the inverter will clip the operating ...



Inverter voltage upper limit

If your inverters are operating in a different AC grid input mode your inverters shouldn't disconnect above 132V, but allow the higher voltage to pass through to your loads, up to whatever AC limit you've set.

Adjustment of sine voltage inverter: Upper input voltage limit



The inverter uses a feedback voltage regulation, so I measure around 230V AC over all allowed input voltages. If 16V are exceeded, the unit beeps and switches off due to overvoltage.

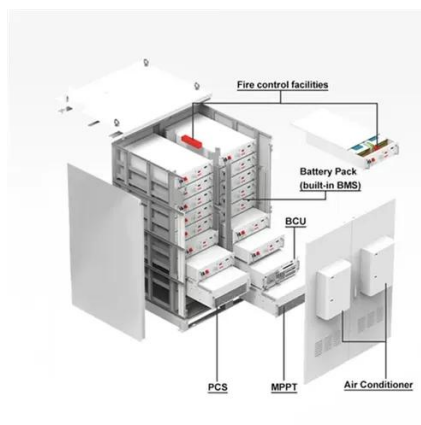


Understanding inverter voltage

Choosing the optimal inverter voltage depends on various factors, including the inverter's design, the power requirements of connected devices, and the available power source.

Voltage THD limits for three

In this study, the author raises an interesting issue related to the definition of voltage THD boundaries with upper and lower limits. The problem is reformulated, and a novel and more





Contact Us

For catalog requests, pricing, or partnerships, please visit:

<https://www.iwap.com.pl>

Phone: +34 919 456 782

Email: info@iwap.com.pl

Scan the QR code to access our WhatsApp.

