



# Is 3A normal for a 300W solar panel to charge





## Overview

---

For example, if one solar panel is rated at 300 watts, a single panel would be sufficient for devices needing up to 3 amps at 12 volts, assuming ideal solar conditions. However, in practice, factors such as shading, panel orientation, and angle can significantly affect actual. **Solar Panel Capacity:** A 300-watt solar panel, under optimal conditions, generates approximately 300 watts of energy, capable of charging batteries effectively based on their capacity (measured in amp-hours). **Battery Charging Time:** To fully charge a 12-volt, 100 Ah battery, around 1,200 watt-hours. Selecting the right size solar panel, charge controller, and wire size will allow you to recharge your 300Ah battery in desired hours. This is going to be a complete guide on charging a 300ah battery with solar panels. Using the formula:  $1200Wh \div 240W = 5$  hours (roughly). Of course, clouds, heat, or shade can slow your roll. A 100W solar panel generates about 5. For example, if a system.



## Is 3A normal for a 300W solar panel to charge



### [What size charge controller for a 300w solar panel?](#)

Get the right charge controller for your 300w solar panel setup. Learn what size to use in our expert guide.

### [Solar Panel Charging Time Calculator, SolarMathLab](#)

Accurately calculate how long your solar panel takes to charge a battery using panel wattage, voltage, capacity (Ah), efficiency, and daily sunlight hours. Fast, reliable solar charging time calculator.



### [How Many Amps Should My Solar Panel Put Out?](#)

Solar panel output is usually measured in watts, but what if you are charging a battery, or your power load consumption is in amp hours? In these instances it is important to understand how many amps ...



### [Charging 300Ah Battery: Everything You Need \(Solar Panel, Charge\)](#)

You'd need about 730 watts of solar panels to fully charge a 12v 300ah lithium (LiFePO4) battery from 100% depth of discharge in 6 peak sun hours using an MPPT charge controller.



### [How Many Solar Panel Watts for 12V Battery Charging: A Complete ...](#)

To charge a 12V battery with a capacity of 100 amp-hours in five hours, you need at least 240 watts from your solar panels (20 amps x 12 volts). A 300-watt solar panel or three 100-watt ...

### **300 Watt Solar Panel How Many Amps?**

If you have a 300-watt solar panel, the number of amps depends on your system's voltage: So, under ideal sunlight conditions, a 300-watt solar panel produces around 25 amps when ...



### [Charging 300Ah Battery: Everything You Need \(Solar Panel, Charge](#)

So here's the deal: figuring out how long your solar panel takes to charge a battery isn't rocket science. You just need the panel's wattage, the ...



### [What can a 300 watt solar panel run? , Renogy US](#)



By multiplying 20 amps by 12 volts, 240 watts is how big of a panel you would need, so we'd recommend using a 300w solar panel or three 100-watt solar panels. You'll still have your regular power demand ...

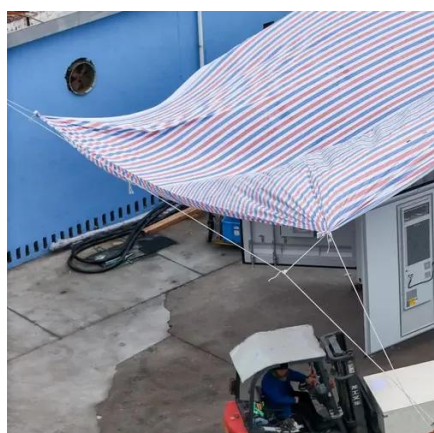


### [How Many Batteries Can a 300 Watt Solar Panel Charge for Optimal ...](#)

Discover how many batteries a 300-watt solar panel can charge in our comprehensive guide. Explore the factors affecting charging efficiency, optimal sun exposure, and battery types.

### [How to Calculate Charging Time of Battery by Solar Panel](#)

So here's the deal: figuring out how long your solar panel takes to charge a battery isn't rocket science. You just need the panel's wattage, the battery's capacity, and a pinch of sunlight.



### [How many W of solar energy is enough for 3A . NenPower](#)

For example, if one solar panel is rated at 300 watts, a single panel would be sufficient for devices needing up to 3 amps at 12 volts, assuming ideal solar conditions.



## Contact Us

---

For catalog requests, pricing, or partnerships, please visit:

<https://www.iwap.com.pl>

Phone: +34 919 456 782

Email: [info@iwap.com.pl](mailto:info@iwap.com.pl)

Scan the QR code to access our WhatsApp.

