



Is DC installation of IP66 battery cabinets convenient





Overview

Outdoor battery cabinets are an easy way to add a new DC system to older substations where room in the control house is limited. This allows for a back-up power source for control equipment and enables remote switching and recovery operations if AC control power is not. SBS designs and builds custom DC enclosures for battery systems and/or chargers. A typical cabinet integrates batteries, racking and chargers into an indoor (NEMA 1 or 12) or outdoor (NEMA 3R) rated enclosure. There are many different options and accessories available, making every system unique. Do not contact a battery terminal or exposed wire connected to a battery terminal. NEVER allow a metal object, such as a tool, to contact more than one termination or battery terminal at a time, or to simultaneously contact a termination or battery terminal and a grounded object. Always contact the battery manufacturer. When selecting electrical enclosures, one of the most critical specifications to consider is the IP (Ingress Protection) rating. Defined by the IEC 60529 standard, IP ratings tell you exactly how well a box guards against solids (like dust) and liquids (like water). The SlimLine Series cabinets are designed for outdoor or indoor projects and range in IP ratings from IP54 to IP66. The Slimline Range has a compact footprint which makes them ideal for smaller spaces.



Is DC installation of IP66 battery cabinets convenient

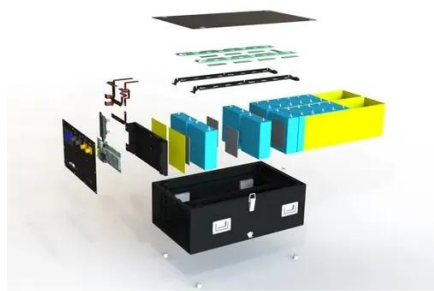


[IP Ratings & Outdoor Standards for Battery Packs](#)

Learn how IP ratings like IP65 and IP67 define battery pack protection and ensure safe, durable outdoor energy storage system performance.

[IP65 vs. IP66 vs. IP67: Which Enclosure Rating Do You Need? , E-abel](#)

Among the most common ratings you'll encounter are IP65, IP66, and IP67. This article breaks down what each of these ratings means, compares their protective capabilities, and shows ...

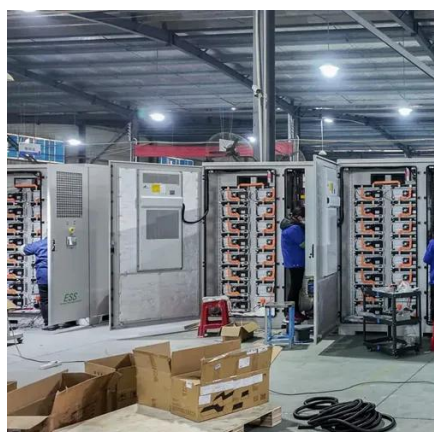


IP66 Enclosures

Our IP66 enclosures offer the highest protection against particles and a high level of protection against water. Following strict IP66 standard protection rating rules, these enclosures stringently adhere to ...

[Key Considerations for Installing a Lithium Battery Cabinet](#)

Before you can reap the benefits of these advanced systems, it's essential to consider several key factors related to the installation site. The first consideration is the physical space available for the ...



[Indoor and Outdoor Battery Cabinet Systems](#)

Outdoor battery cabinets are an easy way to add a new DC system to older substations where room in the control house is limited. This allows for a back-up power source for control equipment and ...

[-48 VDC Battery Cabinet Installation and User Manual \(Section ...](#)

subject to change without notice and may not be suitable for all applications. While every precaution has been taken to ensure the accuracy and completeness of this document, Vertiv assumes no ...



PowerPlus Energy 4x Battery Cabinet IP66

Easy-to-use plug & play design with integrated DC cables, DC Busbar & DC circuit breaker, allows easy installation of up to 4x LiFe or ECO P Series Lithium Ferro Phosphate Battery.



[Custom, Temperature-Regulating Battery Enclosures](#)



A typical cabinet integrates batteries, racking and chargers into an indoor (NEMA 1 or 12) or outdoor (NEMA 3R) rated enclosure. There are many different options and accessories available, making ...



Battery Cabinets & Racks

There are many different options and accessories available, making every system unique and built to your site-specific needs. They can be constructed with batteries, battery/charger combinations, and ...

PEW4 PowerPlus Battery Cabinet IP66

Designed and manufactured in Australia, the range brings a fresh modern look to energy storage. The easy-to-use plug and play design, with integrated DC cables, DC Busbar and DC circuit breaker ...





Contact Us

For catalog requests, pricing, or partnerships, please visit:

<https://www.iwap.com.pl>

Phone: +34 919 456 782

Email: info@iwap.com.pl

Scan the QR code to access our WhatsApp.

