



# Is the battery maintenance of Tbilisi communication base station ok





## Overview

---

If maintenance is unfortunate, the overall failure rate of the equipment will be very high, the power environment monitoring system lost utility, the operating cost is expensive, and the base station is not safe. Unmanned operation: Technicians may only visit sites for scheduled maintenance, making continuous battery reliability essential. Regulatory uptime requirements: Network operators must meet strict service-level agreements (SLAs). Cost of downtime: Power interruptions can disrupt large numbers of. Once installed in communication base stations, these batteries typically do not require replacement for several years. Standard storage methods are often inadequate for lithium-ion technology.



## Is the battery maintenance of Tbilisi communication base station ok



### [Battery maintenance requirements for communication base stations](#)

These stations depend on backup battery systems to maintain network availability during power disruptions. Backup batteries not only safeguard critical communications infrastructure but also ...

### [Selection and maintenance of batteries for communication base ...](#)

This paper focuses on the engineering application of battery in the power supply system of communication base stations, and focuses on the selection, installation and maintenance of battery ...



### [Overview of Telecom Base Station Batteries](#)

Against the development backdrop of the IoT, artificial intelligence and other technologies, the future base station batteries will embrace intelligent management to improve the efficiency and safety of ...

### [TBILISI NEW ENERGY BATTERY CABINET MAINTENANCE POINT](#)

Ideal for retail stores, restaurants, small factories, telecom base stations, and temporary event sites, these cabinets combine rugged protection (IP54), integrated inverters, and scalable rack-mounted ...



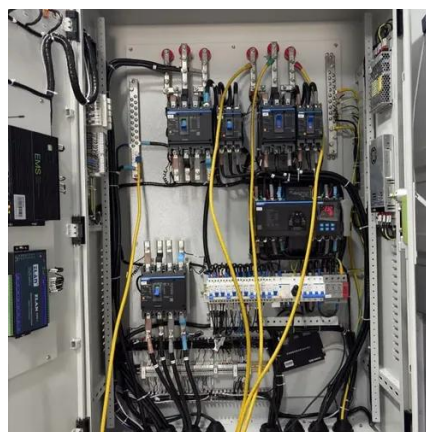
### [Communication Batteries: Why Telecom Base Stations Have Unique ...](#)

In modern telecom networks, ensuring uninterrupted connectivity is critical. The term "communication batteries" is often used ambiguously online, leading to confusion among operators, ...



### [Main Causes of Shortened Battery Lifespan in Base Stations](#)

Once installed in communication base stations, these batteries typically do not require replacement for several years. Therefore, it is crucial to enhance battery maintenance to improve its ...



### [Battery Management Systems for Telecom Base Backup Batteries](#)

Backup batteries ensure that telecom base stations remain operational even during extended power outages. With increasing demand for reliable data connectivity and the critical ...



### [Mobile communication base station power supply equipment ...](#)

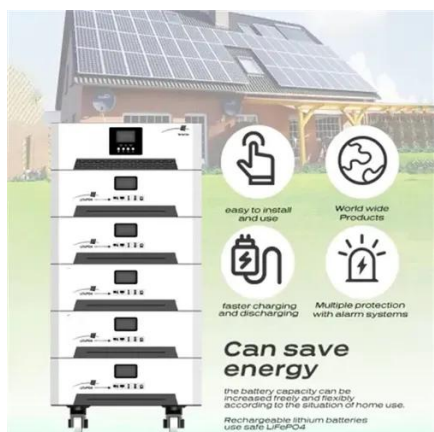


Improper use of the battery will directly affect the battery life and service life, especially the base station battery is larger, and should pay more attention to its choice.



### Tbilisi solar container communication station Battery Control Screen

A BESS container is a self-contained unit that houses the various components of an energy storage system, including the battery modules, power electronics, and control



### Tbilisi energy storage chassis shell maintenance

??????? ?????? . Tbilisi Energy & quot; hosted the & quot;Blood Center& quot; for a donation event. 08 February 2024 ; A private company damaged the gas pipeline of Tbilisi Energy. ...





## Contact Us

---

For catalog requests, pricing, or partnerships, please visit:

<https://www.iwap.com.pl>

Phone: +34 919 456 782

Email: [info@iwap.com.pl](mailto:info@iwap.com.pl)

Scan the QR code to access our WhatsApp.

