



Is the energy storage cabinet battery a dc battery





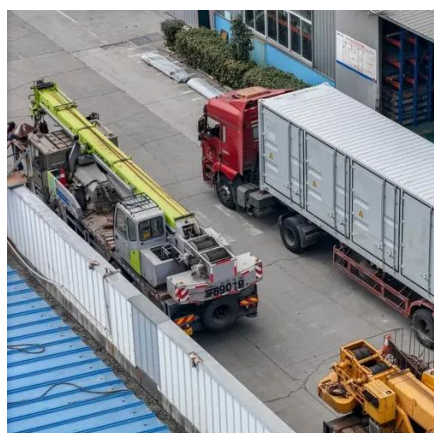
Overview

Let's cut to the chase - most energy storage devices primarily use DC (direct current) for storing electricity, while the power grid and your home appliances dance to the rhythm of AC (alternating current). But why does this electrical tango matter?

. A BESS cabinet (Battery Energy Storage System cabinet) is no longer just a "battery box. integrates with solar and wind systems, 3. Energy storage. DC voltage up to 1200Vdc Max. installed capacity up to 220kWh per cabinet Scalable and flexible configuration IP55 stainless enclosure with corrosion resistant painting Built-in battery management system, HVAC, and automatic fire suppression system Certification: cell level - UN38. 3, IEC 62619. By definition, a battery energy storage system (BESS) is an electrochemical apparatus that uses a battery to store and distribute electricity.



Is the energy storage cabinet battery a dc battery



[Does the Energy Storage Device Use DC or AC? The Shocking Truth](#)

Let's cut to the chase - most energy storage devices primarily use DC (direct current) for storing electricity, while the power grid and your home appliances dance to the rhythm of AC ...

Battery Energy Storage System Components

BESS batteries store and deliver DC power, while most loads use AC, requiring a Power Conversion System (PCS) or hybrid inverter. These bidirectional devices convert DC to AC for loads or the grid ...

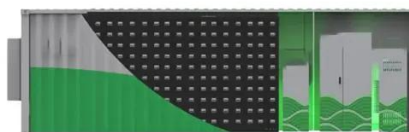


ESS_Leaflet_BSO-CS_EN_20210802

Delta's Li-battery storage system features high-voltage for enhancing the efficiency of energy management.

[Energy Storage Cabinet: What It Is, How It Works, and Why It Matters](#)

An energy storage cabinet stores electrical energy, then supplies it during outages, high-demand periods, or times when electricity prices peak. Most systems rely on lithium-ion batteries ...



[AN INTRODUCTION TO BATTERY ENERGY STORAGE](#)

The direct current (DC) output of battery energy storage systems must be converted to alternating current (AC) before it can travel through most transmission and distribution networks.

Energy storage cabinet

With its integration of high-performance batteries, the Energy Cabinet guarantees unparalleled reliability and efficiency, meeting the most rigorous industrial standards.



What is a DC energy storage cabinet

A DC energy storage cabinet is a specialized unit designed to store direct current (DC) electricity for various applications, particularly in renewable energy systems.



[Differences Between Energy Storage Systems . Anza](#)



Take a closer look at the differences between AC- and DC-integrated energy storage systems and how Anza makes it easier to compare options.



[Energy Storage Battery Cabinet Function Points: Key Applications and](#)

Summary: Energy storage battery cabinets are revolutionizing industries like renewable energy, grid management, and transportation. This article explores their core functions, real-world applications, ...

BESS CABINET

A BESS cabinet (Battery Energy Storage System cabinet) is no longer just a "battery box." In modern commercial and industrial (C& I) projects, it is a full energy asset --designed to reduce electricity ...





Contact Us

For catalog requests, pricing, or partnerships, please visit:

<https://www.iwap.com.pl>

Phone: +34 919 456 782

Email: info@iwap.com.pl

Scan the QR code to access our WhatsApp.

