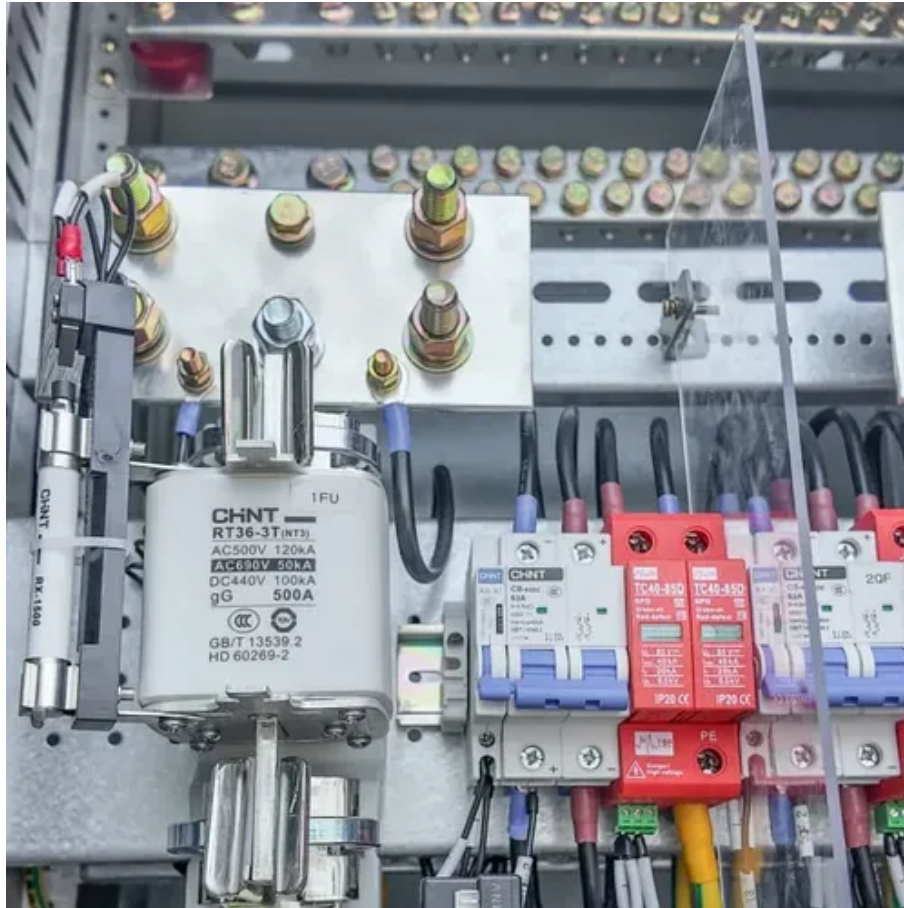




# Is the lightning to the communication base station





## Overview

---

A direct hit of lightning or damage to GSM and base stations through electromagnetic surges can cause interruptions in communication networks and damage to devices. Especially for emergencies, commercial transactions and daily communication, these structures must be in constant active. Thunderstorms pose a severe threat to mobile communication base stations, which are often deployed in high-altitude, open, or exposed environments. This includes using lightning rods, down conductors, grounding systems, surge protection devices (SPDs), and ensuring proper bonding and. A lightning arrestor (often referred to as a lightning protector or surge arrestor) is a protective device installed in a transmission line or power system.



## Is the lightning to the communication base station



### [Lightning protection issues of communication base stations](#)

Multiple pathways such as direct lightning strikes and lightning intrusion are unsafe factors for base stations in thunderstorm weather. Solving the lightning protection problem of communication base ...

### [How to Safeguard Mobile Base Stations from Lightning?](#)

Thunderstorms pose a severe threat to mobile communication base stations, which are often deployed in high-altitude, open, or exposed environments. A single lightning strike can damage critical telecom ...



### [LIGHTNING PROTECTION SOLUTION FOR BASE STATION](#)

To properly protect the power line of a base station, the line entering the building should use a cable with metal cladding, buried underground. Both ends of the cladding should be grounded.

### [Lightning introduction pathways and protection measures for](#)

When overhead pipelines are struck by lightning, overvoltage is introduced into the base station room, which is likely to burn out the communication equipment of the base station.



### Communication Network GSM-Base Stations and Lightning Effect

A direct hit of lightning or damage to GSM and base stations through electromagnetic surges can cause interruptions in communication networks and damage to devices.



### How Are Base Stations Protected Against Lightning?

In base station lightning protection design, the grounding grid and ground busbars are key components. With proper design, they can effectively reduce the impact of lightning on the station.



### Lightning and Surge Protection for Communication Station

Install lightning rods, grounding, surge protectors, shielding, and follow standards for effective communication station protection.



### Communication Base Station Lightning Arrestor, Huijue Group E-Site



The next-generation communication base station lightning arrester won't just absorb energy - it will intelligently route, convert, and even harvest surge currents.



### [Lightning protection solution for telecom communication base stations](#)

The lightning arrester for the RuTian feeder is installed at the connection between the antenna and the feeder to prevent lightning from entering the main equipment of the base station ...

### [Where Should a Lightning Arrester Be Installed? A Guide for Safer ...](#)

If you're unsure what to use, the experts at Unicom Radio offer a curated selection of high-quality lightning arrestors and grounding accessories tailored to amateur radio, base stations, and antenna ...





## Contact Us

---

For catalog requests, pricing, or partnerships, please visit:

<https://www.iwap.com.pl>

Phone: +34 919 456 782

Email: [info@iwap.com.pl](mailto:info@iwap.com.pl)

Scan the QR code to access our WhatsApp.

