



# Is there solar power in this area





## Overview

---

Availability varies by utility service area. Yes, if there are active community solar farms in your area, you're eligible to subscribe. Welcome to Global Solar Atlas v2. Select sites, draw rectangles or polygons by clicking the respective map controls. If you do not. Learn about solar energy in your local area and discover what solar power options might be available in your community. Project Sunroof is a solar calculator from Google that helps you map your roof's solar. If active in your area, most residents and businesses can subscribe to community solar.



## Is there solar power in this area

---



### Solar potential by Zip Code

Compare the solar potential of your zip code to others. Factors in weather and latitude and gives you stats for unshaded solar potential.

### [Are there solar farms near me, and who is eligible to get electricity](#)

Yes, if there are active community solar farms in your area, you're eligible to subscribe. Look at SunCentral's map to see where we have community solar farms or check your utility company's ...



### Map of Solar Panel Locations Near You

View the map of solar panel locations near you: solar farms, solar communities, solar parking lots, solar schools, solar roofs on buildings.

### [Solar Energy Data and Resources in the U.S., Solar ...](#)

Learn about solar power in your city and state. View local solar energy data and get advice on how to utilize solar panels as a power source.

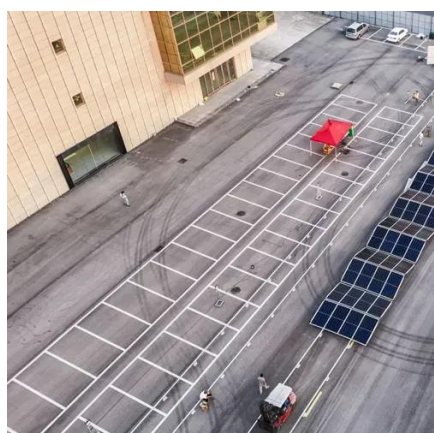


[These maps show exactly where we need to put solar panels, wind](#)

Called the Geospatial Energy Mapper, or GEM, the interactive tool contains more than 190 different mapping layers, so a user can search areas for EV charging stations, solar power ...

### **Project Sunroof**

Search for a city, state, or zip code to see solar potential and impact across entire geographic areas. We currently have solar data for portions of 50 states and Washington DC.



### **Global Solar Atlas**

Welcome to the Global Solar Atlas. Start exploring solar potential by clicking on the map. Select sites, draw rectangles or polygons by clicking the respective map controls. Calculate energy production for ...

### **Project Sunroof**



Enter a state, county, city, or zip code to see a solar estimate for the area, based on the amount of usable sunlight and roof space.



[Solar Panel Placement Map \(Get Potential Map\)](#)

Just enter your address, and Google will show you a map of your area with the potential for solar panels. The map takes into account the amount of sunlight that hits your location, as well as ...



**Solar-Estimate**

Uses local climate data, your roof measurements, current local electric rates and current solar system cost to generate an accurate solar cost and savings estimate, customized for your home.

**ESS**



[Solar Panel Placement Map \(Get Potential Map\)](#)



Solar Potential Map by AddressGoogle  
SunroofProject SunroofSolar PanelsGoogle Sunroof  
APIWhere Should Solar Panels Be  
Positioned?Frequently Asked QuestionWrap UpThe  
Solar Potential Map by Address is a tool that allows you to input your address and find out the potential for solar energy production at your location. The National Renewable Energy Laboratory (NREL) created the map and provided data on rooftops across the United States. The map is based on several factors, including roof size, orientation, til See more on poweringsolution



solarenergymaps

## **Map of Solar Panel Locations Near You**

View the map of solar panel locations near you:  
solar farms, solar communities, solar parking lots,  
solar schools, solar roofs on buildings.



## Contact Us

---

For catalog requests, pricing, or partnerships, please visit:

<https://www.iwap.com.pl>

Phone: +34 919 456 782

Email: [info@iwap.com.pl](mailto:info@iwap.com.pl)

Scan the QR code to access our WhatsApp.

