



Level 1 charger amps





Level 1 charger amps



[Level 1 vs. Level 2 vs. Level 3 Charging Explained](#)

Every EV comes with a free L1 charge cable. It's universally compatible, doesn't cost anything to install, and plugs into any standard grounded 120-V outlet. Depending on the price of ...

[Finding the Best Level 1 EV Chargers for Your Electric Vehicle](#)

Amperage: Typically ranges between 12A and 16A, affecting charging speed. Power Output: Provides between 1.2 kW and 1.9 kW, sufficient for slow, steady charging. Charging Speed: ...



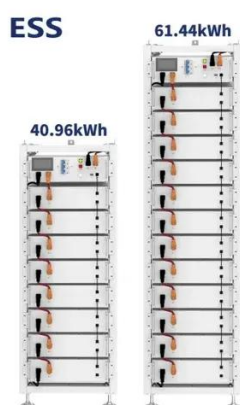
[Level 1, Level 2, Level 3 Charging: Differences, Benefits, Mazda USA](#)

Level 1 charging is EV charging at its most basic and accessible. To use Level 1 charging, all you need to do is plug a charging cable into the standard, grounded 120V wall outlets found in most U.S. ...



Level 1 Charging Guide

Discover the basics of Level 1 EV charging, its mechanism, speed, cables, and how to choose the best charger for your electric vehicle.



[Level 1 vs. Level 2 vs. Level 3 Charging Explained](#)

What Are Ev Charging Levels, Anyway? Level 1 Charging Explained Level 2 Charging Explained Level 3 Charging Explained A Final Plug About Chargers Charging levels L1, L2, and L3 are three general terms that refer to how fast you can charge your EV battery. Think of charging your EV like filling up a pool. You probably wouldn't use a fire hose to fill a kiddie pool or a standard garden hose to fill an inground pool. Recharging an EV is kind of like that: It can take minutes to days, depending See more on lifewire kevinautos

How many amps does a Level 1 EV charger use? - kevinautos

How many amps does a Level 1 EV charger use? A Level 1 electric vehicle (EV) charger typically uses 120 volts and 12-16 amps of current, providing a charging rate of around 1.4 to 1.9 kilowatts (kW).

[How many amps does a Level 1 EV charger use?](#)

How many amps does a Level 1 EV charger use? A Level 1 electric vehicle (EV) charger typically uses 120 volts and 12-16 amps of current, providing a charging rate of around 1.4 to 1.9 kilowatts (kW).



[Charging Your EV at Home: Safe and Simple with](#)

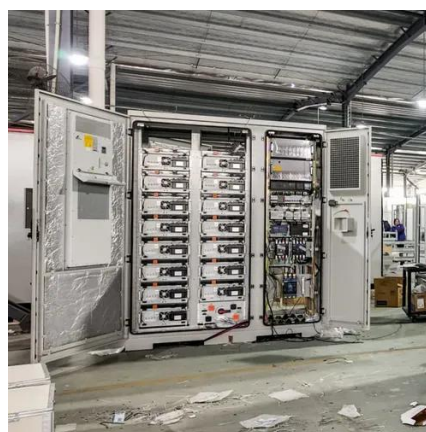


Level 1

For many EV owners, charging at home with a standard 15-amp outlet--known as Level 1 charging--is all they need. If you typically drive 10-15 miles a day and have the ability to plug in ...

How Many Amps Does an Electric Car Charger Draw?

In most cases, a level 1 EV charger amps will suit 15 or 20 amps single-pole circuit breakers. At the same time, level 2 chargers might require a minimum of 50 amps for fault protection ...



Your Guide to EV Charger Amperage

EV charging is categorized into three main levels, each with a different typical amperage and voltage: A Level 1 EV charger uses a 120-volt AC outlet and typically draws 12 to 16 amps, ...

Understanding Level 1 EV Charger Amps: A Complete Guide

With Level 1 chargers, the typical amperage is around 12 to 16 amps. This characteristic plays a significant role in determining how quickly a vehicle can be charged.



EV Charging Levels Explained for the New or Future EV Owner



Level 1 alone won't be enough to keep up with the charging needs of most EV owners. That said if you only drive 20 miles or so each day, you may be able to get by using only a Level 1



Contact Us

For catalog requests, pricing, or partnerships, please visit:

<https://www.iwap.com.pl>

Phone: +34 919 456 782

Email: info@iwap.com.pl

Scan the QR code to access our WhatsApp.

