



Limiting solar panel power generation





Overview

They play a pivotal role in optimizing power generation and ensuring efficient utilization of solar energy. In this article, we'll see how a grid tie inverter with a limiter works. The sun offers abundant energy, yet integrating this power into existing grids presents challenges, especially concerning excess generation. 5kW, the inverter's. The use of solar energy for self-consumption has many advantages: reducing a site's carbon footprint, the decrease in energy costs, or the possibility of reselling this energy to the national grid when local regulations allow it.



Limiting solar panel power generation



Power limitation and zero export

Solar panels are directly connected to the grid through inverters; the energy produced is transmitted to the site for self-consumption or is returned to the grid. However, in some countries, ...

[Best Grid Tie Inverter With Limiter: How It Works](#)

Grid tie inverters with limiters are crucial components in modern renewable energy systems. They play a pivotal role in optimizing power generation and ensuring efficient utilization of ...



[Blueprint for export limits: hybrid inverters, MLPE, control](#)

Hybrid inverters are central to managing solar power effectively, especially under export limits. They intelligently direct the flow of electricity from your solar panels to your home's loads, to a ...

[Export Limiting -- Why Some Solar Systems Must Restrict Output](#)

Export limiting is a control method used in grid-connected solar systems to restrict the amount of electricity exported from an inverter to the utility grid.



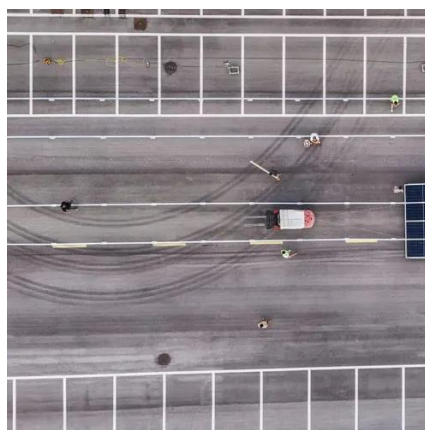
Solar Export Limit

There are no limits on how much electricity you can generate, only limits on what you can export to the grid. We explain how solar export limits work. A typical solar panel system works by powering your ...



How does a solar export limiter work?

It will (if properly configured) limit exports to the grid to 3.5kW. A solar export limiter uses a little sensor called a 'current transformer' to constantly monitor how much power is flowing out the to grid: If the ...



Export Limiter , How it works

In many countries, state electricity companies have limits on the power exported to the grid from a small grid-tied power plant. In these countries, export limiting devices are used to limit the ...

What is solar curtailment? - gridX



One way to avoid curtailment is to extend grid infrastructure so that more electricity can be transported at any one time. Grid expansion, however, takes a lot of time and money. Other clean ...



- LiFePO₄
- Wide temp: -20°C to 55°C
- Easy to expand
- Floor mount&wall mount
- Intelligent BMS
- Cycle Life:≥6000
- Warranty :10 years



[What is the power-limiting solar panel equipment? .NenPower](#)

Power-limiting technology in solar panels is integral to managing the energy generation processes more efficiently. As solar energy becomes a primary focus in renewable energy initiatives, ...

[Export Limitation & Metering Solution . SolarEdge](#)

SolarEdge offers an export limitation option, integrated in the SolarEdge inverter firmware, which dynamically adjusts PV power production. This allows you to use more energy for self-consumption ...





Contact Us

For catalog requests, pricing, or partnerships, please visit:

<https://www.iwap.com.pl>

Phone: +34 919 456 782

Email: info@iwap.com.pl

Scan the QR code to access our WhatsApp.

