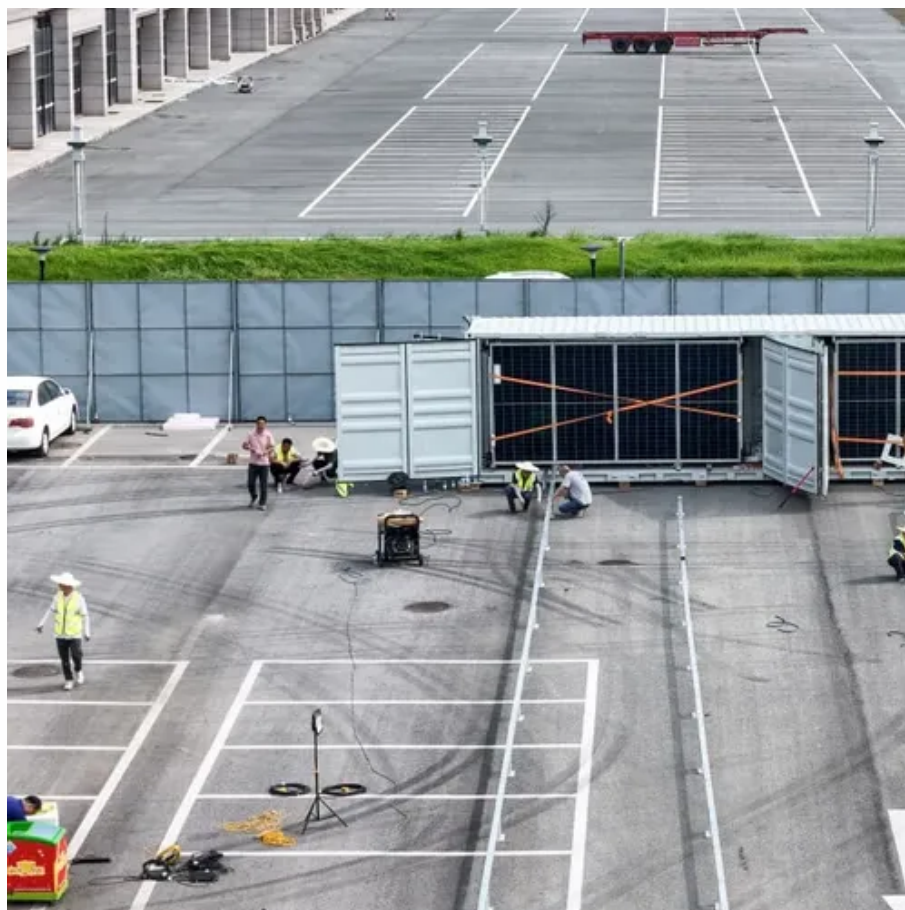


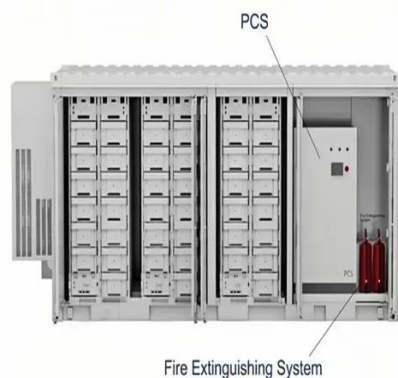


# Lithium iron phosphate battery station cabinet connection method





## Lithium iron phosphate battery station cabinet connection method

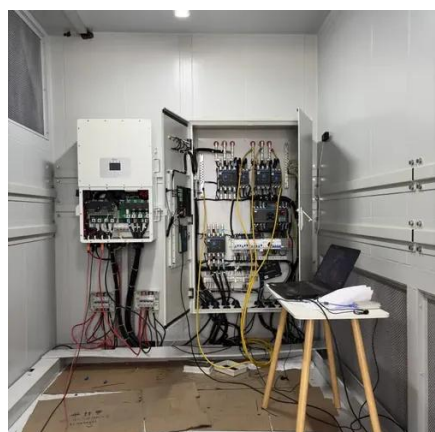


### [Lithium Battery Wiring: Ensure Reliable Power](#)

Step-by-step lithium battery wiring for safe series, parallel, and series-parallel banks. Build 48V from 12V, size cables and fuses, cut heat, and commission.

### [Can rack mounted lithium iron phosphate batteries be connected in](#)

One of the most frequently asked questions is whether rack-mounted LiFePO4 batteries can be connected in series or parallel. In this blog post, I will delve into this topic, exploring the ...



### **LiFePO4 Battery Building**

Flip the pack over and spot weld the two packs together using the center two cells to create a 4S pack. Follow your BMS's wiring diagram. Remember you have a live battery pack and can easily cause a ...

### [How to Build a LiFePO4 Battery Pack: DIY Guide & Wiring Diagrams ...](#)

Whether you're powering a solar setup, campervan, or DIY project, this guide reveals how to assemble a LiFePO4 battery pack optimized for performance, safety, and Google-ranking clarity. Before building, ...



### [GP-LiFePO4-100 / Lithium Batteries \(LiFePO4\) / ...](#)

Find wiring instructions for lithium batteries with tips on secure connections and parallel connection notes.



### [LiFePO4 Battery Installation & Wiring Guide: Step-by-Step](#)

Learn how to safely install and configure your LiFePO4 battery system. This complete guide covers wiring, parallel/series connections, safety, and troubleshooting.



- ✓ TELECOM CABINET
- ✓ BRAND NEW ORIGINAL
- ✓ HIGH-EFFICIENCY

### [Lithium Series, Parallel and Series and Parallel](#)

Each lithium battery in the bank is a 51.2Vn 30AH lithium battery with a BMS capable of managing 30A of continuous charge or discharge current. By connecting 4 x 51.2V 30AH batteries in parallel each ...



### [Efficient Ways to Connect Lifepo4 Batteries in Parallel](#)



Each method has its own advantages and disadvantages, but understanding how they work together can help you make an informed decision regarding your connection type.



### [Lithium iron phosphate battery station cabinets in parallel](#)

By using the parallel connection method, the battery capacity can be effectively increased, the power supply time can be prolonged, and the flexibility and redundancy of the



### [Lithium Series, Parallel and Series and Parallel](#)

Step-by-step lithium battery wiring for safe series, parallel, and series-parallel banks. Build 48V from 12V, size cables and fuses, cut ...



### **USER MANUAL**

DO NOT connect or disconnect terminals from the battery without disconnecting loads. DO NOT place any objects on top of the battery. DO NOT wear jewelry or other metal objects when working on or ...



## Contact Us

---

For catalog requests, pricing, or partnerships, please visit:

<https://www.iwap.com.pl>

Phone: +34 919 456 782

Email: [info@iwap.com.pl](mailto:info@iwap.com.pl)

Scan the QR code to access our WhatsApp.

