



# Load standards for photovoltaic panels on roofs





## Overview

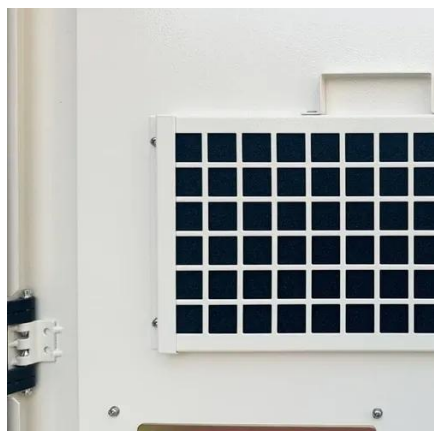
---

The maximum roof load capacity often specified for solar panel installations is about 40 to 60 lbs per square foot. Reliable testing and proper insulation can boost the roof's integrity. Key standards like the American Society of Civil Engineers (ASCE) 7 and the European Eurocodes are evolving to address the unique challenges PV arrays present to building structures. The upcoming code shifts, particularly those reflected in the widely adopted ASCE 7-22, set the stage for what to. Find out how the ASCE 7 standard affects wind load, seismic load, and tornado load considerations for solar photovoltaic (PV) systems. Every solar installer faces this critical question: can the roof handle the weight?

When engineers analyze structural capacity, they examine four essential load types that ensure. Learn more about all you need to know about roof loads, load capacities and how they determine if a roof can support the weight of solar panels. ©2014-2025 Factory Mutual Insurance Company. No part of this document may be reproduced, stored in a retrieval system, or transmitted, in whole or in part, in any form or by any. t Guidelines (the Guidelines), also called “Step 1: Structural PV Array Mounting Requirements Checklist” (the “Checklist”). It describes the structural engineering principles and assumptions behind the Guidelines Checklist and delineates how the document conforms to the Internati t is to provide.



## Load standards for photovoltaic panels on roofs



### Roof-Mounted Solar PV Panels

Therefore, both the IRC and IBC state that the loads imposed by the PV panels on the roof must be considered and the new or existing framing must be capable of supporting this loading, ...

### [Roof Load Calculations for Solar: Engineer's Guide 2026](#)

Roof Load Calculations for Solar: Building Code Compliance Is Non-Negotiable Recent International Building Code editions (2015 IBC and 2018 IBC) include specific solar requirements. The code ...



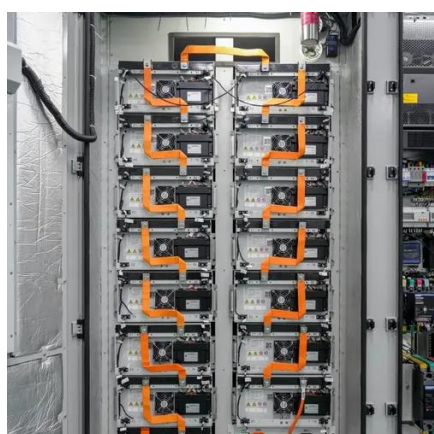
### [Understanding Structural Engineering Requirements For Rooftop ...](#)

Complete guide to structural requirements for rooftop solar panels. Assess load capacity, choose mounting systems, and ensure building code compliance.



### [DS 1-15 Roof-Mounted Solar Photovoltaic Panels \(Data Sheet\)](#)

Do not install PV panels over multi-ply roof covers, regardless of FM Approval or the presence of mineral surfacing, roof gravel or roof coatings, due to the amount of available fuel in the roof covering.



### [2025 code shifts: ASCE 7 and Eurocode rules for PV ...](#)

Stay ahead of 2025 code changes. Master the new ASCE 7 & Eurocode rules for PV roof loads to ensure safe, compliant solar installations.

### [Understanding Roof Load Capacity for Solar Panels](#)

Building codes generally require that a roof has a minimum live load capacity of 20 pounds per square foot. This is in addition to the capacity required to support the dead load.



### [Roof Load Distribution Calculations for Solar Panel Structural Safety](#)

Roof load distribution calculations for solar panel structural safety are essential for ensuring your solar energy system remains secure and effective. Understanding how to accurately ...

### [Detailed Structural Commentary for Rooftop PV Arrays for the ...](#)



Washington reports on the aftermath of a heavy snow load event where 57 roofs were damaged, but only two partial collapses occurred. Snow loads, with ongoing downward pressures that can drive a roof ...



 LFP 48V 100Ah

### [Updates on ASCE 7 Standard for Solar PV Systems](#)

ASCE 7-16 For PV Systems  
Changes in ASCE 7-22  
Code Development Issues  
Informational Resources  
The 2016 edition of ASCE 7 has been in effect for about three years. It has three more years remaining before the standard is superseded by ASCE 7-22. ASCE 7-16 introduced substantial increases in the component and cladding pressure coefficients used to calculate wind pressure in various wind zones. This change had a big impact on rooftop...  
See more on sustainable energy action  
Missing: roofs  
Must include: roofs

### **Videos of Load Standards For Photovoltaic Panels On Roofs**

Watch video 10:05 Solar Structure Design Calculations | Roof Top Solar Structure Design I Design Safety & Testing Sustainable Structure 8.8K views Nov 30, 2022  
Watch video 7:09 Roof Top Solar Structure Design and Calculation | Roof Top Solar Structure Step by Step Design Kre Sustainable Structure 6.5K views Dec 17, 2022  
Watch video 14:28 Solar Load Calculations: Build Wind-Resistant Structures Analysis & Design Studio 14.9K views Mar 1, 2024  
Watch full video energyscaperenewables

### **Roof Load Calculations for Solar: Engineer's Guide 2026**

Roof Load Calculations for Solar: Building Code Compliance Is Non-Negotiable  
Recent International Building Code editions (2015 IBC and 2018 IBC) include specific solar requirements. The code ...



## [Structural Requirements for Solar Panels -- Exactus Energy](#)

This comprehensive guide outlines the structural requirements for solar panels and provides an overview on the inner workings of the installation process.



## [Updates on ASCE 7 Standard for Solar PV Systems](#)

Find out how the ASCE 7 standard affects wind load, seismic load, and tornado load considerations for solar photovoltaic (PV) systems.



- IP65/IP55 OUTDOOR CABINET
- OUTDOOR MODULE CABINET
- OUTDOOR ENERGY STORAGE CABINET
- 19 INCH



## Contact Us

---

For catalog requests, pricing, or partnerships, please visit:

<https://www.iwap.com.pl>

Phone: +34 919 456 782

Email: [info@iwap.com.pl](mailto:info@iwap.com.pl)

Scan the QR code to access our WhatsApp.

