



Longi 620 photovoltaic panel size specifications





Overview

Meta Description: Discover the game-changing specs of Longi's 620W solar panel. We break down voltage ratings, temperature coefficients, and real-world performance data to help you optimize renewable energy systems. Contains technical tables and installation insights. (20240511 V2)DG . Hi-MO 7 is LONGi's latest generation of high-efficiency modules designed for the utility market. The module uses SMBB welding technology including LR5 72HGD (2278mm*1134mm) and LR7 72HGD (2382mm*1134mm) two types product. Hi-MO 7 boasts excellent power generation performance and product. Note: Your Enquiry will be sent directly to TN Solar Co. Designed to pair seamlessly with string inverters or microinverters, this advanced bifacial module utilizes cutting-edge monocrystalline PERC. The Longi 620W Bifacial Double Glass Solar Panel is a high-performance photovoltaic module designed for utility-scale, commercial, and industrial solar installations.



Longi 620 photovoltaic panel size specifications



Longi Hi-Mo 7 620W Solar Panel

The LONGi 620W High-Performance Bifacial Solar Panel is engineered to deliver exceptional power output and efficiency for utility-scale solar installations. Using advanced HPDC cell technology, this ...

[620w photovoltaic panel specifications and dimensions](#)

The most important solar panel specifications include the short-circuit current, the open-circuit voltage, the output voltage, current, and rated power at 1,000 W/m² solar radiation, all



[Longi 620W Photovoltaic Panel: Technical Parameters Decoded for ...](#)

Meta Description: Discover the game-changing specs of Longi's 620W solar panel. We break down voltage ratings, temperature coefficients, and real-world performance data to help you ...

LONGi-Downloads

LONGi provides you with the most comprehensive product data information so that you can quickly understand LONGi's full range of products.



[LR7-72HTH 605-630M\(30-30&15Frame\)-Scientist-20240511 V2](#)

620~630M Suitable for Distribution Market Simple design embodies modern style Highest efficiency with the best energy generation performance Better product warranty, better service



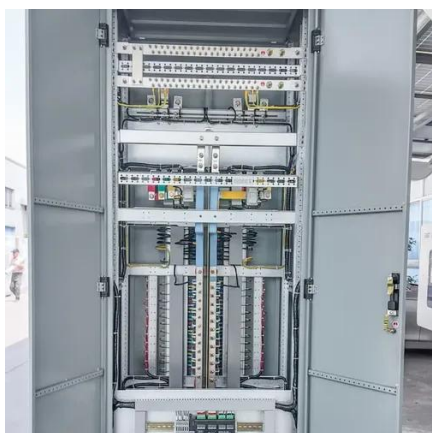
[Longi 615-620 Watt Hi-Mo 7 Bifacial Solar Panel](#)

Hi-MO 7 is LONGi's latest generation of high-efficiency modules designed for the utility market. The module uses SMBB welding technology including LR5 72HGD (2278mm*1134mm) and LR7 72HGD ...



[Solar panel 620W LONGI Solar Hi-MO 7 LR8-66HGD-620M Bifacial](#)

The Hi-MO 7 LR8-66HGD-620M is the company's latest innovation that combines bifacial technology with high output power of 620W. This panel absorbs sunlight from both sides, increasing energy ...

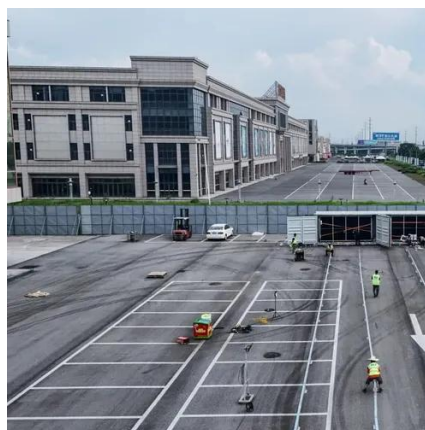


[Solar panel 620W LONGI Solar Hi-MO 7 LR8-66HGD](#)

...



The Hi-MO 7 LR8-66HGD-620M is the company's latest innovation that ...



[Longi Hi MO-7 620W Bifacial Double Glass Solar Panel](#)

The Longi 620W Bifacial Double Glass Solar Panel is a high-performance photovoltaic module designed for utility-scale, commercial, and industrial solar installations.



[LONGi Solar , Roof 4.0 LGi7-72HTD 600-620M , Solar ...](#)

Detailed profile including pictures, certification details and manufacturer PDF.





Contact Us

For catalog requests, pricing, or partnerships, please visit:

<https://www.iwap.com.pl>

Phone: +34 919 456 782

Email: info@iwap.com.pl

Scan the QR code to access our WhatsApp.

