



Minimum drop in building energy storage power station



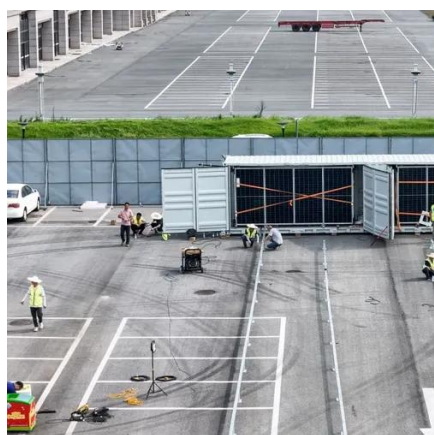


Overview

To build a micro-hydropower system, you need access to flowing water on your property. A sufficient quantity of falling water must be available, which usually, but not always, means that hilly or mountainous sites are best. A battery energy storage system (BESS) is an electrochemical device that charges (or collects energy) from the grid or a power plant and then discharges that energy at a later time to. Electrical engineers must learn to navigate industry codes and standards while designing battery energy storage systems (BESS) Understand the key differences and applications battery energy storage system (BESS) in buildings. Learn to navigate industry codes and standards for BESS design. Develop. The function of the electric power distribution system in a building or an installation site is to receive power at one or more supply points and to deliver it to the lighting loads, motors and all other electrically operated devices. These provisions apply to: Power generation, transmission, and distribution installations, including related equipment for the purpose of. This guide enables its readers to assess electrical load of a building and thus enabling to find out the required capacity of the switchgear, transformers etc. It deals with 33 kV/11 kV, 33 kV/0. 433 kV substations and includes HV panels, transformers, bus ducting, LV panels.



Minimum drop in building energy storage power station



[Grid-Scale Battery Storage: Frequently Asked Questions](#)

Is grid-scale battery storage needed for renewable energy integration? Battery storage is one of several technology options that can enhance power system flexibility and enable high levels of renewable ...

[Battery energy storage system size determination in renewable energy](#)

Numerous studies have been performed to optimise battery sizing for different renewable energy systems using a range of criteria and methods. This paper provides a comprehensive review ...



Battery Energy Storage Systems Report

Common Digital and Communication Features in BESS and Power Electronics: Risk vs. Benefit .. 54 Communications and ...

[GRID CONNECTED PV SYSTEMS WITH BATTERY ENERGY ...](#)

.13 1. Introduction This guideline provides an overview of the formulas and processes undertaken when designing (or sizing) a Battery Energy Storage System ...

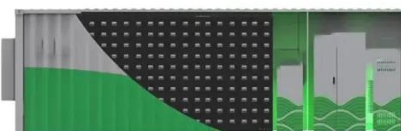


[Comprehensive review of energy storage systems technologies, ...](#)

Hybrid energy storage system challenges and solutions introduced by published research are summarized and analyzed. A selection criteria for energy storage systems is presented to ...

1910.269

The minimum approach distances specified in this section corresponding to the voltages to which the employee will be exposed and the skills and techniques necessary to maintain those distances.



[Understand the codes, standards for battery energy storage systems](#)

Understand the key differences and applications battery energy storage system (BESS) in buildings. Learn to navigate industry codes and standards for BESS design.



[Design guidelines for substation and power distribution systems](#)



The main objective of a modern modern power distribution system is to provide quality and uninterrupted power supply to the building so that there is no disruption to the productive ...

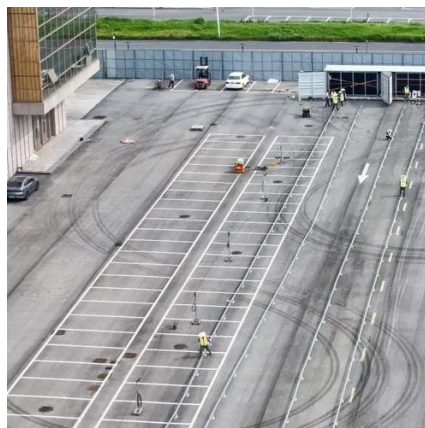


Power Distribution Systems

Energy storage systems (ESS) are now making renewable energy a more viable option by helping to stabilize power output during transient dips or interruptions to power production.

[Planning a Microhydropower System , Department of Energy](#)

A vertical drop of less than 2 feet (0.6 meters) will probably make a small-scale hydroelectric system unfeasible. However, for extremely small power generation amounts, a flowing stream with as little as ...





Contact Us

For catalog requests, pricing, or partnerships, please visit:

<https://www.iwap.com.pl>

Phone: +34 919 456 782

Email: info@iwap.com.pl

Scan the QR code to access our WhatsApp.

