



Mobile communication green base station installation





Overview

Installing a Base Transceiver Station (BTS) is a critical step in building mobile communication networks. Here's a step-by-step guide to the process: 1. Site Acquisition and Survey Objective: Select and acquire a suitable location for the BTS. Activities: Identify. This acts as the “blood supply” of the base station, ensuring uninterrupted power. However, their construction, operation and maintenance, energy consumption, and security present numerous pain points, directly. Data traffic and the number of mobile subscribers have increased significantly prompting cellular network operators to install additional mobile cellular base stations (BSs) to meet the increasing demand. The g he adapter into a 230V wall so .



Mobile communication green base station installation



[Communication green base station energy-saving installation ...](#)

Several techniques have been deployed to reduce the energy consumption of the base station in what is called a green base station. This paper presents an insight into these approaches and

[Process of Installing a Base Transceiver Station \(BTS\)](#)

Installing a Base Transceiver Station (BTS) is a critical step in building mobile communication networks. Here's a step-by-step guide to the process:



[Mobile Base Station , Complete Solution for Greenfield Sites](#)

Overview The Mobile Base Station is a fully transportable, low impact solution that allows quick installation of a Greenfield telecommunications base station.

[Complete Guide to 5G Base Station Construction , Key Steps, Equipment](#)

Explore how 5G base stations are built--from site planning and cabinet installation to power systems and cooling solutions. Learn the essential components, technologies, and challenges behind 5G ...

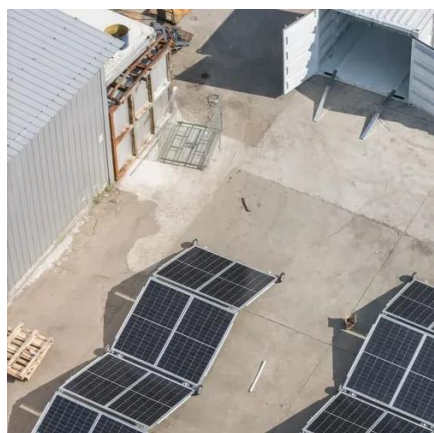


[Energy performance of off-grid green cellular base stations](#)

Although the base stations of next-generation mobile networks (e.g., 4G/5G/6G mobile networks) are designed to be energy efficient, the dense and large-scale deployment of these base stations will ...

Mobile Communication Base Stations

Base stations are distributed over a wide range of areas (covering urban, mountainous, rural, coastal, and desert environments). Some sites are located in remote locations and face harsh environments, resulting in high ...



Base station Installation Instructions

Installation Instructions To ensure optimal performance and connectivity of your base station, follow these setup instructions.

[Capital Communications Green Base Station Construction ...](#)



Therefore, this chapter aims to provide an overview of green 5G base stations, exploring their construction in China, their environmental impact, and the various factors and



The Leading Practices of Green Mobile Telecommunication Base Station ...

The aim of this study is to identify management practices that effectively reduce greenhouse gas (GHG) emissions with regard to the green supply chain adopted by mobile phone producers.

[An Insight into Deployments of Green Base Stations \(GBSs\) for an](#)

Several techniques have been deployed to reduce the energy consumption of the base station in what is called a green base station. This paper presents an insight into these approaches and highlights key challenges and ...





Contact Us

For catalog requests, pricing, or partnerships, please visit:

<https://www.iwap.com.pl>

Phone: +34 919 456 782

Email: info@iwap.com.pl

Scan the QR code to access our WhatsApp.

