



National grid uk renewable energy





Overview

Renewable electricity generation from wind and solar varies with weather, so it is integrated using forecasting, flexible generation and demand, network reinforcement, interconnection and electricity storage. In Great Britain, the (NESO) balances supply and demand in real time and manages constraints on the electricity transmission system. When network limits restrict power flows from regions with high renewable output, NESO can take bal.



National grid uk renewable energy



[Too Fast, Too Fragile: The UK's Push for Renewables vs. the ...](#)

The momentum behind renewable energy is undeniable. Developers are moving quickly, and the pipeline of clean energy projects continues to grow. Despite ambition and supply surging, a critical ...

[Renewable Energy Integration into the UK National Grid](#)

In this article, we will unpack the scientific and technical landscape of renewable energy integration into the UK grid, highlight key challenges and solutions, and show how expert thesis ...



[Record year for wind and solar electricity in Great Britain in 2025](#)

Renewable energy - considered crucial to limiting climate change - produced a record amount of electricity in Great Britain in 2025, BBC analysis shows. Wind was the biggest single

Renewable energy in the United Kingdom

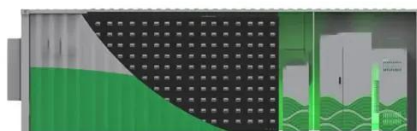
Renewable energy in the United Kingdom refers to energy from renewable sources used for electricity generation, heat and transport in the United Kingdom. In 2024, renewables accounted for 50.4% of ...



Renewable energy in the United Kingdom

Summary
Grid integration and storage
Overview
History
Policy, targets and support schemes
Electricity generation
Renewable heat
Transport

Renewable electricity generation from wind and solar varies with weather, so it is integrated using forecasting, flexible generation and demand, network reinforcement, interconnection and electricity storage. In Great Britain, the National Energy System Operator (NESO) balances supply and demand in real time and manages constraints on the electricity transmission system. When network limits restrict power flows from regions with high renewable output, NESO can take bal...



[National Policy Statement for renewable energy infrastructure](#)

Our analysis suggests that demand for electricity is likely to increase significantly over the coming years and could more than double by 2050. This could require a fourfold increase in low ...



[Live GB Electricity Generation, Carbon Intensity & Demand - Energy](#)

Real-time half-hourly data on GB electricity generation, renewable vs fossil fuel mix, power flow visualisation and carbon intensity from

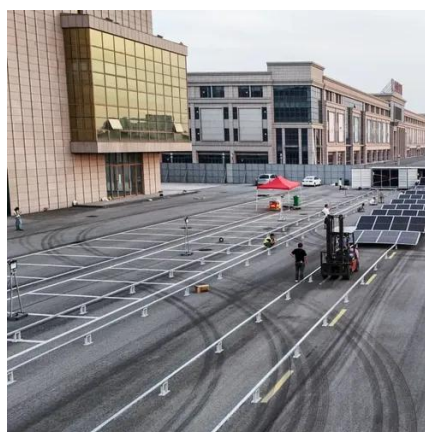


National Grid.



[Government confirms renewable energy provided half of the UK's](#)

UK wind, solar, hydro, and biomass plants collectively generated a record output last year, with renewables providing just over half of the UK's electricity in 2024.



Official stats show renewables generated over half UK's electricity for

New statistics released by the Government today show that renewables generated a record 50.8% of the UK's electricity in 2024 - the first year in which renewables have exceeded 50%, ...



[How much of the UK's energy is renewable? .. National Grid](#)

What renewables are used to generate electricity? Today, there are four main renewable energy sources used to power the UK: wind, solar, hydroelectric and bioenergy. They harness the natural ...



[The UK's Energy Mix 2025: Coal-Free, Wind-Led... But Still Gas-Heavy](#)



Renewables (wind, solar and hydro) supplied around 40% of the UK's electricity in 2025, with wind alone generating 32% across the year. This makes renewables the largest low-carbon ...



Contact Us

For catalog requests, pricing, or partnerships, please visit:

<https://www.iwap.com.pl>

Phone: +34 919 456 782

Email: info@iwap.com.pl

Scan the QR code to access our WhatsApp.

