



Number of photovoltaic panels connected to the inverter





Number of photovoltaic panels connected to the inverter

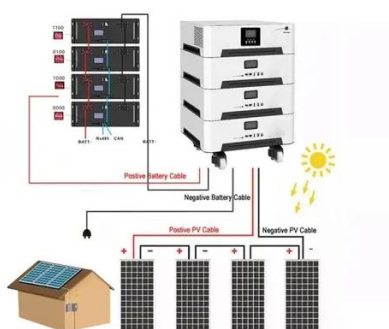


[How Many Solar Panels Can I Connect to an Inverter?](#)

How many solar panels can you connect to an inverter without overload? Get the right balance for maximum efficiency and power in your solar setup--here's what to know!

[How Many Solar Panels Can Be Connected To Solar Inverter?](#)

Thus, it is recommended to connect 10 solar panels of 350W each. The above calculation is for reference only, and the number of solar panels with different power ratings can be determined ...



[How Many Solar Panels Can Go On One Inverter?](#)

For a 2000-watt inverter, the number of solar panels depends on panel wattage, but a general guideline is around 6 to 8 panels for a balanced system. To calculate the number of solar ...

[How many solar panels can I use with a particular inverter?](#)

To determine the maximum number of solar panels you can use with an inverter, take the inverter's maximum input voltage and divide by your solar panel's Open Circuit Voltage (Voc). The ...



String Sizing Guide: How Many Solar Panels Can I String Into My Inverter?

String sizing describes the calculations we make to determine how many panels we should plug into one input for optimal efficiency. A panel string is a group of panels wired into a single ...

[How many panels can I connect to one inverter?](#)

In practice, it is common to install solar panels with a total power that 10% to 30% higher than the power of the inverter. This is called oversizing and is allowed because inverters rarely run at peak power ...



[How many solar panels can an inverter handle](#)

Solar panels are a crucial component of your solar energy system, but understanding how many can be connected to your inverter is crucial for optimal performance. You need to consider ...



[How Many Panels Can I Put on My Inverter?](#)



So, a 5kW inverter could handle around 20 standard 250-watt solar panels. But that's not the whole story. You may be wondering how many solar panels you can put on your inverter. Which ...

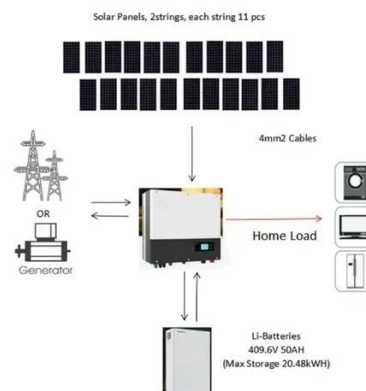


[How do I know how many solar panels I can connect to my inverter?](#)

If you're building or upgrading your solar system, it's important to know how many panels you can safely connect to your inverter. Your inverter's MPPT (Maximum Power Point Tracking) input ...

[How Many Solar Panels Can I Connect to an Inverter? A Complete ...](#)

This guide will discuss the factors that determine how many solar panels can be connected to an inverter, such as inverter specifications, wiring configurations, and the use of charge controllers.





Contact Us

For catalog requests, pricing, or partnerships, please visit:

<https://www.iwap.com.pl>

Phone: +34 919 456 782

Email: info@iwap.com.pl

Scan the QR code to access our WhatsApp.

