



Optimal angle measurement for photovoltaic panels





Overview

Therefore, the ideal solar panel angle for your array would be about 34 degrees. 7 degrees N, you might set your tilt angle at 41 degrees. Here's a look at the best solar panel angles of 30 major US cities: Scroll to the top of this page to use our Solar Panel Tilt. The solar panel's best angle determines how much sunlight your panels capture throughout the year, directly impacting energy production and ROI. A correctly tilted system can improve efficiency by 5-10% annually, reducing payback time and boosting long-term savings. Panels positioned perpendicular to the sun's rays absorb maximum energy, but the sun's position changes with seasons and your geographic location.



Optimal angle measurement for photovoltaic panels



[How to Determine the Optimal Solar Tilt Angle: A Step-by-Step Guide](#)

To determine the optimal solar tilt angle for photovoltaic panels, one must consider geographic location, seasonal changes, and household energy needs, with a common approach ...

Solar Panel Tilt Angle Calculator

Simply enter your address and it will provide the optimal angles for each season, as well as a year-round average angle for your specific location. An example of the calculator results.



[Solar Panel Direction & Orientation: 2025 Complete Guide](#)

Discover the optimal direction and angle for solar panels to maximize energy output. Complete guide with calculations, tools, and location-specific recommendations for 2025.



Solar Panel Angle Calculator

Our solar panel angle calculator takes the guesswork out of panel positioning, suggesting panel tilt angles based on your location's latitude and your willingness to reposition based on the sun's ...



[Calculating Optimal PV Azimuth and Tilt Angles for Max Output](#)

To maximize a solar array's output, the optimal pv azimuth and tilt angle must be precisely calculated. Generally, in the Northern Hemisphere, the ideal azimuth is 180° (true south), and the best fixed-tilt ...



[Solar Panel Best Angle , Tilt & Orientation Guide 2025](#)

In this guide, we'll break down the science behind the best solar panel angle, explain how to calculate it based on latitude, show seasonal adjustments, and share competitor-winning insights ...



[What's the Best Angle for Solar Panels? Optimum Tilt](#)

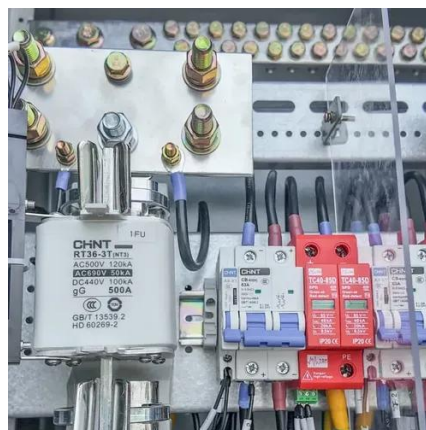
Modern tools make it easier to calculate the best angle for your panels. Programs like PVWatts and solar path charts can simulate how different tilts perform over a year. These ...



An experimental study on determination of optimal tilt and orientation



This article investigates the optimal tilt and azimuth angles to maximize the electricity production of photovoltaic (PV) panels. Initially, theoretical calculations were used to determine the ...



Learn how to calculate optimal solar panel tilt angles. Complete guide

The optimal tilt angle is calculated by adding 15 degrees to your latitude in winter and subtracting 15 degrees from your latitude in summer. For example, if your latitude is 34°, the optimal tilt angle for ...

[What's the Best Angle for Solar Panels to Get Maximum Output?](#)

Learn what goes into determining the best angle for solar panels to optimize energy output and how you can ensure your solar system is designed to maximize efficiency of your solar ...





Contact Us

For catalog requests, pricing, or partnerships, please visit:

<https://www.iwap.com.pl>

Phone: +34 919 456 782

Email: info@iwap.com.pl

Scan the QR code to access our WhatsApp.

