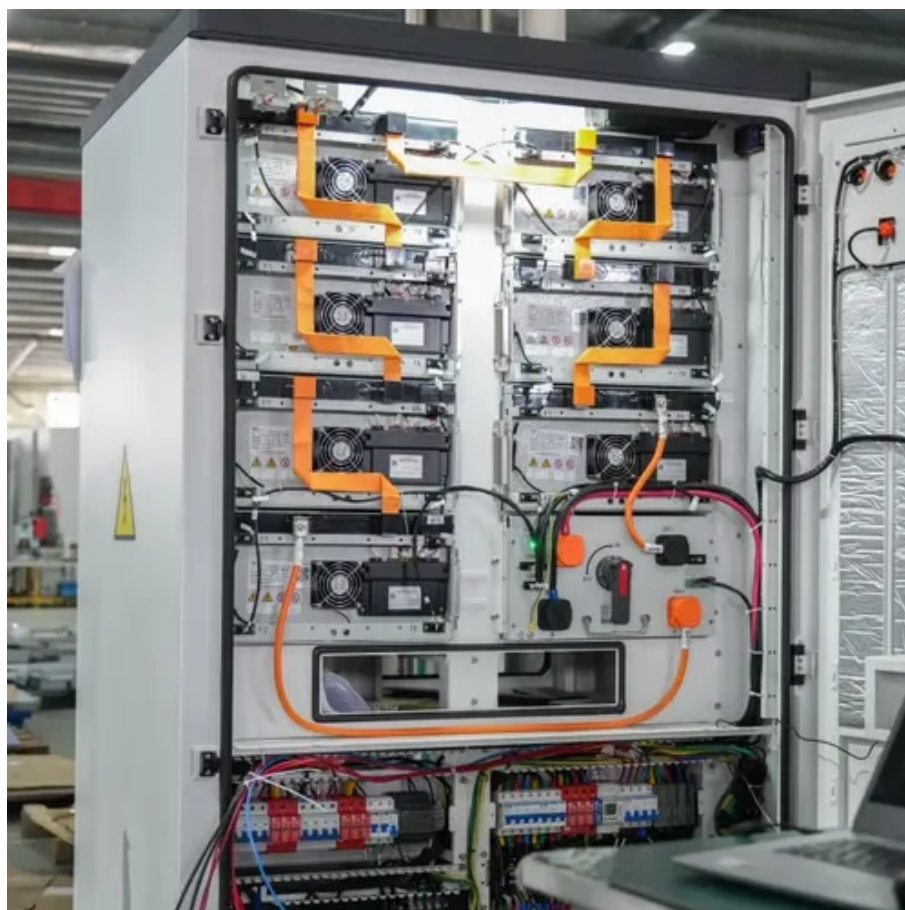




# Outdoor photovoltaic panel evaluation content includes





## Overview

---

This procedure includes system nameplate rating (kW), solar irradiance measurement (W/m<sup>2</sup>) and module cell temperature (C). Actual performance should be within about 5% of expected STC power. Procedure is best conducted during consistent weather conditions, where no array shading is present, and. NLR scientists study the long-term performance, reliability, and failures of photovoltaic (PV) components and systems in-house and via external collaborations. Through analysis, they quantify long-term degradation and share the results with the PV community. Hence, in order to construct power plants with good planning and the assurance of high-quality power, it. 1.



## Outdoor photovoltaic panel evaluation content includes

---



### Solar PV Post-Evaluation Checklist

This procedure includes system nameplate rating (kW), solar irradiance measurement (W/m<sup>2</sup>) and module cell temperature (C). Procedure is best conducted during consistent weather conditions, ...

### [Outdoor Performance Assessment of New and Old Photovoltaic Panel](#)

This paper presents a new multi-photovoltaic panel measurement and analysis system (PPMAS) developed for measurement of atmospheric parameters and generated power of ...



### [The Performance of Solar PV Panels and Arrays Affected by Outdoor](#)

In this paper, the performance of a photovoltaic (PV) system is principally examined in relation to the impact of various environmental conditions. This study report focuses mostly on how ...

### [Extended energy rating of photovoltaic modules by outdoor ...](#)

Parts 1 and 2 of the standard allow for the characterization of PV modules using either indoor or outdoor methods. This study focuses on validating outdoor procedures, specifically those ...



### [Solar Photovoltaic: SPECIFICATION, CHECKLIST AND GUIDE](#)

To assist in evaluating each home, EPA has developed an online Renewable Energy Ready Home Solar Site Assessment Tool (RERH SSAT), which compares the solar resource potential of a proposed ...



### [Photovoltaic Performance , Photovoltaic Research , NLR](#)

Primary techniques for analyzing modules include light and dark current-voltage (I-V) measurements, visual inspection, and infrared and electroluminescent imaging. More detailed ...



### [Solar Panel Testing: Ensuring Efficiency, Durability, and Safety](#)

What is Solar Panel Testing? Solar panel testing involves a range of procedures designed to evaluate the efficiency, durability, and safety of solar photovoltaic (PV) modules. These ...



### [How to Evaluate Solar Panels with 5 Key Parameters](#)



Solar panels' efficiency rating is based on lab tests or real-world scenarios.



### Solar Panel Performance Testing

Solar panels undergo comprehensive testing and certification to ensure optimal performance in efficiency and reliability. This guide provides detailed information on solar panel performance testing, ...

### Solar PV Site eValuation CheCkLiSt

Available square footage for a solar system should match the desired system size and production goals of the project. Can the roof structurally support a solar system? The building should be able to handle ...





## Contact Us

---

For catalog requests, pricing, or partnerships, please visit:

<https://www.iwap.com.pl>

Phone: +34 919 456 782

Email: [info@iwap.com.pl](mailto:info@iwap.com.pl)

Scan the QR code to access our WhatsApp.

