



Outdoor wireless base station issues





Overview

If your signal is only 1 bar, try moving the camera closer to the base station. Check the battery level from the Home screen of the Wyze app, under the camera's name. Wyze Base Station is connected via Ethernet cable to your router, but the status light is not turning solid blue. It's important to remember that you shouldn't delete your Wyze Cam Outdoor or Wyze Base Station from the Wyze app while they show. In this in-depth guide, we'll explore multiple solutions to this issue, ranging from basic checks to advanced network tweaks. You'll find clear, actionable steps that anyone can follow, whether you're tech-savvy or new to smart devices. I use a Unifi system with 3 wireless APs.



Outdoor wireless base station issues

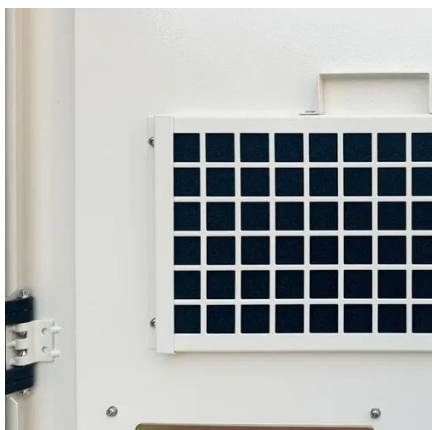
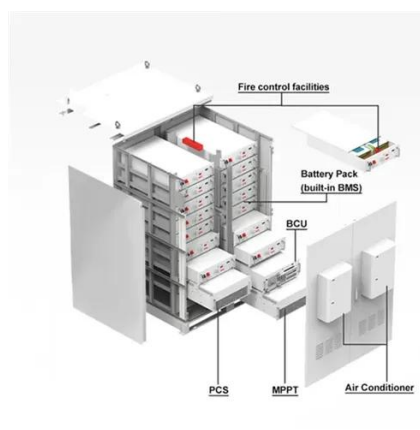


[Wyze Cam Outdoor Connectivity Troubleshooting](#)

Reboot your Wyze Base Station to re-establish the connection. Once the status light is solid blue, the reboot is complete. Check the status light on the Base Station and Wyze Cam ...

[Wyze Base Station Not Connecting: How to Fix!](#)

In this article, we'll explore some of the common causes for Wyze Base Station connection problems and provide troubleshooting tips to help restore functionality.



[Troubleshooting Wyze Base Station Connection Issues: Tips and Tricks](#)

In this blog post, we will explore the reasons why your Wyze Base Station may fail to connect and offer some tips and tricks to get it back up and running. If you're having trouble with your ...

[Fix Wyze Base Station Not Connecting - Complete Troubleshooting ...](#)

If you're struggling with a Wyze Base Station that won't connect, you're not alone--and you're in the right place. In this in-depth guide, we'll explore multiple solutions to this issue, ranging ...



[Outdoor camera connectivity Issues with Base Station , Roku Community](#)

Except I use two base stations for 6 cameras which I split on the two. Some times the camera only last 5 hours . And I never had an issue with it before. Been happening a bit with most of the cameras. Last ...



[Base Station Connectivity Troubleshooting](#)

Check your base station for firmware upgrades. In the Wyze app, go to Account > Firmware Upgrade > Update next to Wyze Base Station. Outdated firmware can cause connectivity ...



[Outdoor Base won't connect to WiFi if 5GHz network exists](#)

In summary, I know what the issue is with my particular setup, and I was able to implement a workaround, but the WiFi connection won't work for me until Wyze is able to make the ...



Wyze Base Station Not Connecting



During the setup process, the Wyze base may fail to connect to your network or recognize your Wi-Fi when switching from cable to wireless mode. As with a coin, there are two sides ...



[9 Wyze Base Station Problems Troubleshooting \(Solved\)](#)

Summary So there you have it: 9 Wyze Base Station problems explained and solved. Remember, the first step to solving your Base Station problems is to identify what it's telling you ...

[9 Wyze Base Station Problems Troubleshooting \(Solved\)](#)

Reboot your Wyze Base Station to re-establish the connection. Once the status light is solid blue, the reboot is complete. Check the status light on the Base Station and Wyze ...



[Troubleshooting Guide for Wireless Weather Stations by TFA](#)

Here's a quick table to summarize the common problems you might face with your wireless weather station and their respective solutions. - Check if the batteries are installed correctly. - Replace ...



Contact Us

For catalog requests, pricing, or partnerships, please visit:

<https://www.iwap.com.pl>

Phone: +34 919 456 782

Email: info@iwap.com.pl

Scan the QR code to access our WhatsApp.

