



Peaking units power generation





Overview

Natural gas peaker plants are power generation facilities that operate during peak electricity demand. [1] Because they supply power only occasionally, the power supplied commands a much higher price per. Natural gas peaking plants play a crucial role in stabilizing the energy grid, especially as renewable energy sources become more prevalent. The average capacity factors of these combustion turbines varied significantly by time of day and region, as shown in the graph above. Find out why energy flexibility solutions, like demand response and energy storage, can reduce the need for these plants.



Peaking units power generation



Peaker Plants

A peaker plant, also known as a peaking power plant or simply "peaker," is a type of power plant that operates primarily during periods of high electricity demand.

[The past, present, and future of peaking thermal power plants in the](#)

To understand what types of power plants have historically served as peaking plants, we use net generation and nameplate capacity data from the Energy Information Administration to ...



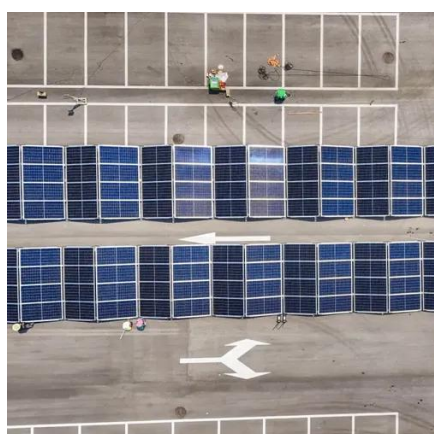
[How Peaking Power Plants Save From Energy Crisis During Peak Times](#)

Peaker gas plants or a peaking power plant is a power plant that is used to produce high level electricity during peak demand. It includes types like pumped storage hydroelectric power plant, BESS, gas ...

Peaking power plant

Peaking power plants, also known as peaker plants, and occasionally just "peakers", are power plants that generally run only when there is a high demand, known as peak demand, for electricity.

[1]



[Electricity: Information on Peak Demand Power Plants](#)

Peaker power plants are part of the U.S. energy infrastructure and help meet peak electricity demand. Peak demand generally occurs at times during the day when cooling and heating needs are ...

[What factors determine when to activate peaking units ...](#)

The timing for starting grid peaking units is primarily determined by multiple factors to ensure the stable operation and efficient use of resources in the power system.



What is a peaking power plant?

What is a peaking power plant? Peaking power plants - also known as peaker plants - are low use, high-emitting power plants that grid operators call on at times of high demand.



[Natural gas-fired combustion turbines are generally used to meet peak](#)



Peaking units tend to run infrequently for short periods to help electric systems meet peak demand. One way to show the use of these units is to look at hourly unit output data averaged over a ...



[Natural Gas Peaking Plants: Types, Pros. & Cons. , Diversegy](#)

Natural gas peaker plants are power generation facilities that operate during peak electricity demand. Unlike baseload plants that run 24/7, peaking power plants are used to ...



Contact Us

For catalog requests, pricing, or partnerships, please visit:

<https://www.iwap.com.pl>

Phone: +34 919 456 782

Email: info@iwap.com.pl

Scan the QR code to access our WhatsApp.

