



Photovoltaic cell mask design



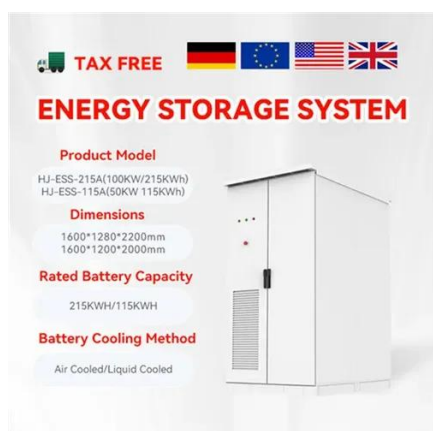


Overview

In this work, a detailed description of the various steps involved in the fabrication of high-efficiency hydrogenated amorphous-silicon cells using plasma-enhanced chemical vapor deposition, and a novel shadow masking technique is presented. The influence of the different masking methods on the. A must have for the accurate performance assessment of Dye Solar Cells. A low tack adhesive makes the mask easily reusable. This work covers mask design, photoresist coating, UV exposure, development, etching, and metal layer. | Srujan Patil B N Masters in Microelectronics & VLSI | Backend VLSI | Fabrication & IC Packaging Enthusiast. A shadow mask is a template or mask with specific patterns or openings designed to allow certain materials to pass through while blocking others. a solar cell is manufactured by forming p-doped and n-doped regions on a silicon substrate.



Photovoltaic cell mask design



[Fabrication process flow of a Photovoltaic \(PV\) cell using](#)

Fabrication process flow of a Photovoltaic (PV) cell using Photolithography. This work covers mask design, photoresist coating, UV exposure, development, etching, and metal layer definition

[Shadow Masks for Deposition](#) , [Shadow Mask Design](#) , [Shadow Mask](#)

Scaling up the use of shadow masks to large-scale manufacturing can introduce challenges in terms of consistency, alignment, and mask fabrication. The aspect ratio (depth-to-width ...



[Promising Shadow Masking Technique for the Deposition of High](#)

In this work, a detailed description of the various steps involved in the fabrication of high-efficiency hydrogenated amorphous-silicon cells using plasma-enhanced chemical vapor deposition, ...



Test Cell Masks

The Test Cell Mask is an opaque sticker with a tailored aperture that hides the non-active area of the cell while compensating for the optical losses inherent to masking.

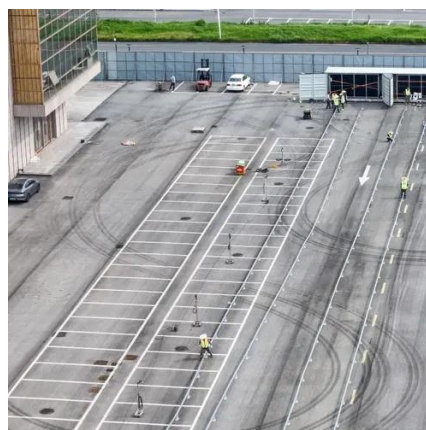


[Mask-programmable on-chip photovoltaic cell array](#)

We propose a gate-array style easy configuration method for voltage photovoltaic cell for rapid prototyping of on-chip IoT system.

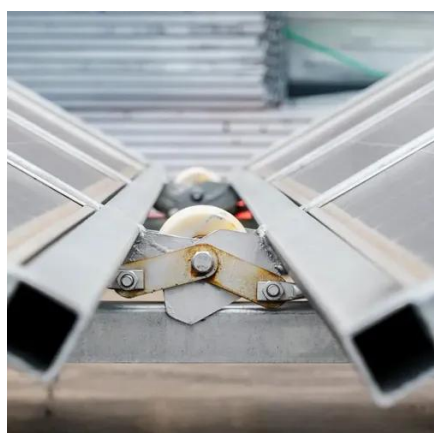
Effects of Masking on Open-Circuit Voltage and Fill Factor in Solar Cells

Although the errors induced in voltage and fill factor by using a mask are generally smaller than what the errors in current can amount to when not using a mask, they are, on the other ...



[How do i design a cathode deposition mask for perovskite solar cells](#)

The dimensions of a mask is determined by its function and by the technological constraints such as the minimum width of a path and the minimum spacing between to paths.



US20120220071A1



A screen mask has a mesh, a frame, and at least one emulsion pattern. The mesh includes a squeeze surface pressed by a squeegee, and a discharge surface discharging a paste. The frame fixes an



Mask and plate: a scalable front metallization with low-cost

For the first time, this work presents industrially relevant mask and plate for front metallization of III-V-based solar cells replacing expensive photolithography. Metal contacts are

Effects of Masking on Open-Circuit Voltage and Fill Factor in Solar

We focus our study on perovskite solar cells, where the attention is currently needed, but the conclusions presented are valid for any photovoltaic technology.





Contact Us

For catalog requests, pricing, or partnerships, please visit:

<https://www.iwap.com.pl>

Phone: +34 919 456 782

Email: info@iwap.com.pl

Scan the QR code to access our WhatsApp.

