



Photovoltaic module support beam materials





Overview

The purpose of aluminum profile rails or steel beams is to securely fasten the photovoltaic modules to the roof during rooftop installation. This article addresses the technical, aesthetic, and strategic problem of the limited attention paid to design and selection of materials in photovoltaic system (PSS) support structures despite their direct impact on the efficiency, durability and economic viability of these systems. As the costs. This master's thesis topic has been approved by three universities: University of Sarajevo, Sarajevo, Bosnia and Herzegovina; Technische Universität Bergakademie Freiberg, Freiberg, Germany; and Lappeenranta-Lahti University of Technology LUT, Lappeenranta, Finland, based on a signed Agreement on. There are many types of beams, but one is mostly commonly used in solar farms to offer vital support for harnessing energy.



Photovoltaic module support beam materials

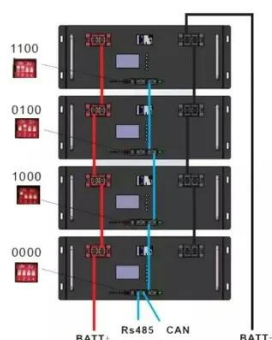


[Advances in Mounting Structures for Photovoltaic Systems](#)

Our research comprehensively analyzes the mechanical, environmental, and regulatory factors influencing material selection and structural design in PV mounting systems.

[PV mounting & mounting systems » Mounting solar system](#)

The purpose of aluminum profile rails or steel beams is to securely fasten the photovoltaic modules to the roof during rooftop installation. They serve as support points and form ...



[SELECTION OF MOUNTING STRUCTURES MATERIAL FOR ...](#)

The selection of suitable materials for mounting solar panels is crucial to ensure the efficiency, resistance, and environmental sustainability of the entire system.

Types of Beams Used for Solar Energy

Learn more about the types of structural beams that are used for solar energy -- and how you can find the right partner for your solar beam needs. Structural beams are available in a diverse ...



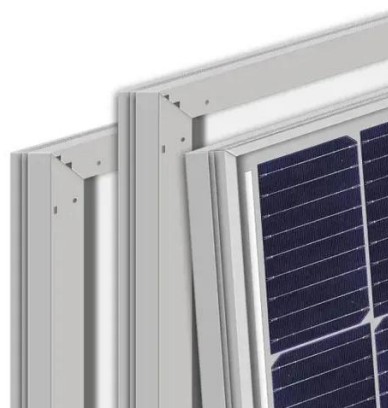
[Design and Implementation of PV Mount Systems](#)

This system serves as the structure that supports photovoltaic modules and directly impacts the stability, safety, and power generation efficiency of the photovoltaic power station.



[Support beam applied to solar photovoltaic module](#)

Compared with the prior art, the support beam can effectively reduce bending deformation of a center area of the solar photovoltaic module, improves pressure resistance performance of the



Types of Beams Used for Solar Energy

Learn more about the types of structural beams that are used for ...



[Structures and support profiles for photovoltaic modules](#)



The support structures are the elements that allow the fixing of the modules on the roofs where the photovoltaic installation must be housed, constituting a main element of the solution. Circutor offers a ...



Photovoltaic support main beam cover

In the photovoltaic (PV) solar power plant projects, PV solar panel (SP) support structure is one of the main elements and limited numerical studies exist on PVSP ground mounting steel frames to be a ...



[Steel Profiles and Pipes in the PV Solar Industry: A Detailed Analysis](#)

In conclusion, steel profiles and pipes are indispensable components in the PV solar industry, providing the foundational support, structural integrity, and durability necessary for solar ...



[Design and Analysis of Steel Support Structures Used in Photovoltaic](#)

This paper contributes to the current issues and challenges faced by the support structure designer for the ground-mounted solar PV module mounting structure (MMS).





Contact Us

For catalog requests, pricing, or partnerships, please visit:

<https://www.iwap.com.pl>

Phone: +34 919 456 782

Email: info@iwap.com.pl

Scan the QR code to access our WhatsApp.

