



Photovoltaic panel edge gutter size atlas





Overview

Most manufacturers suggest a minimum of 6 to 12 inches between the edge of the solar panel and the roof edge to accommodate mounting hardware and allow for slight movements due to wind or thermal expansion. Photovoltaic panel edge gutter solar panels doesn't overshoot the gutter. Select sites, draw rectangles or polygon by clicking the respective map controls. Calculate energy. Tesla's power producing photovoltaic (PV) roofing Tiles are visually indistinguishable from the non-power producing metal or glass roofing Tiles, enabling homeowners the ability to harvest solar energy without aesthetic compromise. Accurately defining roof edges— gutters, ridges, valleys, and rakes —is an essential step to ensure the platform correctly calculates your system's annual kWh production based on the roof layout. **Pro Tip:** Before. imatic conditions. It can be mounted on slopes bet GR GR V array installed. The thickness of orner of the roof. Currently, the most common monocrystalline modules on the market measure between 1.3 m in width, and about 30–40 mm in thickness.



Photovoltaic panel edge gutter size atlas



Solar Roof Design and Construction Guide

They can be cut to size and shape to finish edge conditions. Obstruction flashings can be fastened directly to the metal surface using gasketed, color matched metal-to-metal self-tapping screws.

[Rooftop Solar Panel Size and Layout Guide](#)

This article, based on practical case studies and calculation formulas, analyzes solar panel dimensions, spacing, and rooftop assessment methods to help distributors and users select ...



[How Close Can Solar Panels Be to Edge of Roof](#)

Determining how close solar panels can be to the edge of a roof is a critical aspect of safe and efficient solar energy system installation. The distance impacts not only structural safety but ...

[Outdoor photovoltaic panel size drawings atlas](#)

Our solar panel layout tool and PV design software make it easy for you to plan and optimize your solar panel installation. With advanced features and a user-friendly interface, you can confidently design a ...



GSE IN-ROOF SYSTEM

The dimensions of the PV array can be calculated using the GSE frame reference (see sections 1.3 and 1.4 to determine the GSE frame compatible with the module):



[Optimize Solar Panel Performance Through Edge Spacing Design](#)

Comprehensive technical guide on solar panel cell-to-edge spacing requirements based on IEC standards. Learn optimal distances for different module types and environmental conditions.



[GSE tray fixings for gutter adjacent location](#)

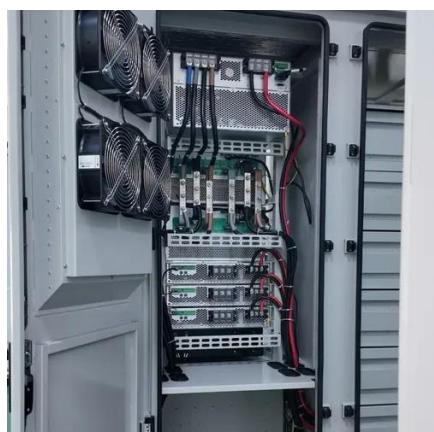
Not all solar panels can be clamped on the short sides - best to check. One thing to factor in when installing direct to the gutter - water rushes quicker down non-stick glass than other ...



[Photovoltaic panel edge gutter size atlas](#)



Note & #226;EUR" on many roofs a 50cm gap from the edge will still mean that PV modules are fitted in the & #226;EURoeEdge Zone& #226;EUR as defined in BS EN 1991-1 where higher pressure ...



energylibrary.tesla

ALIGN UNDERLAYMENT ONTO THE NOTCH INDICATED ON THE DRIP EDGE, WHICH IS 1-INCH FROM THE EDGE. 5. FASTENING REQUIREMENTS FOR HIGH WIND ENVIRONMENT WITH ...

Different Edge Types

This article walks you through how to define edge types in OpenSolar's design tool. Accurately defining roof edges-- gutters, ridges, valleys, and rakes --is an essential step to ensure the platform correctly ...





Contact Us

For catalog requests, pricing, or partnerships, please visit:

<https://www.iwap.com.pl>

Phone: +34 919 456 782

Email: info@iwap.com.pl

Scan the QR code to access our WhatsApp.

