



# Photovoltaic panel galvanizing line model specification table

Solar





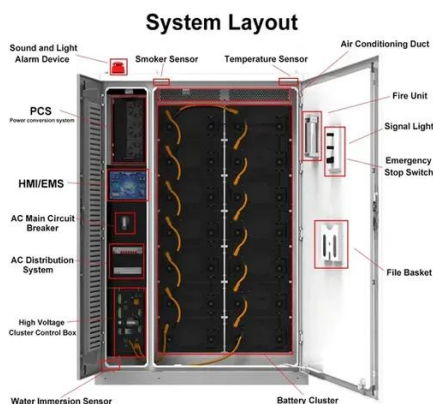
## Overview

---

Specification table of galvanized lines of phot el-to-roof, tilt up, or open structure mounting applications. The POWER RAIL mounting system provide technical datasheets of the proposed solar PV panels. Preference will be given to pa el manufacturers that have an Australian office and employees. A standard 60-cell 1.7m2 solar panel weighs around 18kg, while a 72-cell 2. Solar Panel Specifications: The size, weight, and configuration of the solar. Manufacturing of Electrical Panels, Control Panels, Instrumentation Panels Manufacturing of Solar Panel Structures and Control Panel Structures. Ignoring Compatibility: Check. DWG format available upon request. However, long-term exposure to ultraviolet rays, high temperature and humid environments accelerates the oxidation of PV panels, which finally results in functional failure.



## Photovoltaic panel galvanizing line model specification table



### [Photovoltaic panel galvanizing line model difference table](#)

Find prices for solar panels and compare technical specifications of various brands and models of modules in our regularly updated solar panel comparison table.

## SOLAR PANEL DATASHEETS

Standard 60 Cells Monocrystalline PV Module High efficiency solar cell High conversion efficiency and more power output per square meter. Excellent weak light performance More power output in weak ...



## Solar Technical Drawings

Technical drawings showing installation of integrated solar PV and solar thermal panels in slate and tile roofs and solar thermal plumbing systems

### [Photovoltaic panel column specifications and models table](#)

What is a solar panel system? A solar panel system is an inter-connected assembly, (often called an array), of photovoltaic (PV) solar cells that (1) capture energy emanating from the ...



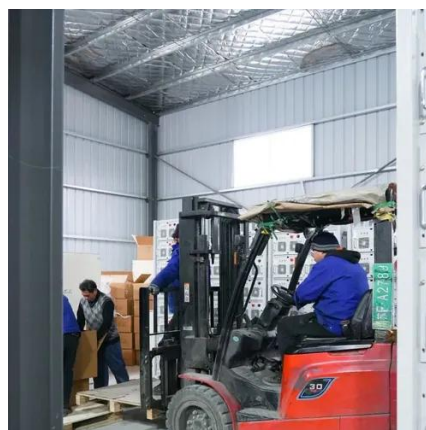
### [Specification table of galvanized lines of photovoltaic panels](#)

The supplied equipment must comply the below mentioned specifications: PANEL MOUNTING STRUCTURE (i) The PV solar panel mounting metallic structure should be fixed mount L2 or



### **Specifications and dimensions of galvanized lines for photovoltaic ...**

The most common solar panel sizes for residential installations are between 250W and 400W, while larger commercial installations may use panels up to 500W or more.



### [Solar Photovoltaic: SPECIFICATION, CHECKLIST AND GUIDE](#)

The RERH specifications and checklists take a builder and a project design team through the steps of assessing a home's solar resource potential and defining the minimum structural and system ...



### [Standard Specifications for Galvanizing Photovoltaic Panels](#)



Photovoltaic (PV) systems are one of the most important renewable energy sources worldwide. Learning the basics of solar panel wiring is one of the most important tools



### Hot Dipped Galvanized Solar PV Support Structure

Galvanized steel is widely used in applications where corrosion resistance is needed without the cost of stainless steel, and is considered superior in terms of cost and life-cycle.

### Differences in the models of photovoltaic panel galvanizing lines

Parameters of photovoltaic panels (PVPs) is necessary for modeling and analysis of solar power systems. The best and the median values of the main 16 parameters among 1300 PVPs were identified.





## Contact Us

---

For catalog requests, pricing, or partnerships, please visit:

<https://www.iwap.com.pl>

Phone: +34 919 456 782

Email: [info@iwap.com.pl](mailto:info@iwap.com.pl)

Scan the QR code to access our WhatsApp.

