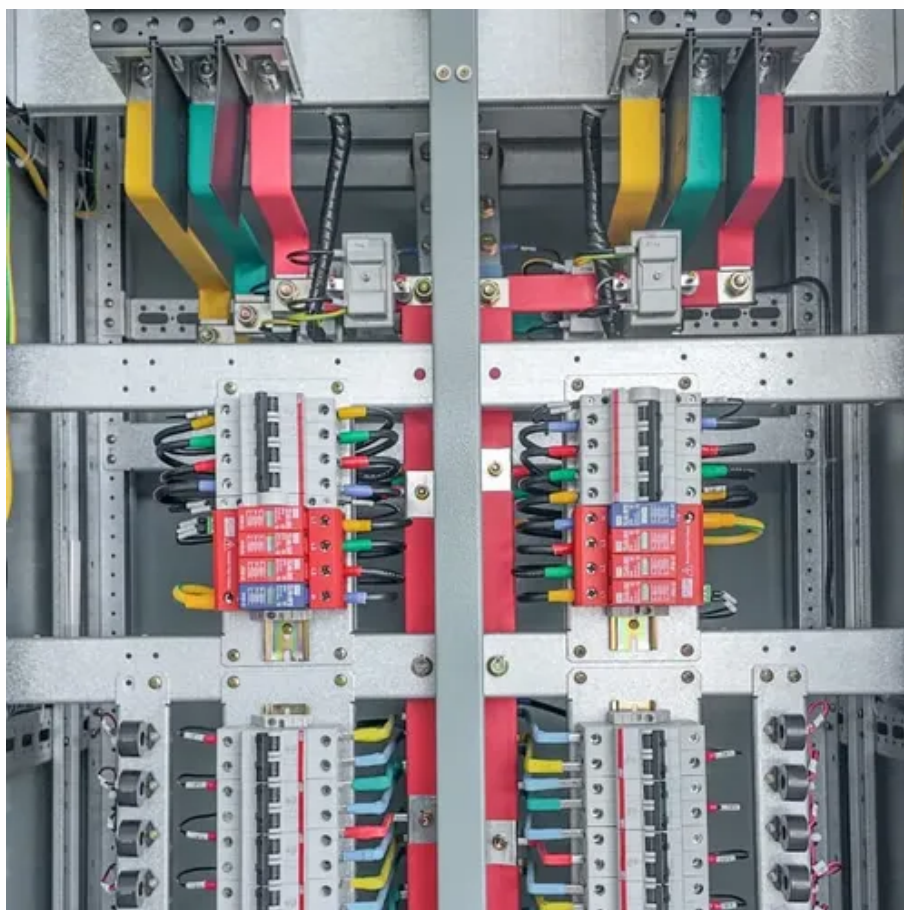




Photovoltaic panel power conversion principle diagram





Overview

This solar panel diagram shows how solar energy is converted to create free electricity for your business or home. How Solar Panels Work Step by Step?

The sun gives off light, even on cloudy days. Solar Cell Definition: A solar cell (also known as a photovoltaic cell) is an electrical device that transforms light energy directly into electrical energy using the photovoltaic effect. A simple, clear guide to the basics of solar energy. Below, you can find resources and information on the. Solar energy can be harnessed in two primary ways. Second, solar thermal technologies utilize sunlight to heat water for domestic uses, warm building spaces, or heat fluids to drive electricity-generating. The Solar Energy Conversion Diagram, or solar energy converter, is essentially a large photodiode designed to operate solely as a photovoltaic device and to give as much output power as possible. The solar cell diagram showcases the working mechanism of a photovoltaic panels are made up of semiconductor materials like si and transparent photovoltaic glass to generate electricity.



Photovoltaic panel power conversion principle diagram



[Solar Energy Conversion Diagram , Solar Cell Characteristics](#)

The Solar Energy Conversion Diagram, or solar energy converter, is essentially a large photodiode designed to operate solely as a photovoltaic device and to give as much output power as possible.

[Photovoltaic solar panel power generation principle diagram](#)

What is a solar energy block diagram? concentrate sunlight onto a small area, intensifying the heat. A solar energy block diagram illustrates the key components and their interconnections in solar power ...



How Does Solar Work?

When the sun shines onto a solar panel, energy from the sunlight is absorbed by the PV cells in the panel. This energy creates electrical charges that move in response to an internal electrical field in ...



[Generalized block diagram of a PV energy conversion system.](#)

Fig. 1 shows the general block diagram of a PV conversion system, which consists of a system controller, PV panel, filter, and power converters [43,44].



[Schematic diagram of solar cell power generation principle](#)

The working principle of solar cells is based on the photovoltaic effect, i.e. the generation of a potential difference at the junction of two different materials in response to electromagnetic



[Understanding Solar Photovoltaic \(PV\) Power Generation](#)

Solar photovoltaic (PV) power generation is the process of converting energy from the sun into electricity using solar panels. Solar panels, also called PV panels, are combined into arrays in a ...



[How Do Solar Panels Work? Diagram & Step by Step , EvoEnergy](#)

Discover how solar panels convert sunlight into usable electricity, step by step, from photovoltaic (PV) cells generating DC, through conversion to AC via an inverter, to powering your business or ...

Test certification



[Solar PV Energy PV Conversion Efficiency Diagram](#)



Electricity demand peaks at a different time than PV generation, leading to energy surpluses and deficits. Energy storage and demand management help to match PV generation with demand.⁶

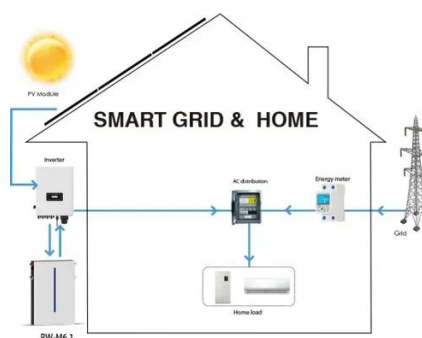


[Solar Cell: Working Principle & Construction \(Diagrams Included\)](#)

A solar cell (also known as a photovoltaic cell or PV cell) is defined as an electrical device that converts light energy into electrical energy through the photovoltaic effect.

SOLAR ENERGY CONVERSION PROCESS IN ...

Solar energy is considered the primary source of renewable energy on earth; and among them, solar irradiance has both, the energy potential and the duration sufficient to match mankind future





Contact Us

For catalog requests, pricing, or partnerships, please visit:

<https://www.iwap.com.pl>

Phone: +34 919 456 782

Email: info@iwap.com.pl

Scan the QR code to access our WhatsApp.

