



Photovoltaic panel roof display effect



✓ IP65/IP55 OUTDOOR CABINET

✓ OUTDOOR MODULE CABINET

✓ OUTDOOR 5G BASE STATION CABINET

✓ WATERPROOF





Overview

When placed on a building's roof, PV panels affect the building's energy loads by shading the roof surface. Reflection is the enemy of efficiency. Therefore, manufacturers invest heavily in. Rooftop photovoltaic (PV) panel systems have become a key component in green building design, driven by new building sustainability measures advocated worldwide. The combined effect of shading caused by PV panels and cool. Roof angle, and thus the angle panels will be positioned, is normally of little concern to the average homeowner getting solar quotes, but can drastically affect the production of their solar panels.



Photovoltaic panel roof display effect

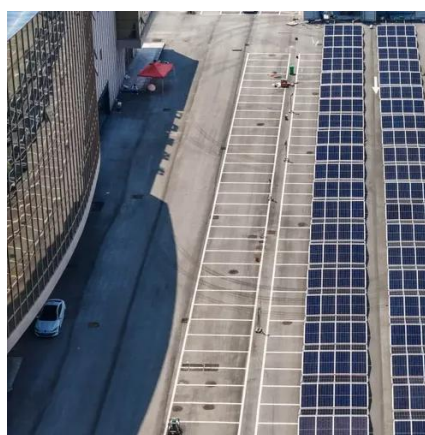


[Evaluating the shading effect of photovoltaic panels on green roof](#)

The hydrology and stormwater management benefits of green roofs (GRs) when integrated with photovoltaic (PV) arrays are currently not well understood. This study is the first quantitative ...

[Myth vs Reality: Do Solar Panels Cause Glare or Dazzle?](#)

The belief that solar panels create problematic glare is a persistent myth that is not supported by science or data. Through advanced technologies like anti-reflective coatings and ...



Study Shows Cool Roofs Can Help Increase Power Yields in PV Solar Panels

Published in the December 2023 edition of Journal of Building Engineering, the study is one of the few to look at the effects reflective roofing surfaces have on solar panels that create ...

[Revealing the impact of albedo on solar panel power generation](#)

Within this context, the current study explores the performance of monofacial and bifacial solar panels on various roof typologies with variable installation patterns and albedos.



[Experimental Work to Investigate the Effect of Rooftop PV Panel](#)

This paper presents a long-term experimental investigation into the changes in roof temperature caused by PV panels. The experiment was conducted over the course of a year, with ...



[Assessing the combined effect of PV panels' shading and](#)

When placed on a building's roof, PV panels affect the building's energy loads by shading the roof surface. However, the shading effect of PV panels could be different depending on ...



[Shading effect and energy-saving potential of rooftop photovoltaic on](#)

Rooftop photovoltaic panels can serve as external shading devices on buildings, effectively reducing indoor heat gain caused by sunlight. This paper uses a numerical model to ...



[Experimental Work to Investigate the Effect of Rooftop PV Panels](#)



Rooftop PV panel systems have become a key component in green building design, driven by new sustainability measures advocated by various energy efficiency and sustainability ...



[Solar Skins Explained: A Complete Guide for Homeowners Seeking](#)

Solar skins are an innovative solution designed to enhance the visual appeal of solar panels. They are thin films overlaid on standard solar panels, bearing printed designs or patterns, often made to mimic ...

[Roof Angle & Panel Tilt Effect on Solar Production](#)

Roof Angle has a surprisingly large effect on solar production. But what angle is the best angle for panels to face? We ran a study to compare areas around the country.





Contact Us

For catalog requests, pricing, or partnerships, please visit:

<https://www.iwap.com.pl>

Phone: +34 919 456 782

Email: info@iwap.com.pl

Scan the QR code to access our WhatsApp.

