



Photovoltaic panel wind tunnel test method





Overview

Using the fully aeroelastic similarity model, this research systematically analyzes wind-induced self-excited vibrations in both single-span and multi-span PV arrays, while capturing the effects of array interference. This paper presents an experimental study of wind load on a ground-mounted PV panel in a wind tunnel. The detailed characteristics of pressure distribution of the mean and peak load. Wind tunnel test specifications for photo situations: stand-alone and forming an array in the wind tunnels and reported in the literature. However, the reliability of these results depends on accurately modelling the geometric features (e., chord to thickness. This study, set against the backdrop of the Huarong PV project by China Power Construction Group Guiyang Survey and Design Institute, employs a flexible PV rigid model to conduct wind tunnel pressure tests, examining the wind load characteristics of PV modules under different azimuth angles.



Photovoltaic panel wind tunnel test method



Wind field characteristics of photovoltaic arrays based on wind tunnel

A scaled-down PV model was constructed and wind tunnel tests were conducted to analyze the disturbance characteristics of the PV array on the wind speed field at different wind ...

[Wind tunnel experiments on ground-mounted photovoltaic solar ...](#)

This paper presents an experimental study of wind load on a ground-mounted PV panel in a wind tunnel. The model was tested with inclinations of 15° and 23° for different wind attack directions in an open ...



[Wind Load Characteristics and Load Partition Study of ...](#)

This study, set against the backdrop of the Huarong PV project by China Power Construction Group Guiyang Survey and Design Institute, employs a flex-ible PV rigid model to conduct wind tunnel ...



Title of paper

Comparatively large scale (1:10) ground mounted solar wind tunnel models were built and tested in CPP's boundary layer wind tunnel. Analyses will be conducted to investigate the edge treatments ...

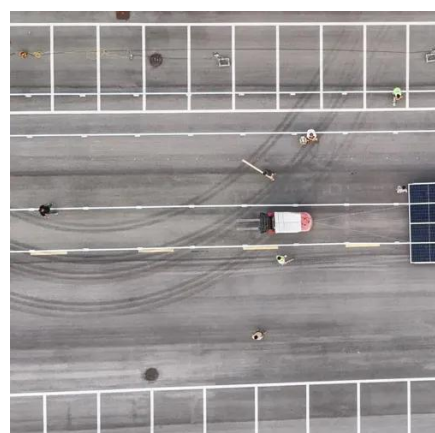


[Wind tunnel test specifications for photovoltaic panels](#)

This paper discuss the difficulties of the wind load design for the PV power plants ground mounted in Romania and compares the Romanian, German, European and American wind design code

Full Scale and Wind Tunnel Testing of a Photovoltaic Panel Mounted ...

Model scale testing of similar configurations was conducted in a boundary layer wind tunnel (BLWT) at a scale of 1:12. During the wind tunnel tests, the PV panel model was equipped ...



[Wind pressure characterization on ground-mounted solar PV systems: ...](#)

This study introduces a novel integrated methodology combining wind tunnel (WT) experiments, Computational Fluid Dynamics (CFD), and Finite Element Analysis (FEA) to thoroughly ...

[Wind tunnel experiment of wind loads on ground mounted photovoltaic](#)



This paper presents an experimental study of the wind load on a stand-alone ground mounted PV panel in a wind tunnel. The model was tested with inclinations of 15° and 23° for different wind attack ...



[Fully aeroelastic wind tunnel test method and determination of gust](#)

Using the fully aeroelastic similarity model, this research systematically analyzes wind-induced self-excited vibrations in both single-span and multi-span PV arrays, while capturing the effects of array ...



Contact Us

For catalog requests, pricing, or partnerships, please visit:

<https://www.iwap.com.pl>

Phone: +34 919 456 782

Email: info@iwap.com.pl

Scan the QR code to access our WhatsApp.

