



# Photovoltaic panels are connected in series after being shunted





## Overview

---

When solar panels are hooked up in series you connect the minus of one panel to the plus of the next panel. The voltages are summed, but the current remains the same: Putting panels in series is desirable as it keeps the amperage low, and amperage is the key factor. When N-number of PV modules are connected in series. The following figure shows a schematic of series, parallel and series parallel connected PV. The main difference between series and parallel wiring of solar panels is their effect on voltage and current.



## Photovoltaic panels are connected in series after being shunted

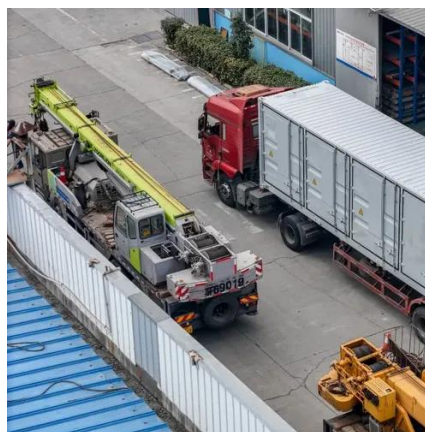


### [How To Wire Solar Panels In Series Vs. Parallel](#)

When you connect the positive terminal of one panel to the negative terminal of another panel, you create a series connection. When you connect two or more solar panels like this, it becomes a PV ...

### [PV String Design Explained: Series, Parallel & MPPT Matching](#)

PV string design means arranging solar panels in series and parallel combinations so their total voltage and current match the inverter's MPPT input range. It ensures your inverter operates ...



### [Solar Panel Series vs Parallel: Which is Better? .. Renogy US](#)

Solar panels wired in series are connected in a single string, with each panel's positive terminal linked to the next panel's negative terminal. This setup increases the system's total voltage while keeping the ...

### [Connecting Solar Panels in Series Vs Parallel](#)

Ultimately, for faster charging of the battery, it is better to connect the panels in series rather than parallel. Also, you must take proper safety measures to prevent any injuries or ...



### [Solar panel strings: Parallel & Series explained](#)

You typically put the most panels you can together in series (called a string); but not so many you exceed the voltage. You repeat that for as many panels as you have and then connect the ...



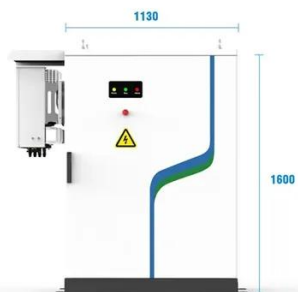
### [Series vs. Parallel Wiring & Shading Impact](#)

Series Wiring: When solar panels are connected in series, the current is the same across all panels, but the voltage adds up. In this configuration, if one panels is shaded, it can significantly reduce the ...



### [Understanding the series and parallel connection of solar panels](#)

Several panels are first wired together in series to form strings of panels (for instance, three strings of solar panels featuring two panels connected in series would make up a total of six ...



- PV / DG Application
- APP Intelligent Control
- Multi-Unit Parallel Expansion
- 98.8% Max. Efficiency

### [Series Vs Parallel Solar Panels: Wiring Guide & MPPT Tips , SolarTech](#)



In a series configuration, you connect the positive terminal of one panel to the negative terminal of the next panel, creating a chain. Here's the step-by-step process:



### [Solar Panels in Series vs. Parallel: 6 Difference and Which Is Better?](#)

In this article, we explore how to join solar panels, define series and parallel connections, compare their characteristics, and help you decide which option is best for your setup.

### [Series, Parallel & Series-Parallel Connection of PV Panels](#)

A solar cell arrangement is known as solar module or solar panel where solar panel arrangement is known as photovoltaic array. It is important to note that with the increase in series and parallel ...





## Contact Us

---

For catalog requests, pricing, or partnerships, please visit:

<https://www.iwap.com.pl>

Phone: +34 919 456 782

Email: [info@iwap.com.pl](mailto:info@iwap.com.pl)

Scan the QR code to access our WhatsApp.

