



Photovoltaic panels rental prices on farmland





Overview

The short answer is, “it depends,” but solar lease rates (also called “rents”) typically range from about \$450 to \$2,500 per acre, per year—though can go much, much higher. This article looks at the factors that influence the rates a solar developer may offer for your land. is intersecting with agriculture, and as farmland has become a key target for projects in the Midwest, it's creating some eye-popping offers. Escape will cancel and close the window. This article looks. Productive farmland in the Midwest can produce corn and soybeans worth \$1,000 an acre, but expenses including seed, fertilizer, pesticides, and equipment can dramatically reduce net revenue. Areas where land price is much lower, and the land doesn't offer much in the way of agriculture, may drop rent rates to around \$500 an acre.



Photovoltaic panels rental prices on farmland



[Common Offer to Lease Farmland for Solar Panels: ...](#)

More than half of large U.S. farmers say they have been offered at ...

[Common Offer to Lease Farmland for Solar Panels: \\$1,000 an Acre](#)

More than half of large U.S. farmers say they have been offered at least \$1,000 an acre during discussions about planting solar panels instead of crops on their land, said a Purdue ...



[How Much Do Solar Farms Pay to Lease Land?](#)

Landowners can typically earn about 7-8% of the market value of their land per year from leasing it to a solar farm. The exact amount depends on the specific lease terms, location, and ...

[How Much Do Solar Companies Pay to Lease Land? Solar Farm Rental ...](#)

Solar farm land rental rates often surpass traditional agricultural leasing rates. While farming lease rates are determined by soil quality and crop yields, solar rental rates are primarily influenced by location, ...



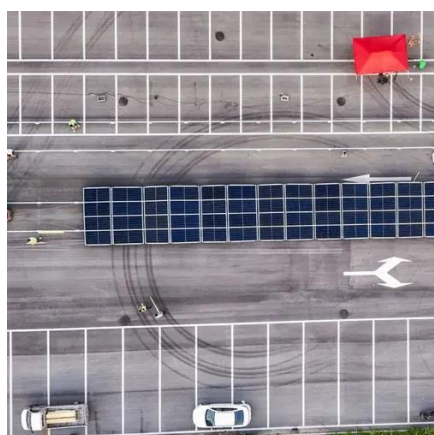
Solar Farm Land Lease Rates , YSG Solar

Of course, these are just rough estimates and, in reality, solar land lease rates vary widely depending on project size, location, land value, grid access, site supply & demand, and many other ...



[Solar Farm Lease Rates: What Is My Land Worth?](#)

Solar Farm Lease Rates generally fall between \$250 to \$2,000 per acre per year, depending on the land, market conditions, & grid connectivity.



[The Average Solar Farm Lease Rates Per Acre In 2024](#)

What Are Solar Farm Lease Rates Per acre?How to Calculate Solar Farm Income Per acre?What Factors Determining The Cost of The Lease Land For Solar Farms?What Is The Solar Farm Profit margin: Positive ROI?Types of Solar Farm LeasesTips on How to Choose A Solar CompanyFAQsConclusionFirst of all, we discuss what solar farm lease rates in the USA are. Are you considering leasing your land to a solar farm? If so, you may wonder about the lease rates. Solar farm lease rates per acre in the United States are



the starting point for anyone wishing to lease property for a solar farm in the country. Understanding the elements affecting See more on solarenergytip 5/5(4)Published: Mar 8, 2024

Videos of Photovoltaic Panels Rental Prices On Farmland

Watch video6:24How a Solar Farm is Constructed (What Landowners Can Expect) Going Solar with Pivot Energy11.9K viewsJan 29, 2025Watch video5:23Leasing Land for Solar Energy (Top Financial Benefits) Going Solar with Pivot Energy2K viewsSep 26, 2024Watch video11:48How to Lease Out Land for Solar Farms (MAX Income) Going Solar with Pivot Energy5.1K viewsJul 3, 2024Watch full videoSolarLandLease

Lease Rates for Solar Farms: How Valuable Is My Land?

The short answer is, "it depends," but solar lease rates (also called "rents") typically range from about \$450 to \$2,500 per acre, per year--though can go much, much higher. This article looks at the ...

[Solar Farm Land Lease Rates: Average Rent Per Acre](#)

Find how much solar companies pay to lease your land. Explore benefits, leasing rates, and what to expect when leasing your property for a solar farm.



[Lease Rates for Solar Farms: How Valuable Is My Land?](#)

The short answer is, "it depends," but solar lease rates (also called "rents") typically range from about \$450 to \$2,500 per acre, per year--though can go much, much higher. This article looks at the ...



[\\$4,500 Per Acre Plus a Signing Bonus? What Solar Companies Are](#)

Lower commodity prices, higher interest rates and the pain from inflation are all factors that are starting to eat into the overall farmland market.

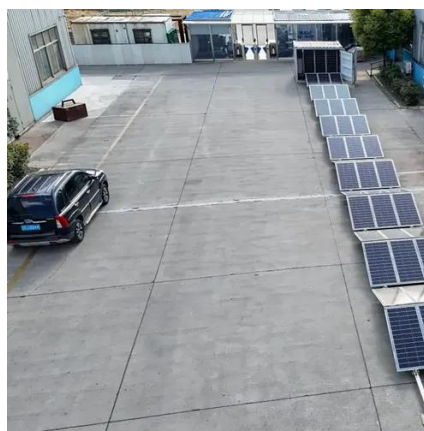


[How much does it cost to rent land to install solar energy](#)

Analysis suggests that average rental prices for land designated for solar installations typically range from \$200 to \$2,000 per acre annually, depending largely on geographically defined ...

[The Average Solar Farm Lease Rates Per Acre In 2024](#)

To find the best cost for your situation, compare solar farm rates. Your solar farm land lease rate per acre should be fair. Start searching for land after you know what elements could affect ...





Contact Us

For catalog requests, pricing, or partnerships, please visit:

<https://www.iwap.com.pl>

Phone: +34 919 456 782

Email: info@iwap.com.pl

Scan the QR code to access our WhatsApp.

