



Photovoltaic solar panel series wiring





Overview

In a series wiring setup, the solar panels are connected end-to-end. When panels are wired in series, their voltages add up, while the current remains the same as that of a single. Voltage Calculation is Critical for Safety: Series wiring adds voltages together, and temperature variations can push systems beyond safe limits. Always calculate maximum cold-weather voltage using temperature coefficients to ensure you stay within NEC's 600V limit for residential installations and. In this article, you will explore everything about wiring solar panels, from understanding the basic components to connection types and the tools required, to a step-by-step wiring guide and final testing. Let's get into further details. Series connections are ideal for larger home solar systems (4kW+) and long distances to the inverter, but they're vulnerable to shading issues since one. Even if you don't do any harm, a smart solar panel wiring plan will optimize performance and maximize the return on your investment.



Photovoltaic solar panel series wiring



[Solar Panel Wiring Guide: How to Connect Panels for Maximum ...](#)

There are mainly three different wiring configurations, which are series, parallel, and hybrid connections. This solar panel wiring guide explains different methods and includes practical ...

Solar Panel Wiring Guide 2025 , Series vs Parallel, Inverters & Safety

Learn everything about solar panel wiring in 2025 -- from series vs parallel connections to inverter compatibility, MPPTs, wire types, and safety rules.



[Solar Panel Wiring Basics: Wiring PV Panel In Series And Parallel](#)

In a series wiring setup, the solar panels are connected end-to-end. This means that the positive terminal of one panel is connected to the negative terminal of the next. When panels are ...

[How To Wire Solar Panels In Series: Complete Guide 2025](#)

Master series solar panel wiring with our step-by-step guide. Includes safety tips, tools, diagrams, and calculations for 2-4+ panel configurations.



[Solar Panel Wiring Guide: How to Connect Solar Panels](#)

Solar panel wiring guide covering how to connect solar panels in series or parallel for optimal solar panel connection and output.

[Solar Panel Wiring Guide 2025: How to Wire Solar Panels](#)

Learn how to wire solar panels in series or parallel with our expert solar panel wiring guide. Ideal for photovoltaic systems in home and commercial use.



[The Complete Guide to Solar Panel Wiring Diagrams](#)

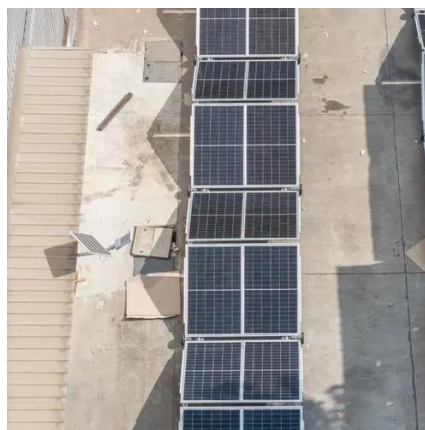
Read on to find out more about solar panel connection diagrams and how to wire PV modules to achieve the best performance based on your unique installation requirements.



[Solar Panel Wiring Basics: How to Wire Solar Panels](#)



Master solar panel wiring with this in-depth guide. Learn how to configure series and parallel connections, calculate voltage and current, and safely integrate inverters, charge controllers, and ...



[How to connect solar panels together: Series, parallel, combo](#)

Series connections are ideal for larger home solar systems (4kW+) and long distances to the inverter, but they're vulnerable to shading issues since one shaded panel affects the entire string.

[How To Wire Solar Panels In Series Vs. Parallel](#)

Solar panels wired in series increase the voltage, but the amperage remains the same. Solar inverters may have a minimum operating voltage, so wiring in series allows the system to reach that threshold.





Contact Us

For catalog requests, pricing, or partnerships, please visit:

<https://www.iwap.com.pl>

Phone: +34 919 456 782

Email: info@iwap.com.pl

Scan the QR code to access our WhatsApp.

